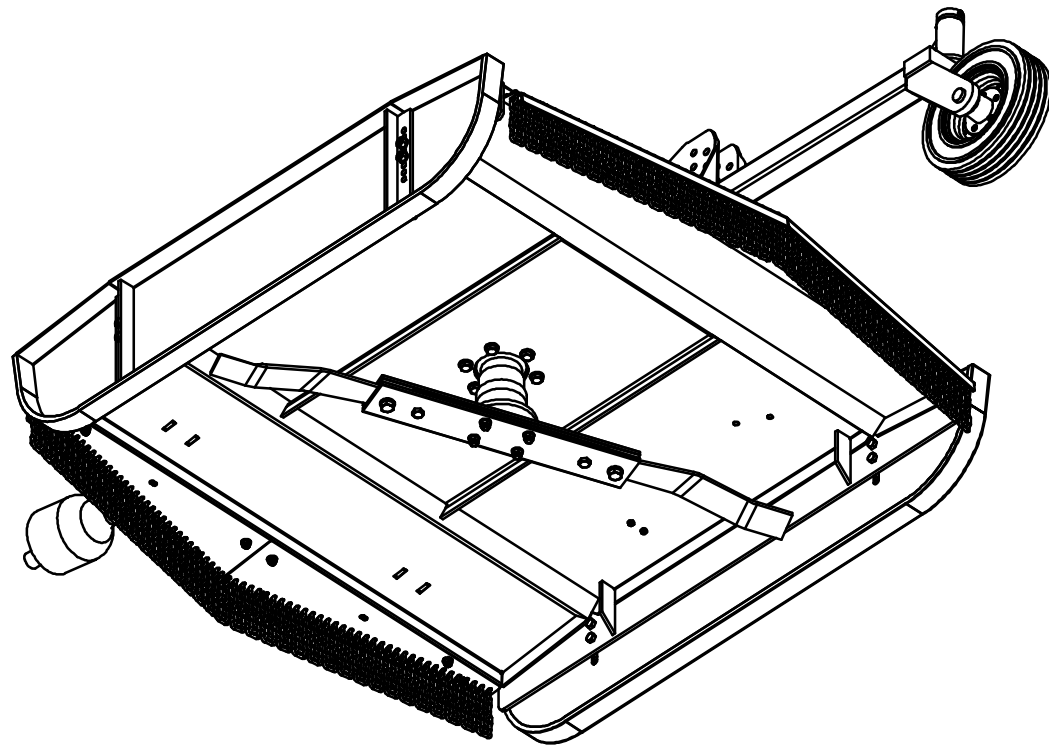


XHD-70 ROTARY SLASHER
ISOMETRIC VIEW



XHD-70 ROTARY SLASHER
UNDERSIDE VIEW

ITEM NO.	QTY.	PART NUMBER	DESCRIPTION	DRAWING NUMBER	WEIGHT IN kg	VENDOR	VENDOR PART No
1	1	XHD-70_100	X-TREME 70 SPECIAL SINGLE CASTOR DECK	RDT - 200	371.84		
2	2	04115-05	HIGH CLEARANCE SKID	04115-05	59.72		
3	1	HSM017	HEADSTOCK ARM LH	HSM - 17	10.41		
4	1	HSM018	HEADSTOCK ARM RH	HSM - 18	10.41		
5	1	RDT101	HEADSTOCK CHAIN BRACKET	RDT - 101	2.03		
6	2	LS70-CG-AS	70" SLASHER CHAIN GUARD ASSY	CHG - 10	11.56		
7	1	CLC100	CLUTCH COVER ASSEMBLY	CLC - 100	7.20		
8	1	FQ26105-26121	63" 23 SPLINE PTO SHAFT	Purchased	15.51	Bare Co	26105-26121
9	1	FQ7790	200HP CLUTCH	Purchased	7.31	Bare Co	7790
10	1	GBB8668	B8668 GEARBOX - 1:1.467	Purchased	76.88	BARE-CO	B8668
11	1	XTR100	BLADE HUB ASSY - 200HP	XTR - 100	9.29		
12	1	XTR70_800	MX70 BLADE ASSEMBLY	XTR70 - 800	34.16		
13	3	LPB81	HEADSTOCK PIVOT PIN	Purchased	0.60	Bare Co	B 81
14	8	LP10D	10mm LYNCH PIN	Purchased	0.05	Bare Co	TBA
15	2	HSM012	HEADSTOCK SPACER	HSM - 12	0.08		
16	2	LPB216	HEAVY DUTY PIN - 105	Purchased	0.70	Bare Co	B 216
17	8	HHB45M16	M16 x 45 HEX BOLT	Purchased	0.11	TBA	TBA
18	11	WF16M	M16 FLAT WASHER	Purchased	0.01	TBA	TBA
19	11	HNN16M	M16 NYLOC NUT	Purchased	0.01	TBA	TBA
20	10	HHB30M12	M12 x 30 HEX HEAD BOLT	Purchased	0.04	TBA	TBA
21	10	WF12M	M12 FLAT WASHER	Purchased	0.01	TBA	TBA
22	10	HNN12M	M12 NYLOC NUT	Purchased	0.02	TBA	TBA
23	4	XTR70-07	CHAIN LOCATING ROD	XTR - 07	0.45		
24	70	RDT_013	CHAIN - GUARD	LS80 - 23	0.44		
25	8	UCLP3_8	3/8 U-CLAMP	Purchased	0.09		
26	6	HHB3/4UNF-16T3	3/4UNF x 3 HEX BOLT	Purchased	0.23	MAPTCO	TBA
27	12	WF20MHT	M20 HIGH TENSILE FLAT WASHER	Purchased	0.02	TBA	TBA
28	6	HNN3/4UNF	3/4" UNF HEX NYLOC NUT	Purchased	0.07	MAPTCO	TBA
29	1	CNB1228	1 1/4 CASTLE NUT	Purchased	0.37	Bare Co	B1228
30	1	SP 6.0 x 50	6.0 x 50 SPLIT PIN	Purchased	0.01	TBA	TBA
31	3	HHB110M16	M16 x 110 HEX BOLT	Purchased	0.22	TBA	TBA
32	4	WF16MHT	M16 HIGH TENSILE FLAT WASHER	Purchased	0.01	TBA	TBA
33	2	XHD-70_10	SUPPORT CHAIN	HSN - 11	2.75		
34	4	DSHC13	13mm D-Shackle	Purchased	0.23	TBA	TBA
35	1	ENC001	DOCUMENT HOLDER	Purchased	3.59	Bare Co	B1970
36	3	HHB25M8	M8 x 25 HEX BOLT	Purchased	0.02	TBA	TBA
37	3	WF8M	M6 FLAT WASHER	Purchased	0.00	TBA	TBA
38	4	HNN8M	M8 NYLOC NUT	Purchased	0.00	TBA	TBA
39	1	XHD-70_200	CASTOR WHEEL ARM	XTR - 101	19.87		
40	1	XTR201	RH CASTOR ASSEMBLY	XTR - 201	19.62		
41	1	CSTW001	CASTOR WHEEL ASSEMBLY	Purchased	12.45	TBA	TBA
42	1	FWM0141	ADJUSTER DISC	FWM - 141	0.49		
43	1	HHB90M8	M8 x 90 HEX BOLT	Purchased	0.04	TBA	TBA
44	4	HHB75M16-1.5	M16-1.5 x 90 HEX BOLT	Purchased	0.16	MAPTCO	TBA
45	4	HNN16M-1.5	M16-1.5 HEX NYLOC NUT	Purchased	0.04	MAPTCO	TBA
46	1	GN1/4STR	1/4BSP STRAIGHT GREASE NIPPLE	Purchased	0.01	TBA	TBA
47	3	LPB77	PIVOT PIN	Purchased	0.35	Bare Co	B 74
48	2	04115-05_02	SKID FOOT	04115-05	18.78		

DO NOT SCALE
IF IN DOUBT - ASK WEIGHT 831408.9 GMS

No.	Description	DWN	CHK	APPD	DATE
P1	PRELIMINARY DRAWING	-	-	-	-
A	APPROVED FOR CONSTRUCTION	-	-	-	-

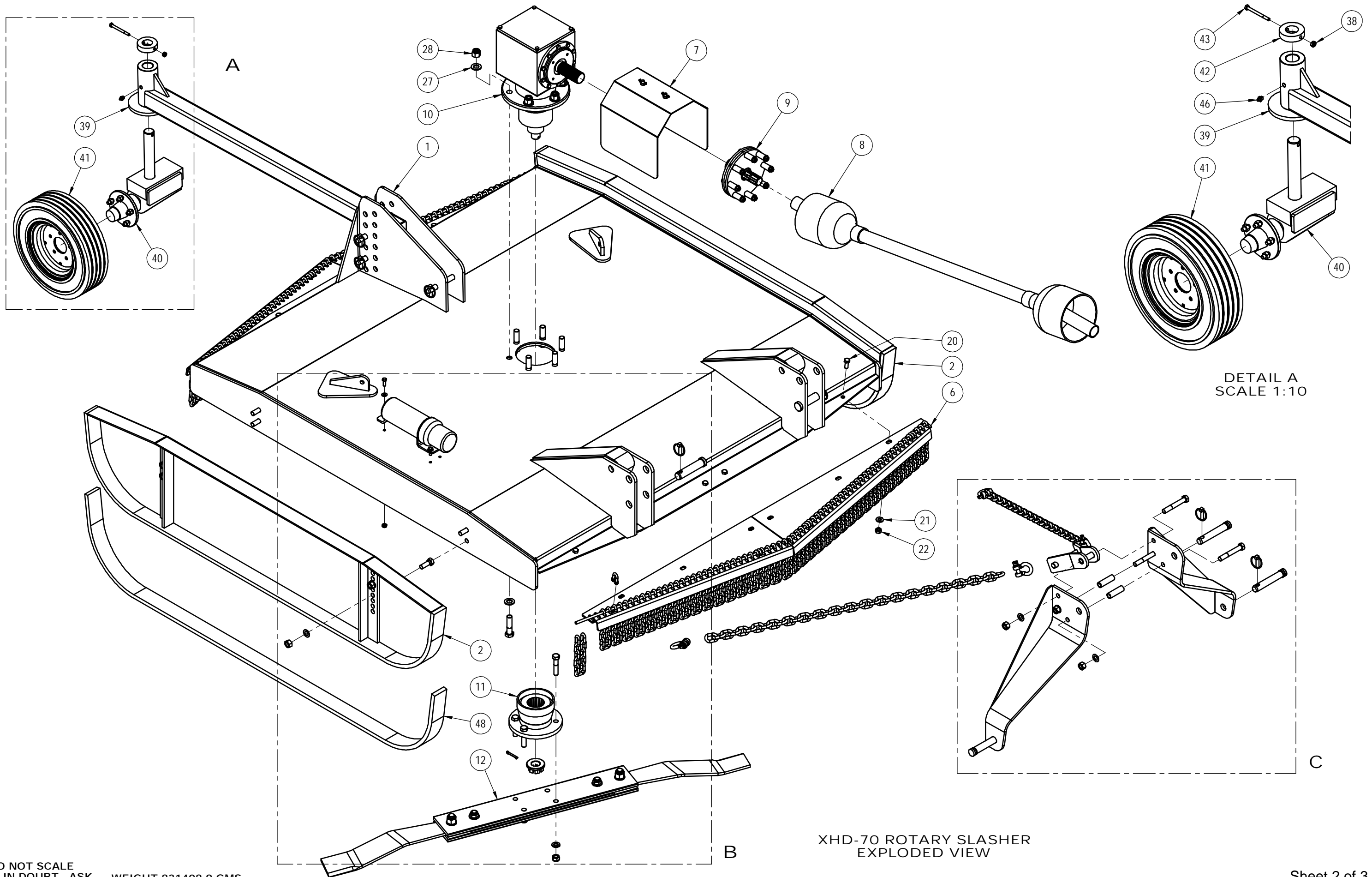
199 Bridge Street, Oakey, Qld, 4401

THIS DRAWING IS PRIVATE AND CONFIDENTIAL AND REMAINS THE PROPERTY OF FIELDQUIP.
RETURNED UPON REQUEST. IT MUST NOT BE COPIED OR LOANED WITHOUT THE CONSENT OF FIELDQUIP.

SCALE	1:20	U.N.O
Design	D.M.	01.08.12
Drawn	J.T.	01.08.12
Check	AWP	
Appd.	D.M.	

XHD-70 ROTARY SLASHER	
XHD SERIES	

3rd ANGLE PROJECTION U.N.O.	A3
Fieldquip Drawing Number	REV
XHD70_900	B



XHD-70 ROTARY SLASHER
EXPLODED VIEW

DO NOT SCALE
IF IN DOUBT - ASK WEIGHT 831408.9 GMS

Sheet 2 of 3

No.	Description	DWN	CHK	APPD	DATE
P1	PRELIMINARY DRAWING	-	-	-	-
A	APPROVED FOR CONSTRUCTION	-	-	-	-

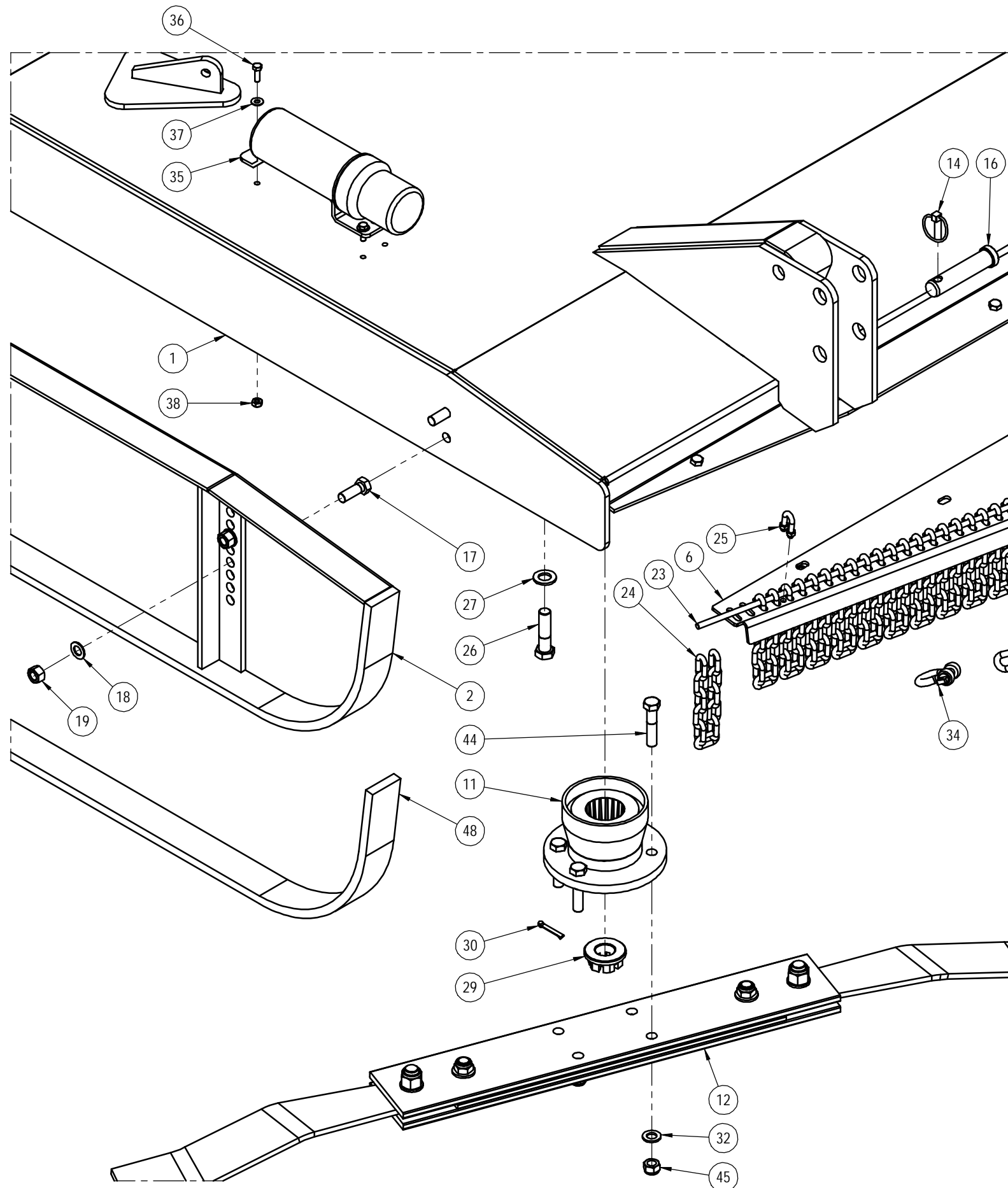
199 Bridge Street, Oakey, Qld, 4401

THIS DRAWING IS PRIVATE AND CONFIDENTIAL AND REMAINS THE PROPERTY OF FIELDQUIP.
RETURNED UPON REQUEST. IT MUST NOT BE COPIED OR LOANED WITHOUT THE CONSENT OF FIELDQUIP.

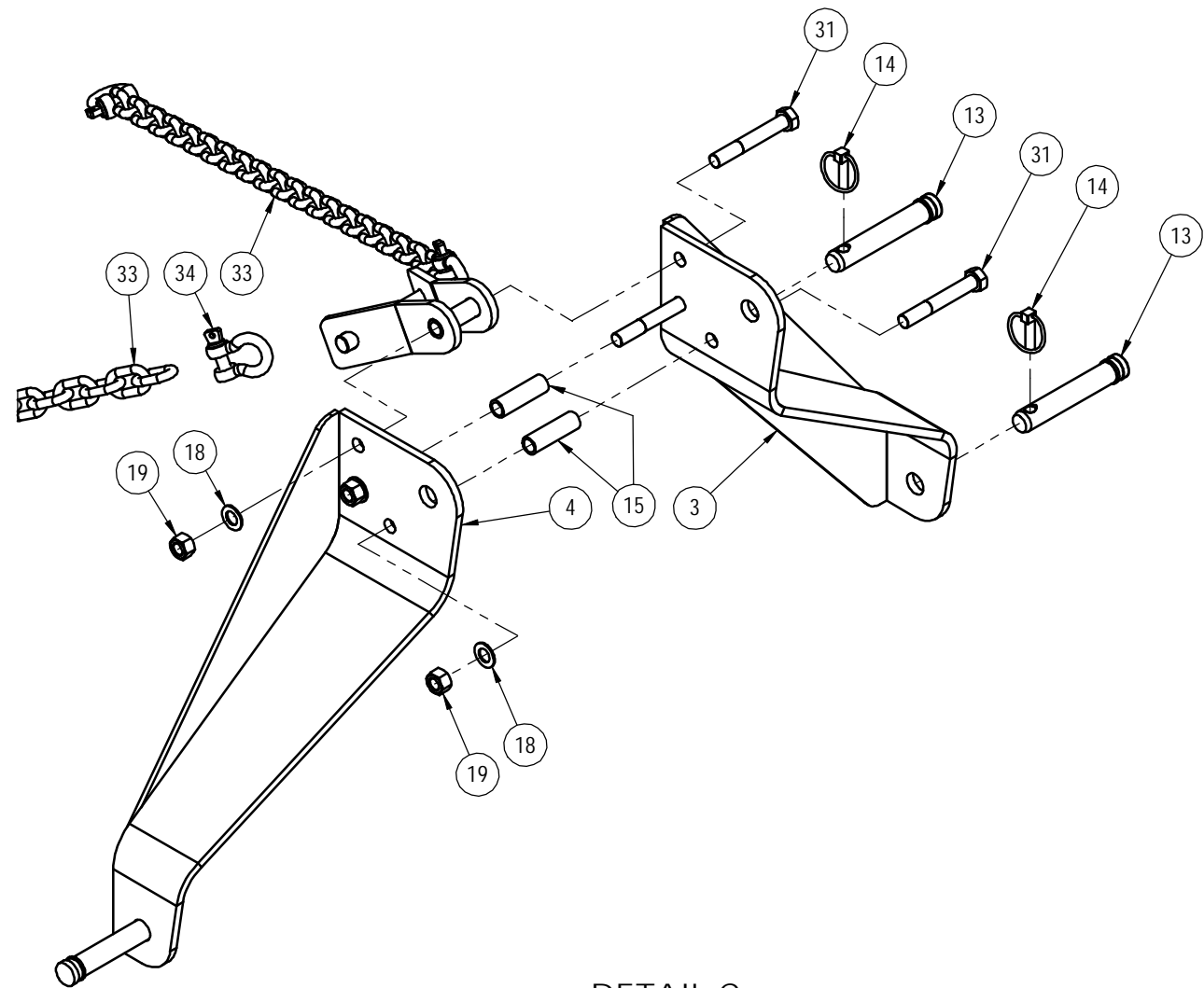
SCALE	1:12.5 U.N.O	
Design	D.M.	01.08.12
Drawn	J.T.	01.08.12
Check	AWP	
Appd.	D.M.	

XHD-70 ROTARY SLASHER
XHD SERIES

3rd ANGLE PROJECTION U.N.O.	A3
Fieldquip Drawing Number	REV
XHD70_900	B



DETAIL B



DETAIL C

DO NOT SCALE
IF IN DOUBT - ASK WEIGHT 831408.9 GMS

No.	Description	DWN	CHK	APPD	DATE
P1	PRELIMINARY DRAWING	-	-	-	-
A	APPROVED FOR CONSTRUCTION	-	-	-	-

199 Bridge Street, Oakey, Qld, 4401

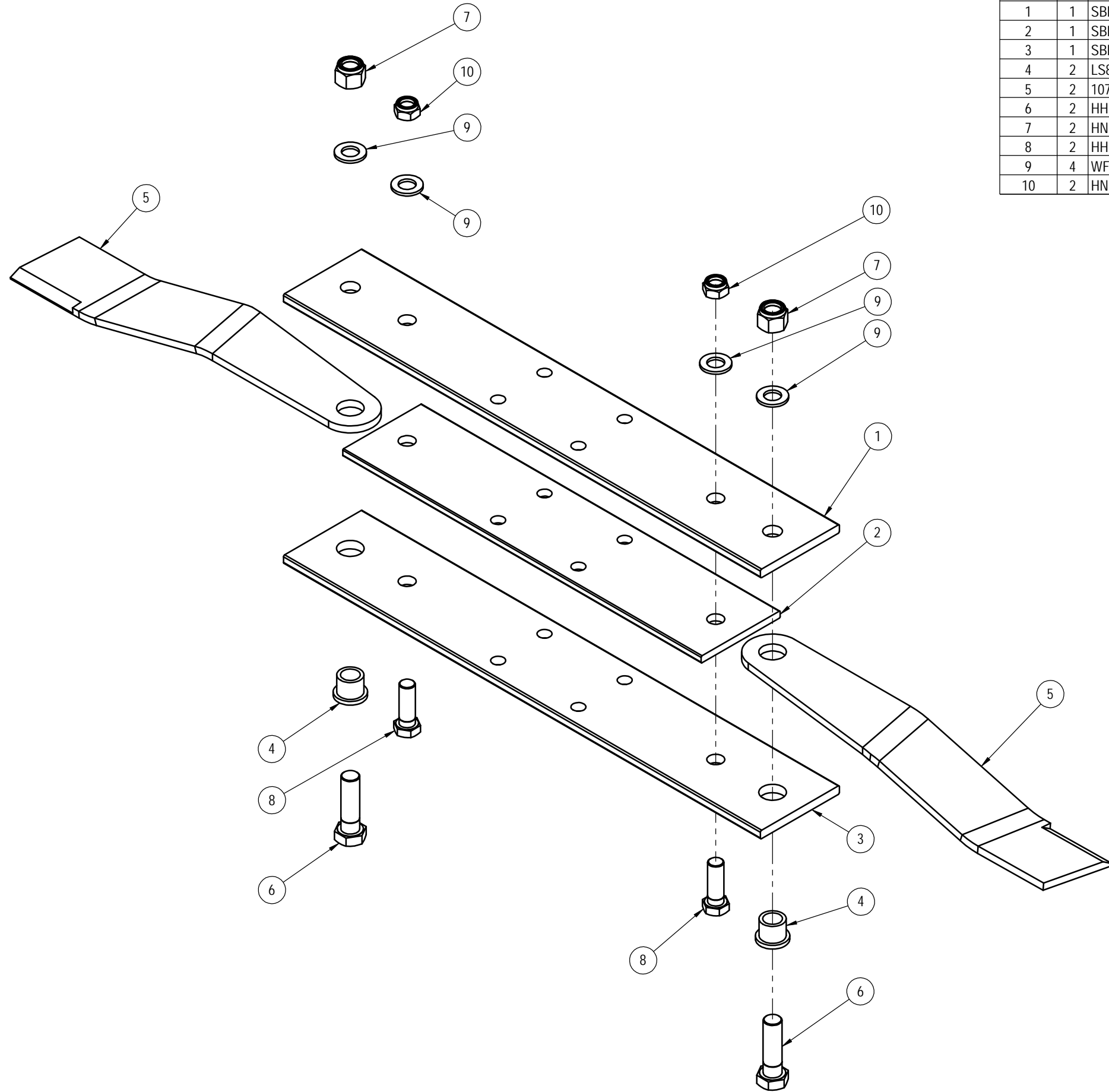
THIS DRAWING IS PRIVATE AND CONFIDENTIAL AND REMAINS THE PROPERTY OF FIELDQUIP.
RETURNED UPON REQUEST. IT MUST NOT BE COPIED OR LOANED WITHOUT THE CONSENT OF FIELDQUIP.

SCALE	1:7.5	U.N.O
Design	D.M.	01.08.12
Drawn	J.T.	01.08.12
Check	AWP	
Appd.	D.M.	

XHD-70 ROTARY SLASHER
XHD SERIES

3rd ANGLE PROJECTION U.N.O.	A3
Fieldquip Drawing Number	REV
XHD70_900	B

ITEM NO.	QTY.	PART NUMBER	DESCRIPTION	DRAWING NUMBER	WEIGHT IN kg	VENDOR	VENDOR PART No
1	1	SBH422	BEAM 130x12x785	SBH 422	9.42		
2	1	SBH423	BEAM 130x10x590	SBH 423	5.92		
3	1	SBH421	BEAM 130x12x785	SBH 421	9.34		
4	2	LS80_20	BLADE BUSH	LS80 - 20	0.11		
5	2	1074L	SLASHER BLADE	Purchased	3.93	TBA	TBA
6	2	HHB7_8UNF-14T3	7/8UNF x 3 HEX BOLT	Purchased	0.33	MAPTCO	TBA
7	2	HNN7_8UNF	7/8" UNF HEX NYLOC NUT	Purchased	0.10	MAPTCO	TBA
8	2	HHB3/4UNF-16T21/4	3/4UNF x 21/4 HEX BOLT	Purchased	0.19	MAPTCO	TBA
9	4	WF20MHT	M20 HIGH TENSILE FLAT WASHER	Purchased	0.02	TBA	TBA
10	2	HNN3/4UNF_T	3/4" UNF HEX THIN NYLOC NUT	Purchased	0.05	MAPTCO	TBA



DO NOT SCALE
IF IN DOUBT - ASK WEIGHT 34170.3 GMS

Sheet 1 of 1

No.	Description	DWN	CHK	APPD	DATE
P1	PRELIMINARY DRAWING	-	-	-	-
A	APPROVED FOR CONSTRUCTION	-	-	-	-

199 Bridge Street, Oakey, Qld, 4401

FIELDQUIP *...smarter gear ...smarter care*
Australian owned family business

THIS DRAWING IS PRIVATE AND CONFIDENTIAL AND REMAINS THE PROPERTY OF FIELDQUIP.
RETURNED UPON REQUEST. IT MUST NOT BE COPIED OR LOANED WITHOUT THE CONSENT OF FIELDQUIP.

SCALE	1:5	U.N.O
Design	D.M.	2009
Drawn	AWP	03.06.11
Check	D.M.	03.06.11
Appd.	D.M.	03.06.11

MX70 BLADE ASSEMBLY

X-TREME 70 SLASHER SERIES

3rd ANGLE PROJECTION U.N.O.	A3
Fieldquip Drawing Number	REV
XTR70 - 800	A