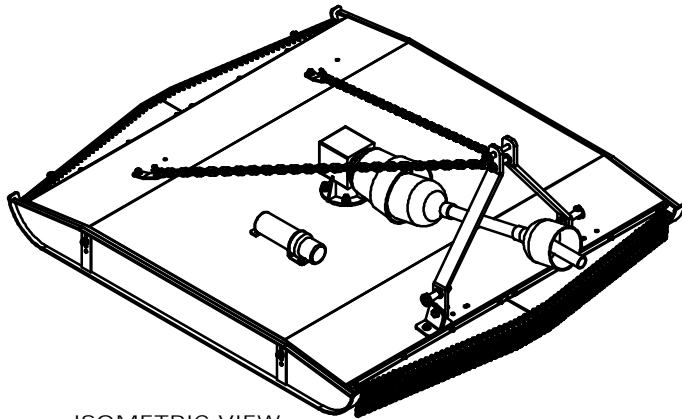
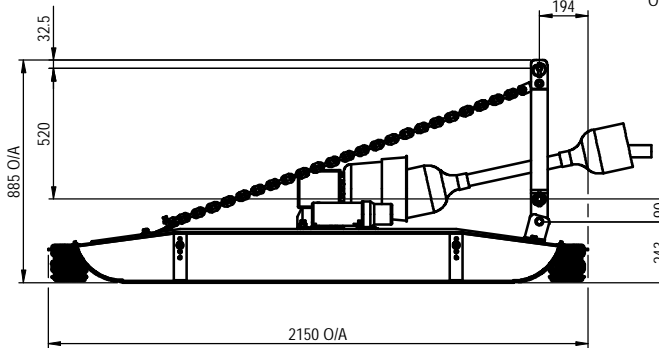


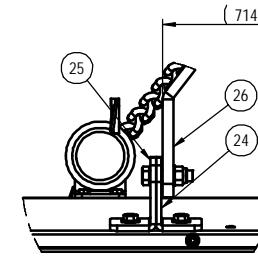
ITEM NO.	QTY.	PART NUMBER	DESCRIPTION	DRAWING NUMBER	WEIGHT IN kg	VENDOR	VENDOR PART No	ITEM NO.	QTY.	PART NUMBER	DESCRIPTION	DRAWING NUMBER	WEIGHT IN kg	VENDOR	VENDOR PART No
1	1	SBR18-205	SABRE 1800 DECK ASSEMBLY	SBR18 - 205	157.96			31	1	SBR12-009	HEADSTOCK SPACER	SBR12 - 09	0.07		
2	2	SBR18-201	1800 SKID ASSEMBLY	SBR18 - 201	22.07			32	4	HHB115M16	M16 x 115 HEX BOLT	Purchased	#VALUE!	TBA	TBA
3	1	ENC001	DOCUMENT HOLDER	Purchased	0.64	Bare Co	B1970	33	2	HHB60M16	M16 x 60 HEX BOLT	Purchased	#VALUE!	TBA	TBA
4	1	GBB9266	50 HP GEARBOX - 1.93:1	Purchased	17.64	Bare Co	B9266	34	2	SBR12-014	HEADSTOCK RETAINER PLATE	SBR12 - 14	#VALUE!		
5	1	COV002	6" PTO GUARD	Purchased	4.68	Bare Co	AS8209	35	4	HHB40M12	M12 x 40 HEX HEAD BOLT	Purchased	0.05	TBA	TBA
6	1	SBR18-800	1800 BLADE ASSEMBLY	SBR18 - 800	33.01			36	2	SBR12-016	CHAIN - HEADSTOCK TAB	SBR12 - 16	0.15		
7	4	FOB3605	60HP CLUTCH	Purchased	4.67	Bare Co	B3605	37	4	DSHC10	10mm D Shackle	Purchased	#VALUE!	TBA	TBA
8	1	PTO003	43" 6 SPLINE PTO SHAFT - SERIES 4	Purchased	13.72	Bare Co	AB4075	38	2	SBR18-007	HEADSTOCK RETAINER CHAIN	SBR18 - 07	3.25		
9	19	HHB25M8	M8 x 25 HEX BOLT	Purchased	0.02	TBA	TBA	39	2	SBR18-017	CHAIN ANCHOR TAB	SBR18 - 17	0.23		
10	27	HNN8M	M8 NYLOC NUT	Purchased	0.01	TBA	TBA	40	2	SBR18-008	CHAIN SUPPORT BRACKET RH	SBR18 - 08	4.34		
11	35	WF8M	M8 FLAT WASHER	Purchased	0.00	TBA	TBA	41	68	SBR12-019	GUARD CHAIN - 9 LINK	SBR12 - 19	0.35		
12	4	HHB50M16	M16 x 50 HEX BOLT	Purchased	0.12	TBA	TBA	42	6	UCLP3-8	3/8 U-CLAMP	Purchased	#VALUE!		
13	7	HNN16M	M16 NYLOC NUT	Purchased	0.04	TBA	TBA	43	4	SBR18-010	CHAIN LOCATING ROD SIDE	SBR18 - 10	#VALUE!		
14	18	WF16M	M16 FLAT WASHER	Purchased	0.01	TBA	TBA	44	2	SBR12-020	CHAIN LOCATING ROD CENTRE	SBR12 - 20	#VALUE!		
15	6	HHB35M12	M12 x 35 HEX HEAD BOLT	Purchased	0.05	TBA	TBA	45	2	SBR18-009	CHAIN SUPPORT BRACKET LH	SBR18 - 09	4.34		
16	10	HNN12M	M12 NYLOC NUT	Purchased	0.02	TBA	TBA	46	4	WSQ12M	M12 SQUARE WASHER	Purchased	0.05	TBA	TBA
17	12	WF12M	M12 FLAT WASHER	Purchased	0.01	TBA	TBA	47	1	TLPS03	TOP LINK PIN LONG	Purchased	0.34	Bare Co	B77
18	8	SW12	M12 SPRING WASHER ZN PL	Purchased	0.01	TBA	TBA	48	2	SBR18-012	HEADSTOCK SIDE ARM	SBR18 - 12	6.20		
19	4	HHB5_16UNC-18T1/2	5/16" UNC x 1/2" HEX HEAD BOLT	Purchased	0.01	MAPTCO	TBA	49	1	HHB120M16	M16 x 115 HEX BOLT	Purchased	0.23	TBA	TBA
20	4	TLPS04	TOP LINK PIN SHORT	Purchased	#VALUE!	Bare Co	B75	50	2	HHB65M16	M16 x 65 HEX BOLT	Purchased	0.14	TBA	TBA
21	2	22DLP	LIFT PIN	Purchased	#VALUE!	Bare Co	B198	51	4	DSHC08	8mm D-Shackle	Purchased	0.14	TBA	TBA
22	2	22DLPSW	M16 SP WASHER ZN PL	Purchased	#VALUE!	TBA	TBA	52	2	28DLPAS	LIFT PIN ASSEMBLY	Purchased	0.67	Bare Co	B202
23	2	22DLPN	M16 HEX HEAD NUT	Purchased	#VALUE!	TBA	TBA	53	2	SBR18-026	2.1 WIRE ROPE RETAINER	SBR18 - 26	0.49		
24	3	LP10D	10mm LYNCH PIN	Purchased	0.05	Bare Co	B6	54	4	UCLP8mm	8mm U-CLAMP	Purchased	0.08	TBA	TBA
25	1	GB005_2	CASTLE NUT - GEARBOX	Purchased	0.23	Bare Co	B2665	56	1	FOB7230	40HP CLUTCH	Purchased	4.48	Bare Co	B7230
26	1	SP 4.0 x 35	4.0 x 35 SPLIT PIN	Purchased	0.00	TBA	TBA								
27	2	SBR12-010	HEADSTOCK MOUNT BRKT - RH	SBR12 - 10	0.77										
28	2	SBR12-011	HEADSTOCK MOUNT BRKT - LH	SBR12 - 11	0.77										
29	2	SBR12-013	HEADSTOCK SWIVEL BUSH	SBR12 - 13	#VALUE!										
30	2	SBR12-012	HEADSTOCK SIDE ARM	SBR12 - 12	#VALUE!										



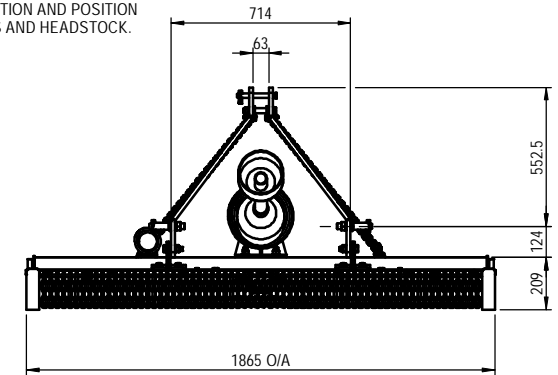
ISOMETRIC VIEW



SIDE VIEW



DETAIL C (1 : 7.5)  
NOTE ORIENTATION AND POSITION OF BRACKETS AND HEADSTOCK.



FRONT VIEW

DO NOT SCALE  
IF IN DOUBT - ASK WEIGHT 347477.5 GMS

No.	Description	DWN	CHK	APPD	DATE
PT	PRELIMINARY DRAWING	-	-	-	-
A	APPROVED FOR CONSTRUCTION	-	-	-	-
B	SIDE ARM MATERIAL THICKNESS CHANGED	AWP	D.M.	D.M.	27.07.15
C	FASTENERS AND PARTS UPDATE	MG	AWP	G.R.	22.03.16
D	ITEM UPDATES AND MODIFICATIONS	AWP	K.G.	K.G.	22.08.16

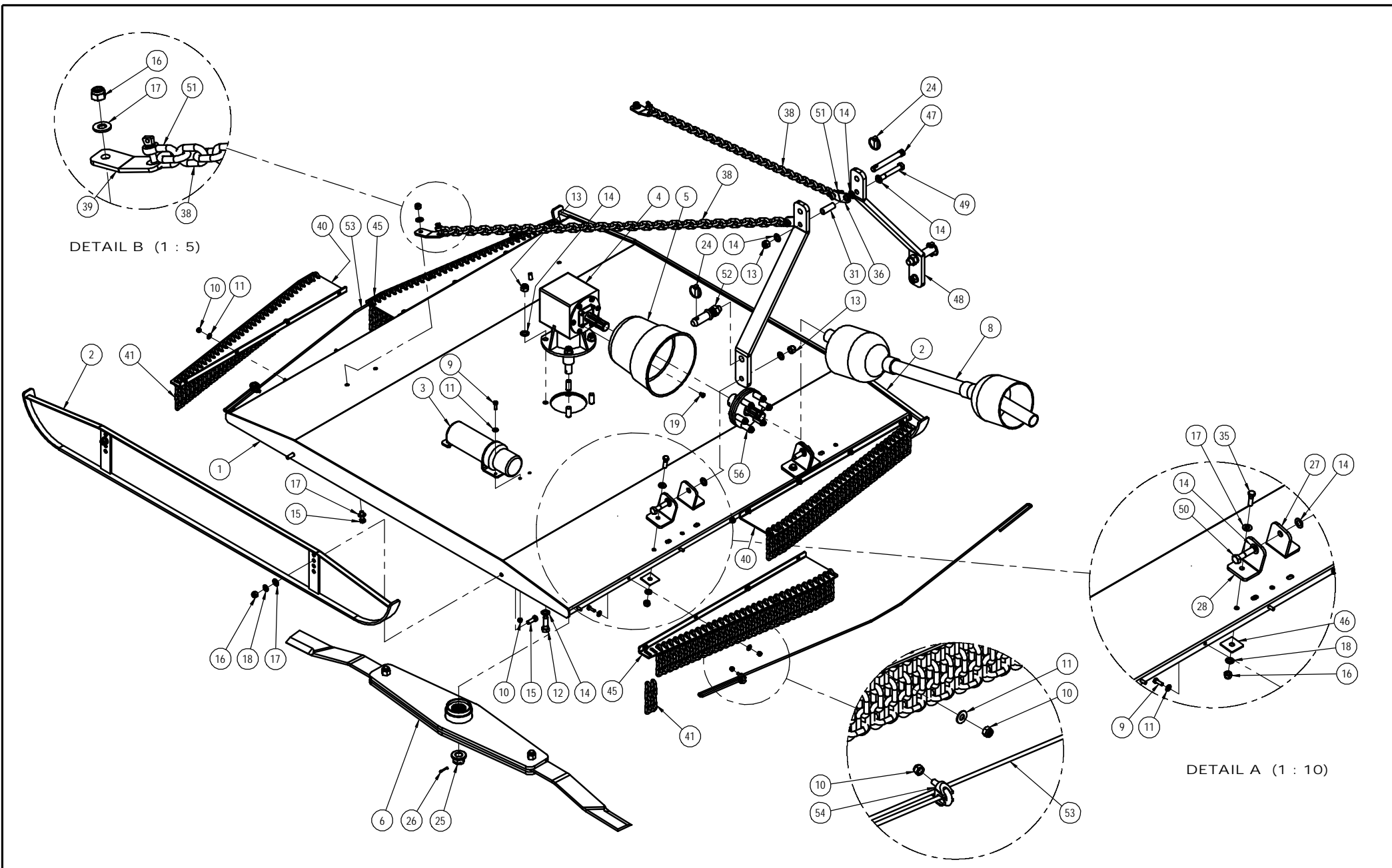


SCALE	1:20	U.N.O
Design	AWP	Jan 14
Drawn	AWP	09.01.14
Check	D.M.	15.01.14
Appd.	D.M.	15.01.14

SABRE 1800 ROTARY SLASHER

1800 SABRE SLASHER

3rd ANGLE PROJECTION U.N.O.	A3
Fieldquip Drawing Number	REV
SBR18 - 500	D



DETAIL B (1 : 5)

DETAIL A (1 : 10)

DETAIL D (1 : 5)

DO NOT SCALE  
IF IN DOUBT - ASK WEIGHT 347477.5 GMS

199 Bridge Street, Oakay, Qld, 4401

Sheet 2 of 2

No.	Description	DWN	CHK	APPD	DATE
P1	PRELIMINARY DRAWING	-	-	-	-
A	APPROVED FOR CONSTRUCTION	-	-	-	-
B	SIDE ARM MATERIAL THICKNESS CHANGED	AWP	D.M.	D.M.	27.07.15
C	FASTENERS AND PARTS UPDATE	MG	AWP	G.R.	22.03.16
D	ITEM UPDATES AND MODIFICATIONS	AWP	K.G.	K.G.	22.08.16

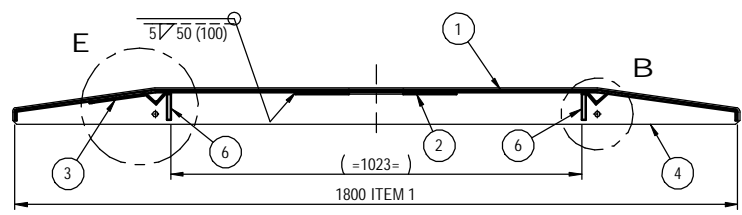
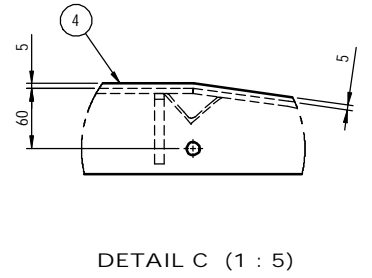
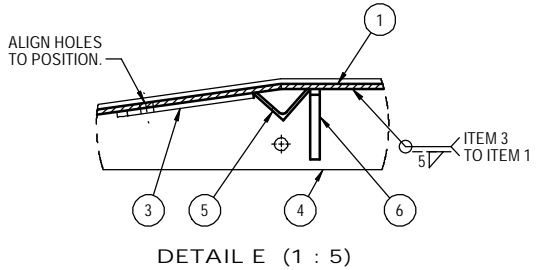
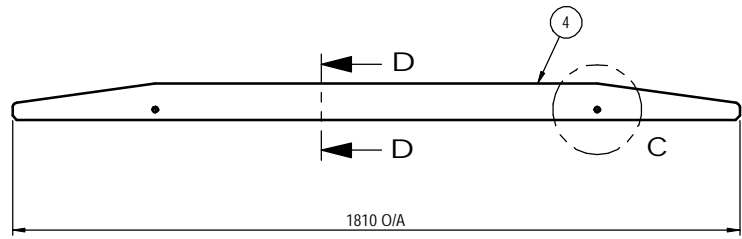
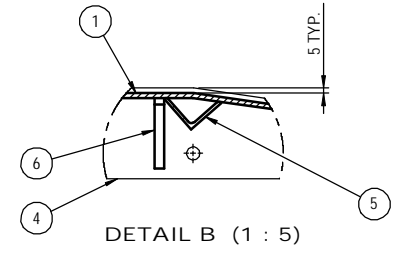
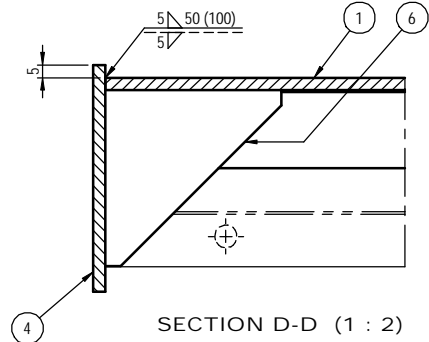
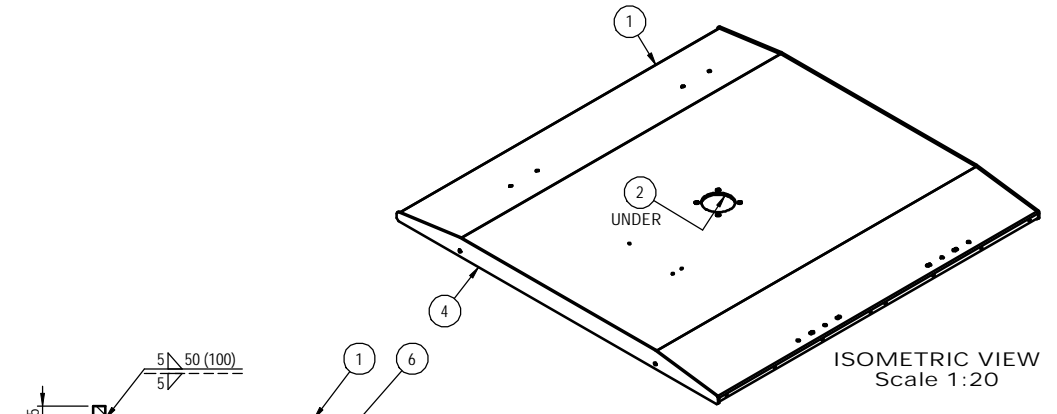
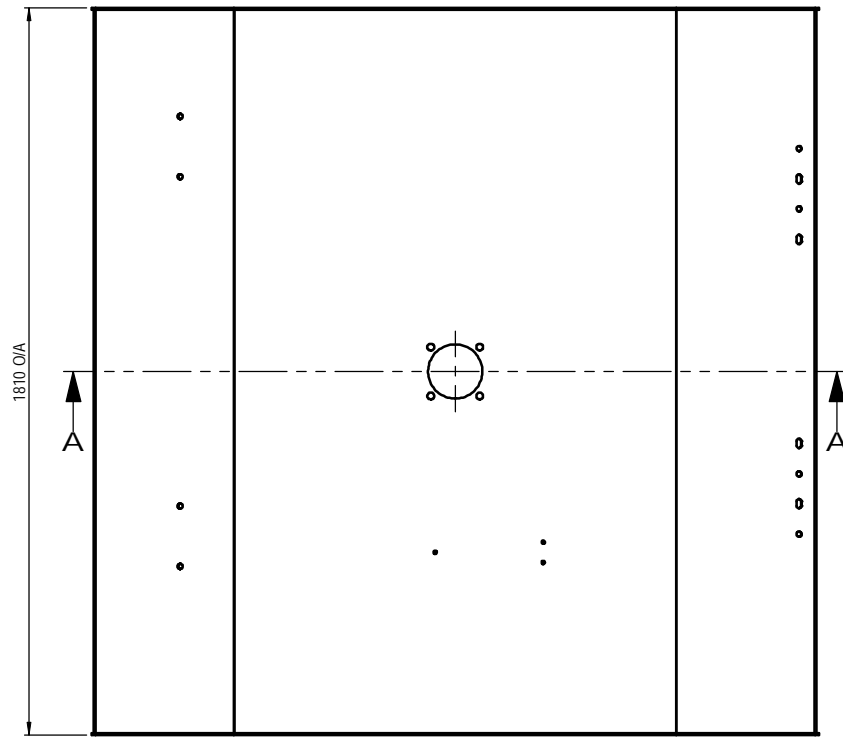
THIS DRAWING IS PRIVATE AND CONFIDENTIAL AND REMAINS THE PROPERTY OF FIELDQUIP. RETURNED UPON REQUEST. IT MUST NOT BE COPIED OR LOANED WITHOUT THE CONSENT OF FIELDQUIP.

SCALE	1:12.5	U.N.O
Design	AWP	Jan 14
Drawn	AWP	09.01.14
Check	D.M.	15.01.14
Appd.	D.M.	15.01.14

SABRE 1800 ROTARY SLASHER  
  
1800 SABRE SLASHER

3rd ANGLE PROJECTION U.N.O.	A3
Fieldquip Drawing Number	REV
SBR18 - 500	D

ITEM NO.	QTY.	PART NUMBER	DRAWING NUMBER	WEIGHT IN kg	DESCRIPTION
1	1	SBR18-025	SBR18 - 25	130.6	1800 DECK PRESSING
2	1	SBR12-002	SBR12 - 02	5.7	GEARBOX MOUNT PLATE
3	2	SBR18-002	SBR18 - 02	1.3	CHAIN ANCHOR STIFFENER PLATE
4	2	SBR18-023	SBR18 - 23	5.7	1800 DECK SIDE PLATE
5	2	SBR18-027	SBR18 - 27	3.3	UNDER DECK STIFFENER
6	4	XLS60-005	XLS60 - 05	0.2	GUSSET PLATE



DO NOT SCALE  
IF IN DOUBT - ASK WEIGHT 157958.4 GMS

No.	Description	DWN	CHK	APPD	DATE
P1	PRELIMINARY DRAWING	-	-	-	-
A	APPROVED FOR CONSTRUCTION	-	-	-	-
B	ADDED ANGLE STIFFENER AND GUSSET	MG	AWP	G.R.	22.03.16
C	DETAIL ADDED TO CLARIFY	AWP	K.G.	K.G.	22.08.16

199 Bridge Street, Oakley, Qld, 4401

THIS DRAWING IS PRIVATE AND CONFIDENTIAL AND REMAINS THE PROPERTY OF FIELDQUIP. RETURNED UPON REQUEST. IT MUST NOT BE COPIED OR LOANED WITHOUT THE CONSENT OF FIELDQUIP.

SCALE	1:12.5	U.N.O
Design	AWP	Jan 14
Drawn	AWP	15.03.14
Check	D.M.	18.03.14
Appd.	D.M.	18.03.14

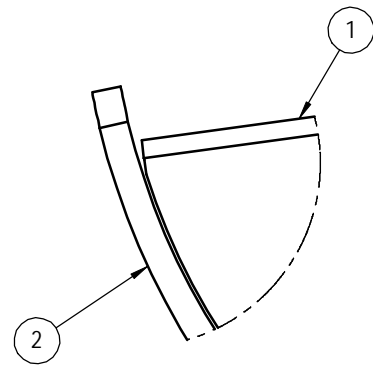
SABRE 1800 DECK ASSEMBLY

1800 SABRE SLASHER

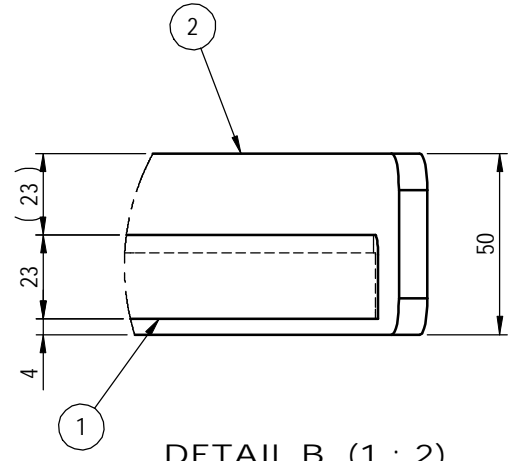
3rd ANGLE PROJECTION U.N.O.	A3
Fieldquip Drawing Number	REV
SBR18 - 205	C

ITEM NO.	QTY.	PART NUMBER	DRAWING NUMBER	WEIGHT IN kg	DESCRIPTION
1	1	SBR18-005	SBR18 - 05	8.8	SKID SIDE PLATE
2	1	SBR18-006	SBR18 - 06	6.6	SKID WEAR PLATE
3	2	SBR12-007	SBR12 - 07	0.4	SKID STIFFENER PLATE

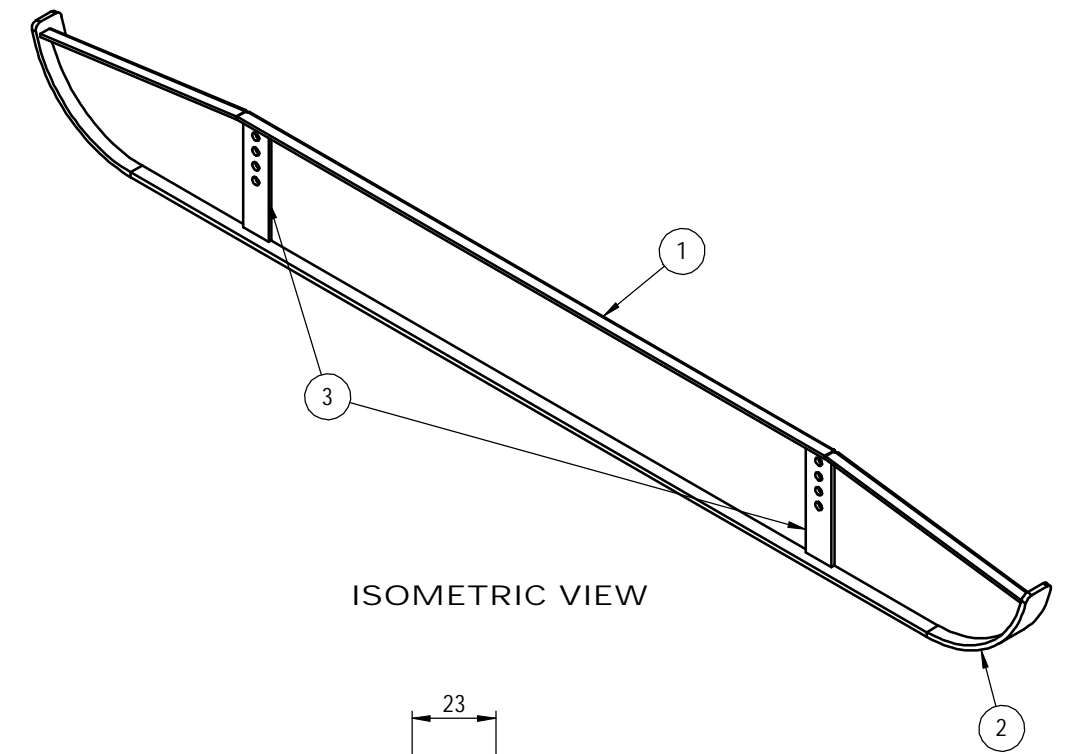
ALL WELDS 5mm CFW UNO



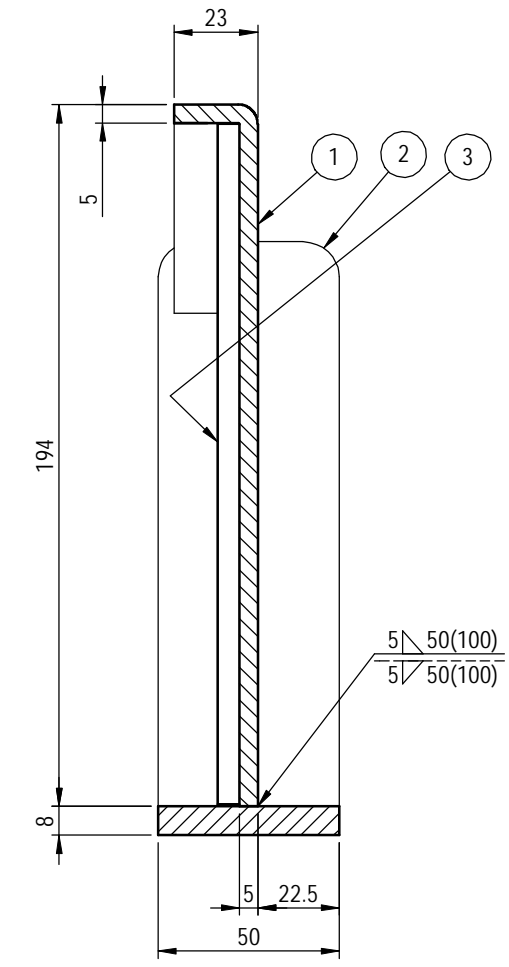
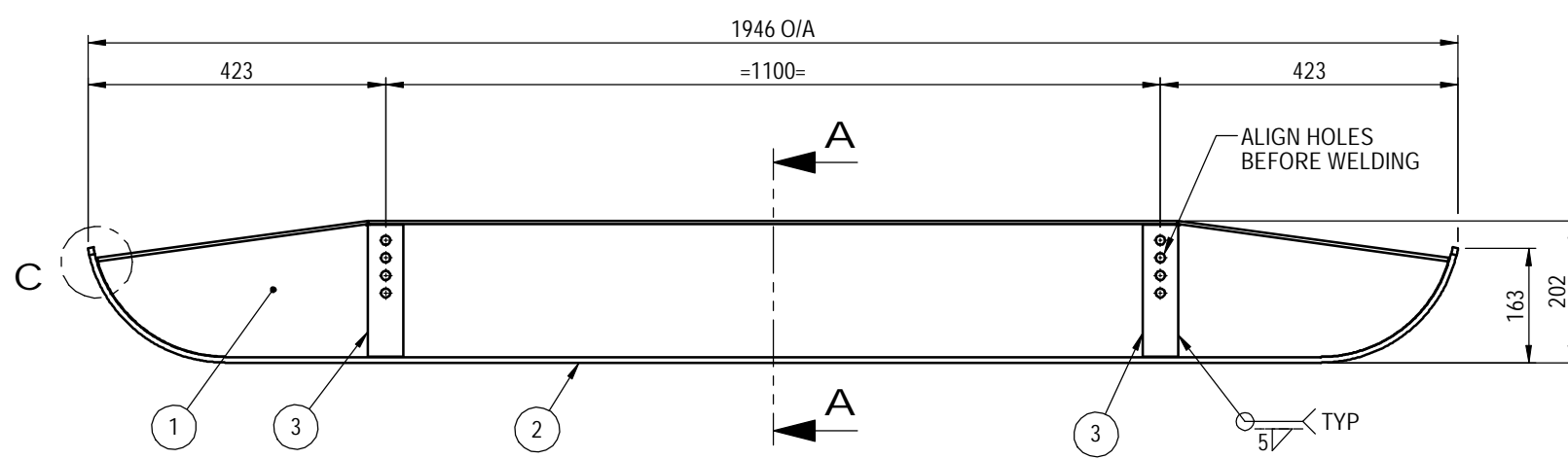
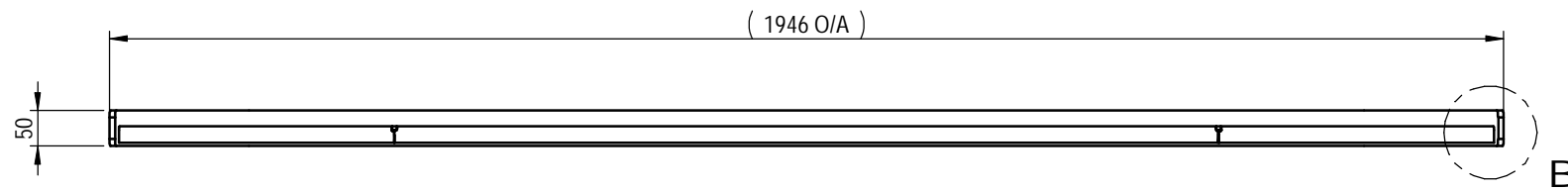
DETAIL C (1 : 2)



DETAIL B (1 : 2)



ISOMETRIC VIEW



SECTION A-A (1 : 2)

DO NOT SCALE  
IF IN DOUBT - ASK WEIGHT 22066.0 GMS

Sheet 1 of 1

No.	Description	DWN	CHK	APPD	DATE
P1	PRELIMINARY DRAWING	-	-	-	-
A	APPROVED FOR CONSTRUCTION	-	-	-	-
B	ITEM 1 - MATERIAL THICKNESS INCREASED	AWP	D.M.	D.M.	11.07.14

199 Bridge Street, Oakey, Qld, 4401

THIS DRAWING IS PRIVATE AND CONFIDENTIAL AND REMAINS THE PROPERTY OF FIELDQUIP.  
RETURNED UPON REQUEST. IT MUST NOT BE COPIED OR LOANED WITHOUT THE CONSENT OF FIELDQUIP.

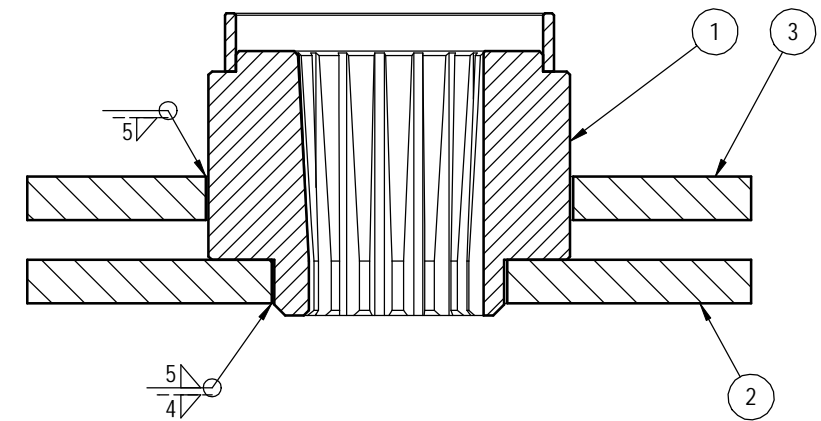
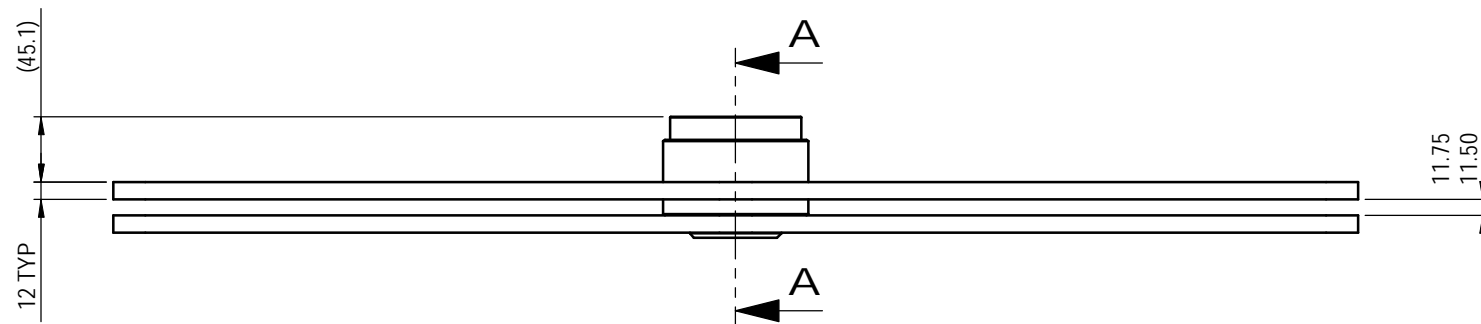
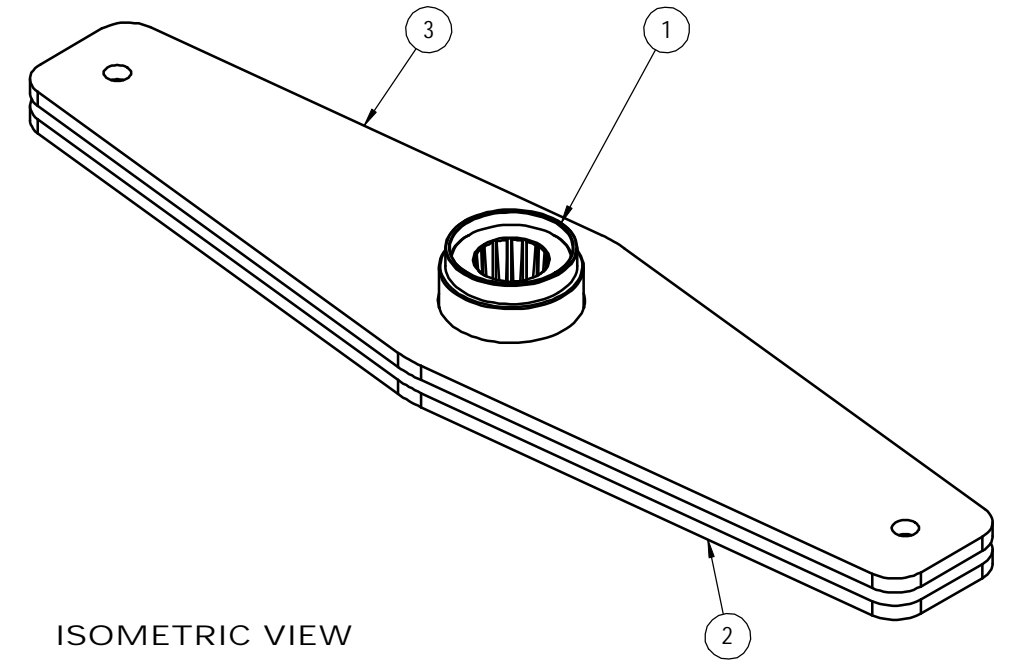
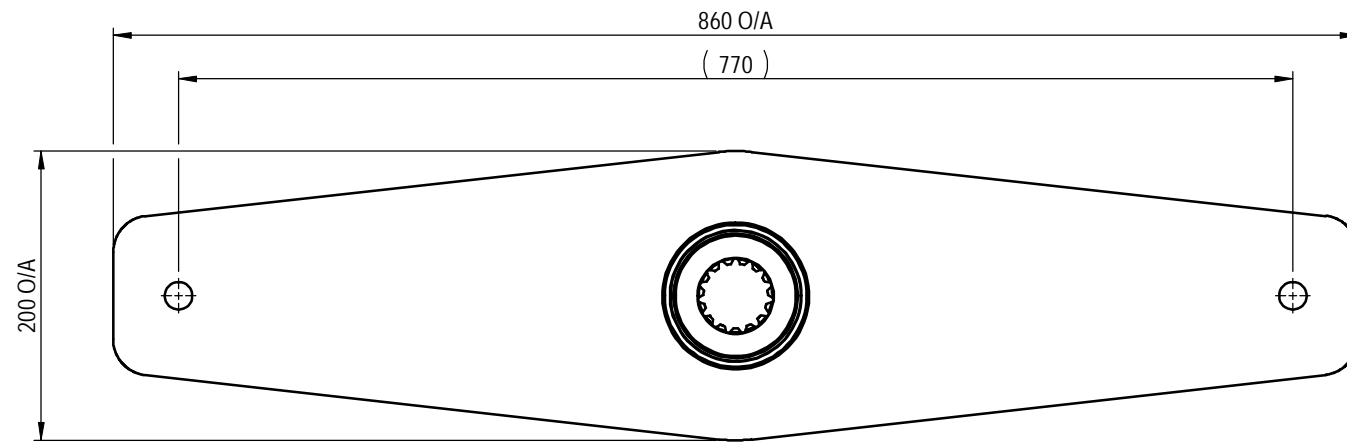
SCALE	1:10	U.N.O
Design	AWP	Jan 14
Drawn	AWP	10.01.14
Check	D.M.	15.01.14
Appd.	D.M.	15.01.14

1800 SKID ASSEMBLY

1800 SABRE SLASHER - SPECIAL

3rd ANGLE PROJECTION U.N.O.	A3
Fieldquip Drawing Number	REV
SBR18 - 201	B

ITEM NO.	QTY.	PART NUMBER	DRAWING NUMBER	WEIGHT IN kg	DESCRIPTION
1	1	HBB4158	Purchased	2.9	75 - 100HP GEARBOX HUB
2	1	06165-7_1	06165-7-1	12.1	CUTTER BAR SERIES - 770
3	1	SBR18-021	SBR18 - 21	11.6	CUTTER BAR LOWER PLATE



DO NOT SCALE  
IF IN DOUBT - ASK WEIGHT 26549.6 GMS

Sheet 1 of 1

No.	Description	DWN	CHK	APPD	DATE
P1	PRELIMINARY DRAWING	-	-	-	-
A	APPROVED FOR CONSTRUCTION	-	-	-	-

199 Bridge Street, Oakey, Qld, 4401

THIS DRAWING IS PRIVATE AND CONFIDENTIAL AND REMAINS THE PROPERTY OF FIELDQUIP.  
RETURNED UPON REQUEST. IT MUST NOT BE COPIED OR LOANED WITHOUT THE CONSENT OF FIELDQUIP.

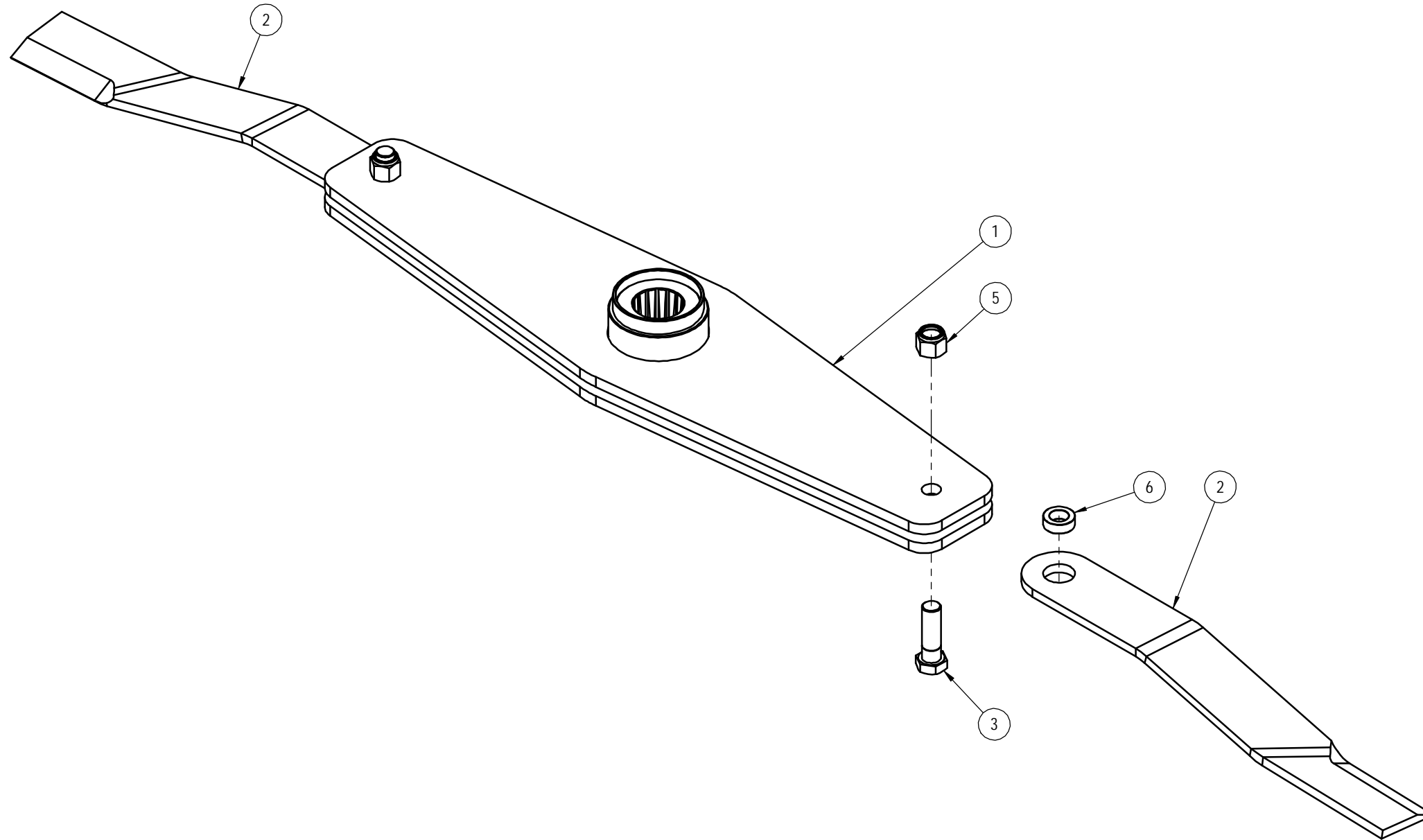
SCALE	1:5	U.N.O
Design	AWP	Jan 14
Drawn	AWP	10.01.14
Check	D.M.	15.01.14
Appd.	D.M.	15.01.14

CUTTER BAR ASSY

1800 SABRE SLASHER - SPECIAL

3rd ANGLE PROJECTION U.N.O.	A 3
Fieldquip Drawing Number	REV
SBR18 - 100	A

ITEM NO.	QTY.	PART NUMBER	DESCRIPTION	DRAWING NUMBER	WEIGHT IN kg	VENDOR	VENDOR PART No
1	1	SBR18-100	CUTTER BAR ASSY	SBR18 - 100	26.54		
2	2	6000	SLASHER BLADE	Purchased	2.93	Bare Co	6000
3	2	HHB $\frac{3}{4}$ UNF-16T $\frac{1}{2}$	$\frac{3}{4}$ " UNF x 2 $\frac{1}{2}$ " HEX BOLT	Purchased	0.20	MAPTCO	E273
4	2	WF20MHT	M20 HIGH TENSILE FLAT WASHER	Purchased	0.02	TBA	TBA
5	2	HNN $\frac{3}{4}$ UNF	$\frac{3}{4}$ " UNF HEX NYLOC NUT	Purchased	0.06	MAPTCO	TBA
6	2	BSH321911	BLADE BUSH	BSH-321911	0.04		



DO NOT SCALE  
IF IN DOUBT - ASK WEIGHT 33009.3 GMS

Sheet 1 of 1

No.	Description	DWN	CHK	APPD	DATE
P1	PRELIMINARY DRAWING	-	-	-	-
A	APPROVED FOR CONSTRUCTION	-	-	-	-
B	WASHERS REMOVED	AWP	K.G.	K.G.	22.08.16

199 Bridge Street, Oakey, Qld, 4401



**FIELDQUIP**  
Australian owned family business

...smarter gear  
...smarter care

THIS DRAWING IS PRIVATE AND CONFIDENTIAL AND REMAINS THE PROPERTY OF FIELDQUIP.  
RETURNED UPON REQUEST. IT MUST NOT BE COPIED OR LOANED WITHOUT THE CONSENT OF FIELDQUIP.

SCALE	1:5	U.N.O	1800 BLADE ASSEMBLY		3rd ANGLE PROJECTION U.N.O.	A3
Design	D.M.	Jan 14	1800 SABRE SLASHER		Fieldquip Drawing Number	REV
Drawn	AWP	10.01.14			SBR18 - 800	B
Check	D.M.	15.01.14				
Appd.	D.M.	15.01.14				