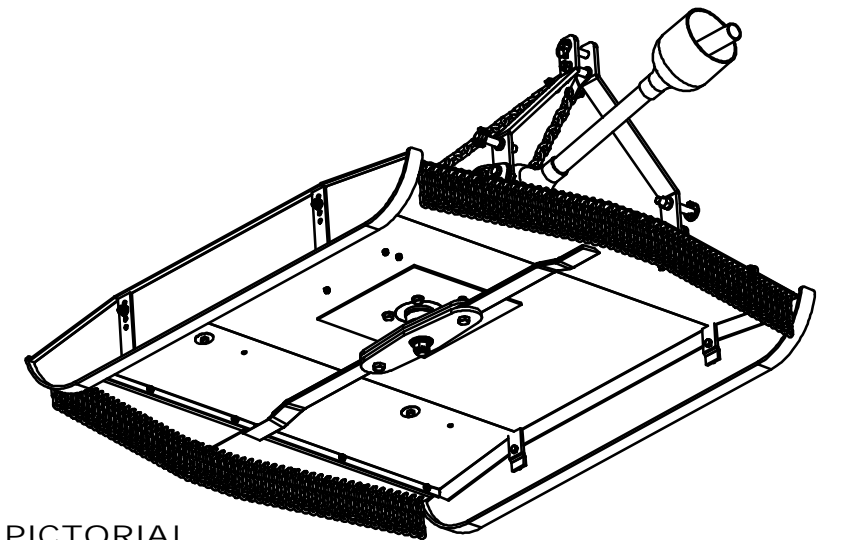
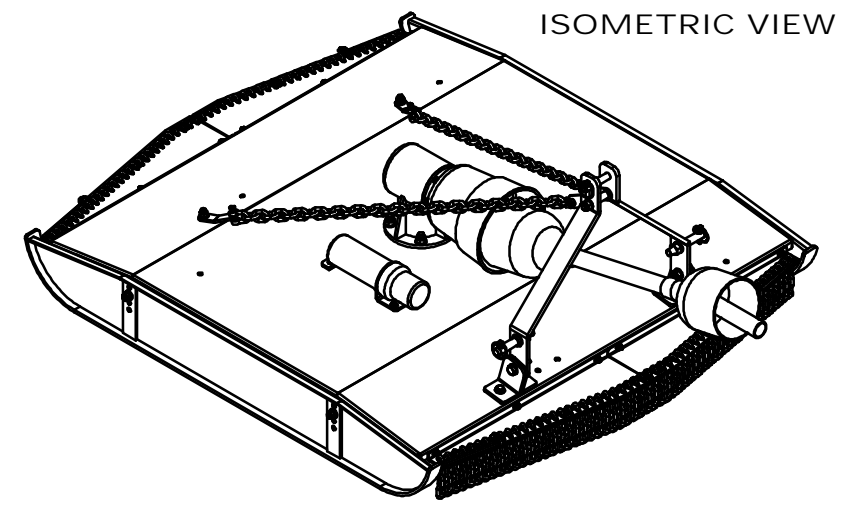
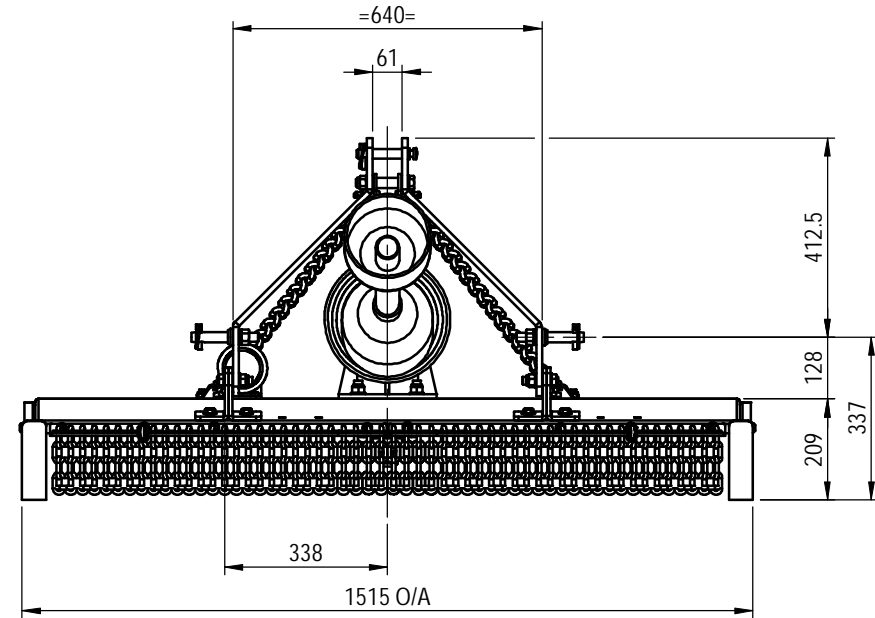
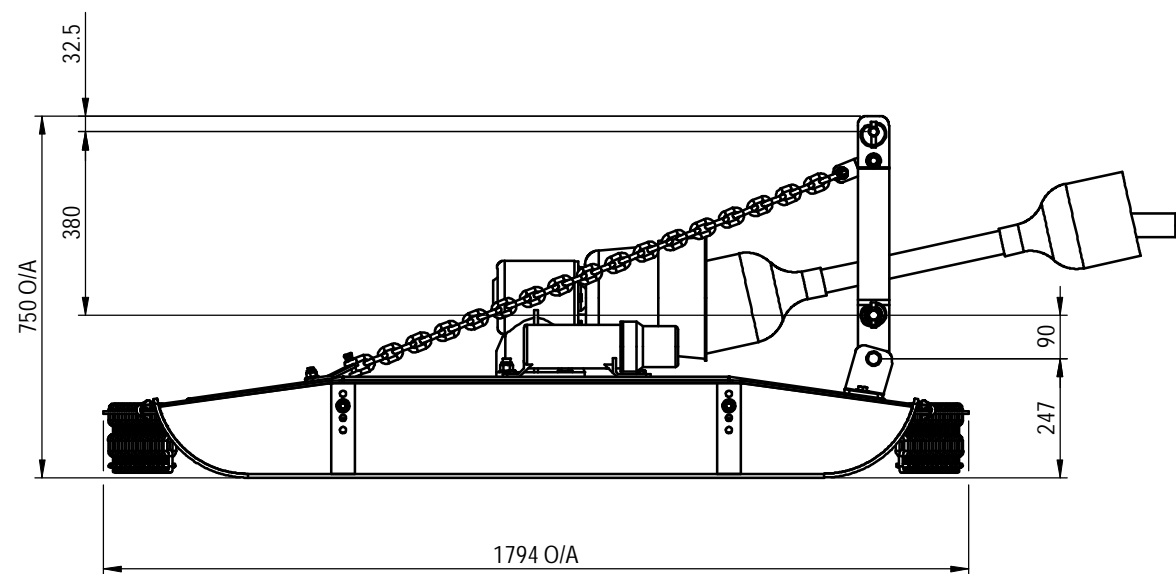


ITEM NO.	QTY.	PART NUMBER	DESCRIPTION	DRAWING NUMBER	WEIGHT IN kg	VENDOR	VENDOR PART No	ITEM NO.	QTY.	PART NUMBER	DESCRIPTION	DRAWING NUMBER	WEIGHT IN kg	VENDOR	VENDOR PART No
1	1	SBR15-200	SABRE 1500 DECK ASSEMBLY	SBR15 - 200	97.62			31	1	SBR12-009	HEADSTOCK SPACER	SBR12 - 09	0.07		
2	2	SBR15-201	1500 SKID ASSEMBLY	SBR15-201	18.06			32	1	HHB110M16	M16 x 110 HEX BOLT	Purchased	0.22	TBA	TBA
3	1	ENC001	DOCUMENT HOLDER	Purchased	0.64	Bare Co	B1970	33	2	HHB60M16	M16 x 60 HEX BOLT	Purchased	0.14	TBA	TBA
4	1	GBB2666	40 HP GEARBOX	Purchased	16.35	Bare Co	B2666	34	4	SBR12-014	HEADSTOCK RETAINER PLATE	SBR12 - 14	#VALUE!		
5	1	COV002	6" PTO GUARD	Purchased	4.68	Bare Co	AS8209	35	4	HHB40M12	M12 x 40 HEX HEAD BOLT	Purchased	0.05	TBA	TBA
6	1	SBR15-800	1500 BLADE ASSEMBLY	SBR15 - 800	15.25			36	2	SBR12-016	CHAIN - HEADSTOCK TAB	SBR12 - 16	0.15		
7	1	FQB4164	40HP CLUTCH	Purchased	4.48	Bare Co	B4164	37	2	DSHC10	10mm D Shackle	Purchased	#VALUE!	TBA	TBA
8	1	PTO003	43" 6 SPLINE PTO SHAFT - SERIES 4	Purchased	13.72	Bare Co	AB4075	38	2	SBR15-007	HEADSTOCK RETAINER CHAIN	SBR15 - 07	2.26		
9	15	HHB25M8	M8 x 25 HEX BOLT	Purchased	0.02	TBA	TBA	39	2	SBR12-017	CHAIN ANCHOR TAB	SBR12 - 17	0.15		
10	23	HNN8M	M8 NYLOC NUT	Purchased	0.01	TBA	TBA	40	2	HHB30M12	M12 x 30 HEX HEAD BOLT	Purchased	0.04	TBA	TBA
11	27	WF8M	M8 FLAT WASHER	Purchased	0.00	TBA	TBA	41	2	SBR15-008	CHAIN SUPPORT BRACKET RH	SBR15 - 08	3.50		
12	4	HHB50M16	M16 x 50 HEX BOLT	Purchased	0.12	TBA	TBA	42	56	SBR12-019	GUARD CHAIN - 9 LINK	SBR12 - 19	0.35		
13	7	HNN16M	M16 NYLOC NUT	Purchased	0.04	TBA	TBA	43	6	UCLP3_8	3/8 U-CLAMP	Purchased	0.09		
14	18	WF16M	M16 FLAT WASHER	Purchased	0.01	TBA	TBA	44	4	SBR15-010	CHAIN LOCATING ROD SIDE	SBR15 - 10	#VALUE!		
15	4	HHB45M12	M12 x 45 HEX HEAD BOLT	Purchased	0.06	TBA	TBA	45	2	SBR12-020	CHAIN LOCATING ROD CENTRE	SBR12 - 20	0.10		
16	10	HNN12M	M12 NYLOC NUT	Purchased	0.02	TBA	TBA	46	2	SBR15-009	CHAIN SUPPORT BRACKET LH	SBR15 - 09	3.51		
17	10	WF12M	M12 FLAT WASHER	Purchased	0.01	TBA	TBA	47	4	DSHC08	8mm D-Shackle	Purchased	0.14	TBA	TBA
18	4	SW12	M12 SPRING WASHER ZN PL	Purchased	0.01	TBA	TBA	48	2	HHB35M12	M12 x 35 HEX HEAD BOLT	Purchased	0.05	TBA	TBA
19	4	HHB5_16UNC-18T½	5/16" UNC x ½" HEX HEAD BOLT	Purchased	0.01	MAPTCO	TBA	49	2	SBR15-026	1.8 WIRE ROPE RETAINER	SBR15 - 26	0.41		
20	1	TLPS01	TOP LINK PIN SHORT	Purchased	0.26	Bare Co	B75	50	4	UCLP8mm	8mm U-CLAMP	Purchased	0.08	TBA	TBA
21	2	22DLP	LIFT PIN	Purchased	0.40	Bare Co	B198	51	6	SBR12-027	M12 MUDGUARD WASHER	SBR12 - 27	0.03		
22	2	22DLPSW	M16 SP WASHER ZN PL	Purchased	0.00	TBA	TBA								
23	2	22DLPN	M16 HEX HEAD NUT	Purchased	0.06	TBA	TBA								
24	3	LP10D	10mm LYNCH PIN	Purchased	0.05	Bare Co	B6								
25	1	GB005_2	CASTLE NUT - GEARBOX	Purchased	0.23	Bare Co	B2665								
26	1	SP 4.0 x 35	4.0 x 35 SPLIT PIN	Purchased	0.00	TBA	TBA								
27	2	SBR12-010	HEADSTOCK MOUNT BRKT - RH	SBR12 - 10	0.77										
28	2	SBR12-011	HEADSTOCK MOUNT BRKT - LH	SBR12 - 11	0.77										
29	2	SBR12-013	HEADSTOCK SWIVEL BUSH	SBR12 - 13	#VALUE!										
30	2	SBR12-012	HEADSTOCK SIDE ARM	SBR12 - 12	3.86										



UNDERSIDE PICTORIAL VIEW

DO NOT SCALE
IF IN DOUBT - ASK WEIGHT 244796.0 GMS

No.	Description	DWN	CHK	APPD	DATE
P1	PRELIMINARY DRAWING	-	-	-	-
A	APPROVED FOR CONSTRUCTION	-	-	-	-
B	HEADSTOCK BRACKETS REVERSED, SWIVEL BUSHES REMOVED	AWP	D.M.	D.M.	01.07.14
C	FASTENERS AND PARTS UPDATE	MG	AWP	G.R.	23.03.16
D	ISSUE NUMBER CORRECTED, GENERAL TIDY UP	AWP	MG	G.R.	28.06.16

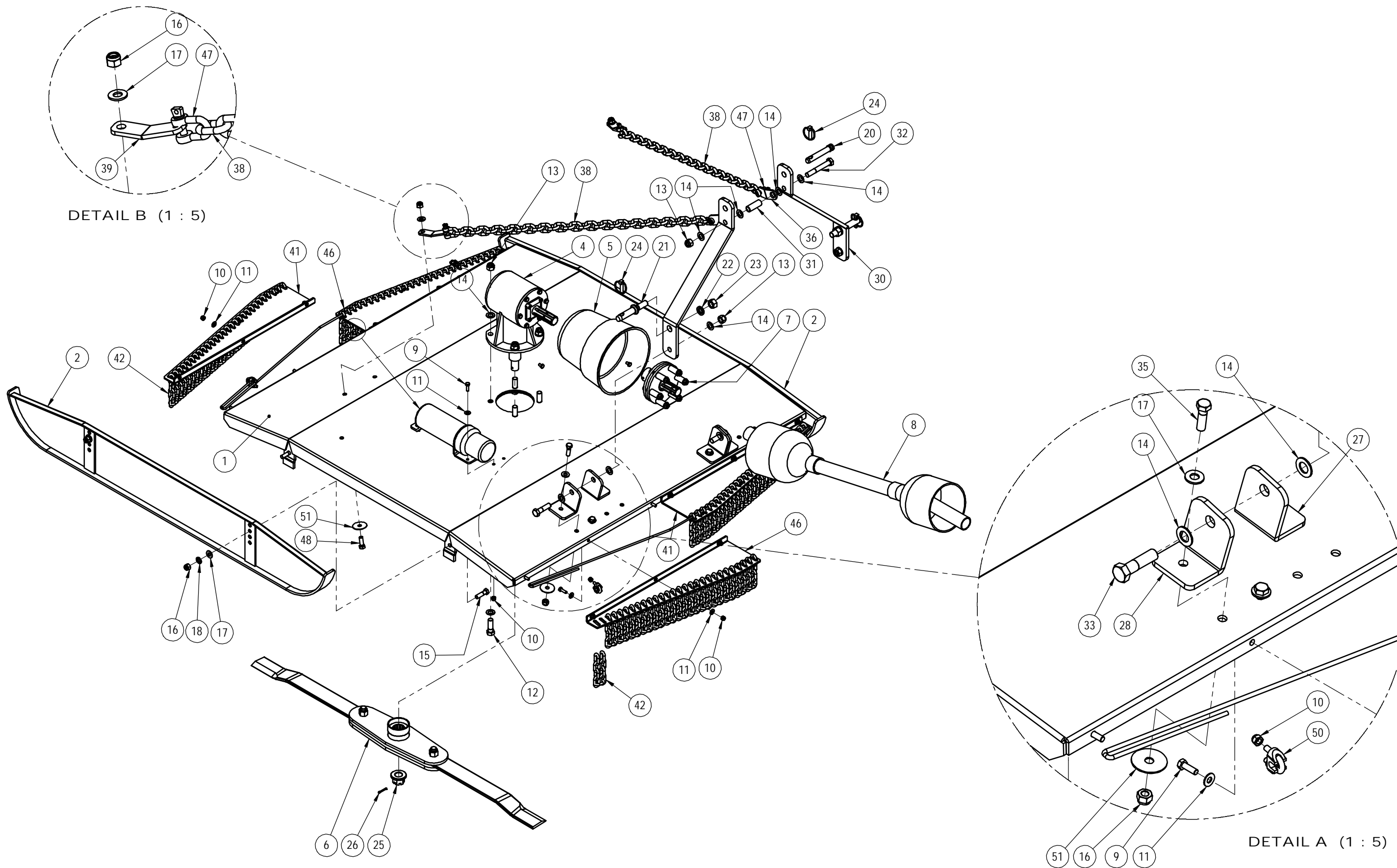
199 Bridge Street, Oakey, Qld, 4401

THIS DRAWING IS PRIVATE AND CONFIDENTIAL AND REMAINS THE PROPERTY OF FIELDQUIP. RETURNED UPON REQUEST. IT MUST NOT BE COPIED OR LOANED WITHOUT THE CONSENT OF FIELDQUIP.

SCALE	1:15	U.N.O
Design	AWP	Aug 13
Drawn	AWP	05.10.13
Check	D.M.	10.10.13
Appd.	D.M.	10.10.13

SABRE 1500 ROTARY SLASHER
1500 SABRE SLASHER MkII

3rd ANGLE PROJECTION U.N.O.	A.3
Fieldquip Drawing Number	REV
SBR15 - 500	D



DO NOT SCALE
IF IN DOUBT - ASK WEIGHT 244796.0 GMS

Sheet 2 of 2

No.	Description	DWN	CHK	APPD	DATE
P1	PRELIMINARY DRAWING	-	-	-	-
A	APPROVED FOR CONSTRUCTION	-	-	-	-
B	HEADSTOCK BRACKETS REVERSED, SWIVEL BUSHES REMOVED	AWP	D.M.	D.M.	01.07.14
C	FASTENERS AND PARTS UPDATE	MG	AWP	G.R.	23.03.16
D	ISSUE NUMBER CORRECTED, GENERAL TIDY UP	AWP	MG	G.R.	28.06.16

199 Bridge Street, Oakey, Qld, 4401

THIS DRAWING IS PRIVATE AND CONFIDENTIAL AND REMAINS THE PROPERTY OF FIELDQUIP.
RETURNED UPON REQUEST. IT MUST NOT BE COPIED OR LOANED WITHOUT THE CONSENT OF FIELDQUIP.

SCALE	1:12.5 U.N.O	
Design	AWP	Aug 13
Drawn	AWP	05.10.13
Check	D.M.	10.10.13
Appd.	D.M.	10.10.13

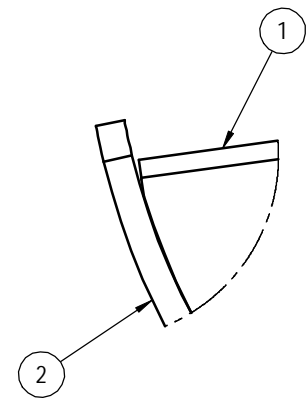
SABRE 1500 ROTARY SLASHER

1500 SABRE SLASHER MkII

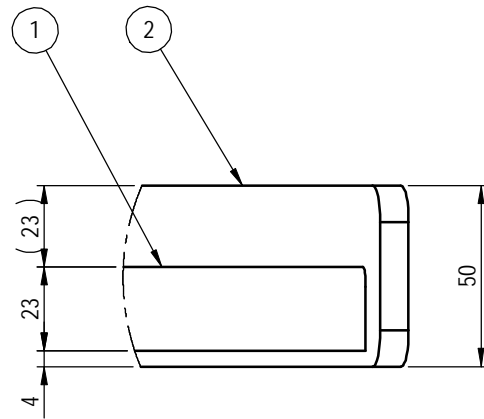
3rd ANGLE PROJECTION U.N.O.	A3
Fieldquip Drawing Number	REV
SBR15 - 500	D

ITEM NO.	QTY	PART NUMBER	DRAWING NUMBER	WEIGHT IN kg	DESCRIPTION
1	1	SBR15-005	SBR15 - 05	7.0	SKID SIDE PLATE
2	1	SBR15-006	SBR15 - 06	5.5	SKID WEAR PLATE
3	2	SBR12-007	SBR12 - 07	0.4	SKID STIFFENER PLATE
4	2	SBR12-008	SBR12 - 08	0.0	SKID GUSSET

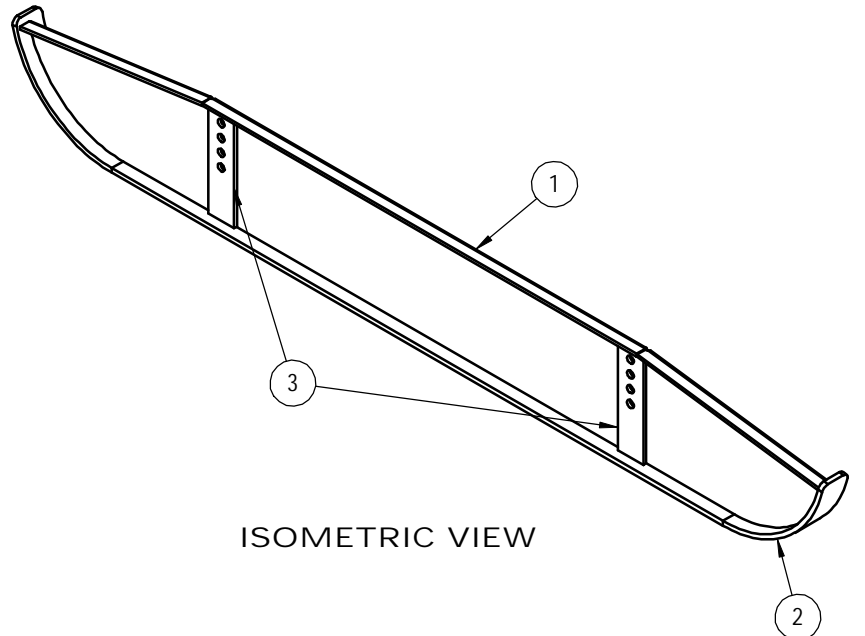
ALL WELDS 5mm CFW UNO



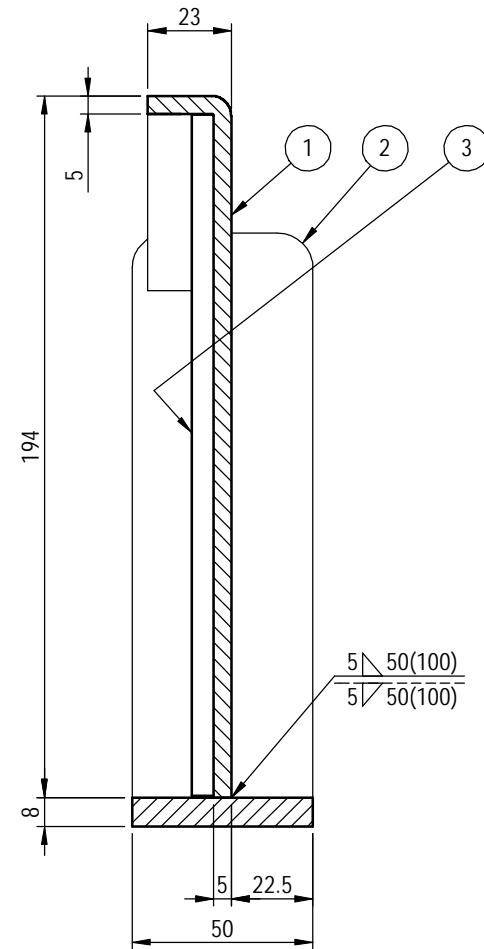
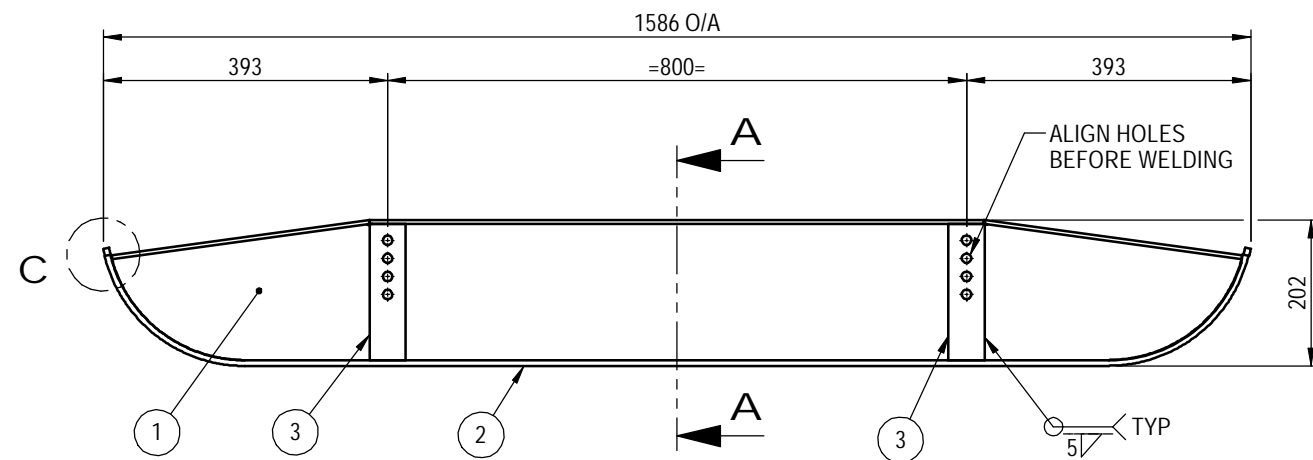
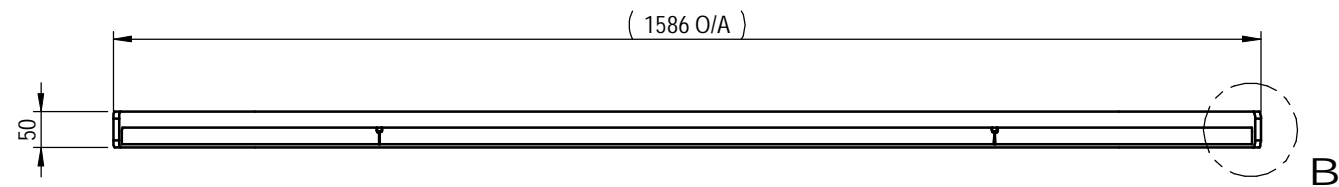
DETAIL C (1 : 2)



DETAIL B (1 : 2)



ISOMETRIC VIEW



SECTION A-A (1 : 2)

DO NOT SCALE
IF IN DOUBT - ASK WEIGHT 18059.2 GMS

199 Bridge Street, Oakey, Qld, 4401

No.	Description	DWN	CHK	APPD	DATE
P1	PRELIMINARY DRAWING	-	-	-	-
A	APPROVED FOR CONSTRUCTION	-	-	-	-
B	ITEM 1 - MATERIAL THICKNESS INCREASED, ITEM 4 REMOVED	AWP	D.M.	D.M.	11.07.14


FIELDQUIP ...smarter gear ...smarter care
 Australian owned family business

THIS DRAWING IS PRIVATE AND CONFIDENTIAL AND REMAINS THE PROPERTY OF FIELDQUIP.
 RETURNED UPON REQUEST. IT MUST NOT BE COPIED OR LOANED WITHOUT THE CONSENT OF FIELDQUIP.

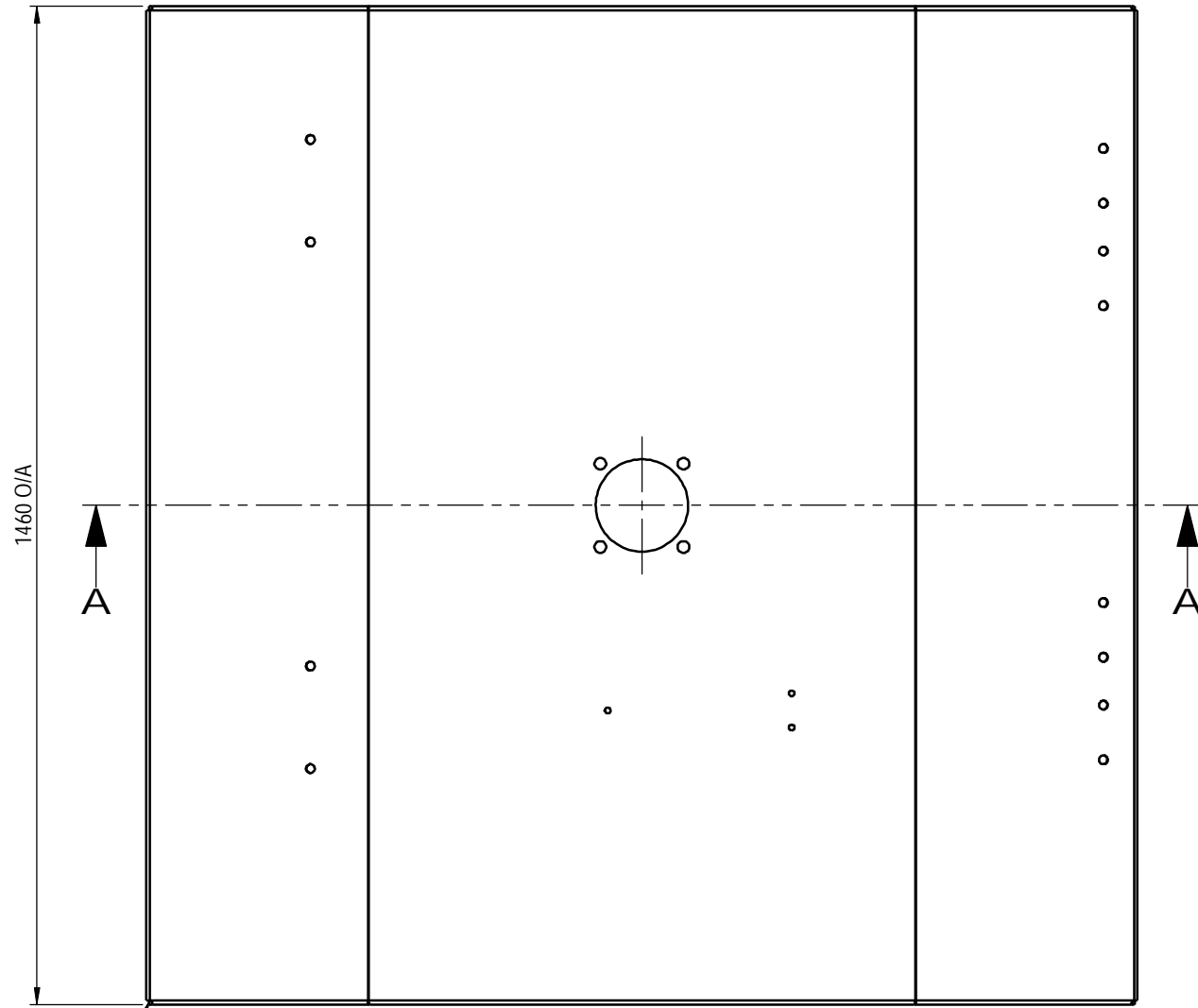
SCALE	1:10	U.N.O
Design	AWP	Aug 13
Drawn	AWP	06.10.13
Check	D.M.	10.10.13
Appd.	D.M.	10.10.13

1500 SKID ASSEMBLY

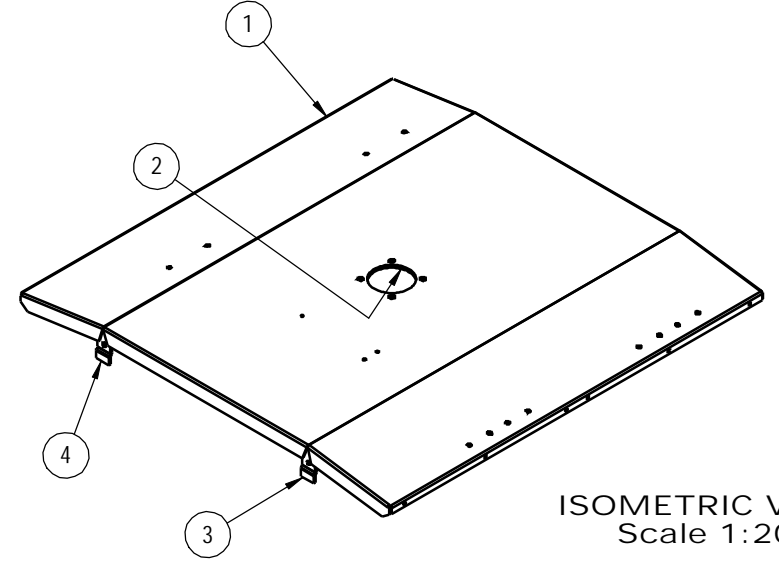
1500 SABRE SLASHER MkII

Sheet 1 of 1	
3rd ANGLE PROJECTION U.N.O.	A3
Fieldquip Drawing Number	REV
SBR15-201	B

ITEM NO.	QTY.	PART NUMBER	DRAWING NUMBER	WEIGHT IN kg	DESCRIPTION
1	1	SBR15-001	SBR15 - 01	90.5	1500 DECK PRESSING
2	1	SBR12-002	SBR12 - 02	5.7	GEARBOX MOUNT PLATE
3	2	SBR12-003	SBR12 - 03	0.3	SKID MOUNT PLATE RH
4	2	SBR12-004	SBR12 - 04	0.3	SKID MOUNT PLATE LH

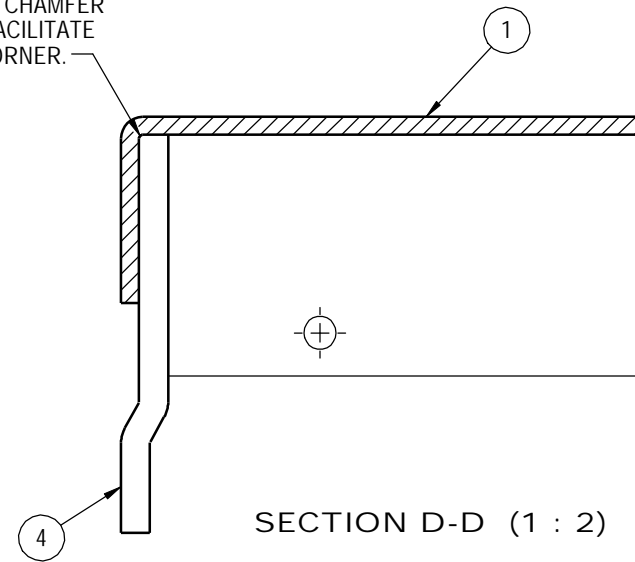


SEAL WELD ALL CORNERS

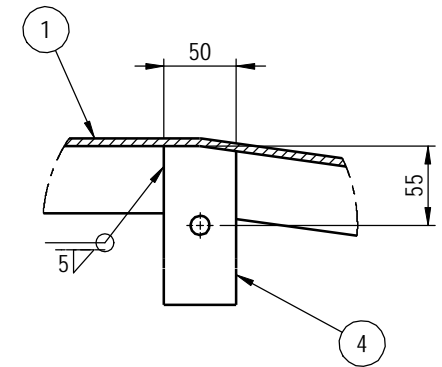


ISOMETRIC VIEW
Scale 1:20

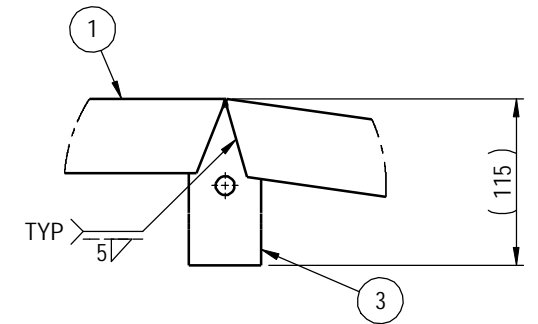
MAY REQUIRE RELIEF CHAMFER ON ITEMS 3 & 4 TO FACILITATE TIGHT FIT INTO CORNER.



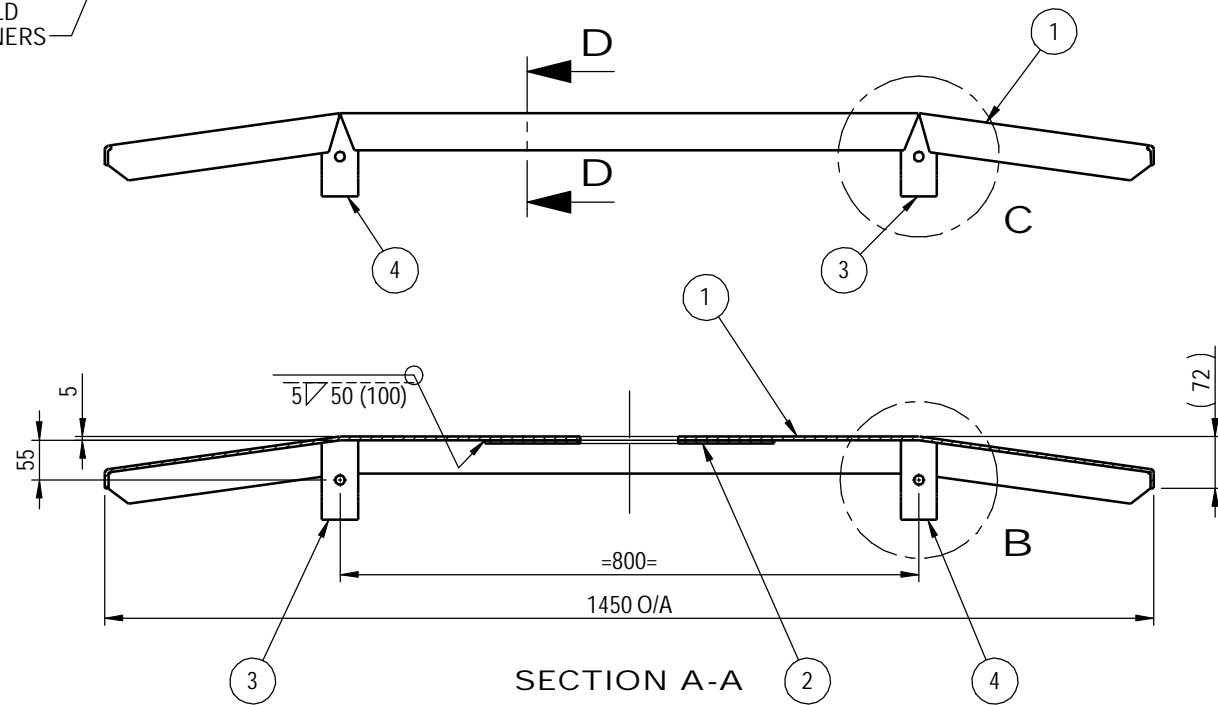
SECTION D-D (1 : 2)



DETAIL B (1 : 5)



DETAIL C (1 : 5)



SECTION A-A

DO NOT SCALE
IF IN DOUBT - ASK WEIGHT 97622.3 GMS

Sheet 1 of 1

No.	Description	DWN	CHK	APPD	DATE
P1	PRELIMINARY DRAWING	-	-	-	-
A	APPROVED FOR CONSTRUCTION	-	-	-	-

199 Bridge Street, Oakey, Qld, 4401

FIELDQUIP *...smarter gear ...smarter care*
Australian owned family business

THIS DRAWING IS PRIVATE AND CONFIDENTIAL AND REMAINS THE PROPERTY OF FIELDQUIP.
RETURNED UPON REQUEST. IT MUST NOT BE COPIED OR LOANED WITHOUT THE CONSENT OF FIELDQUIP.

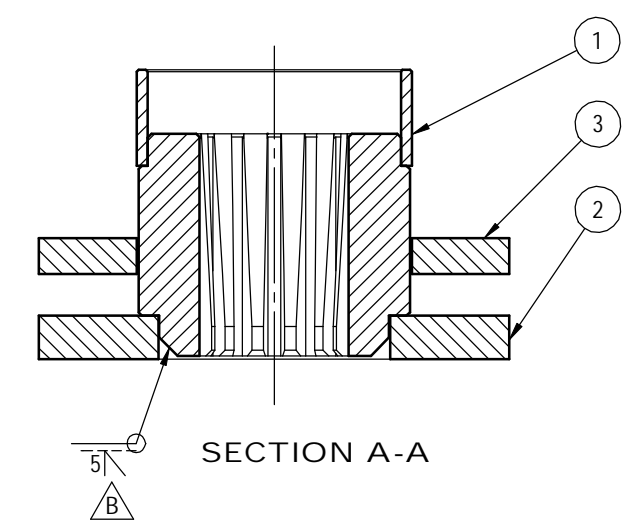
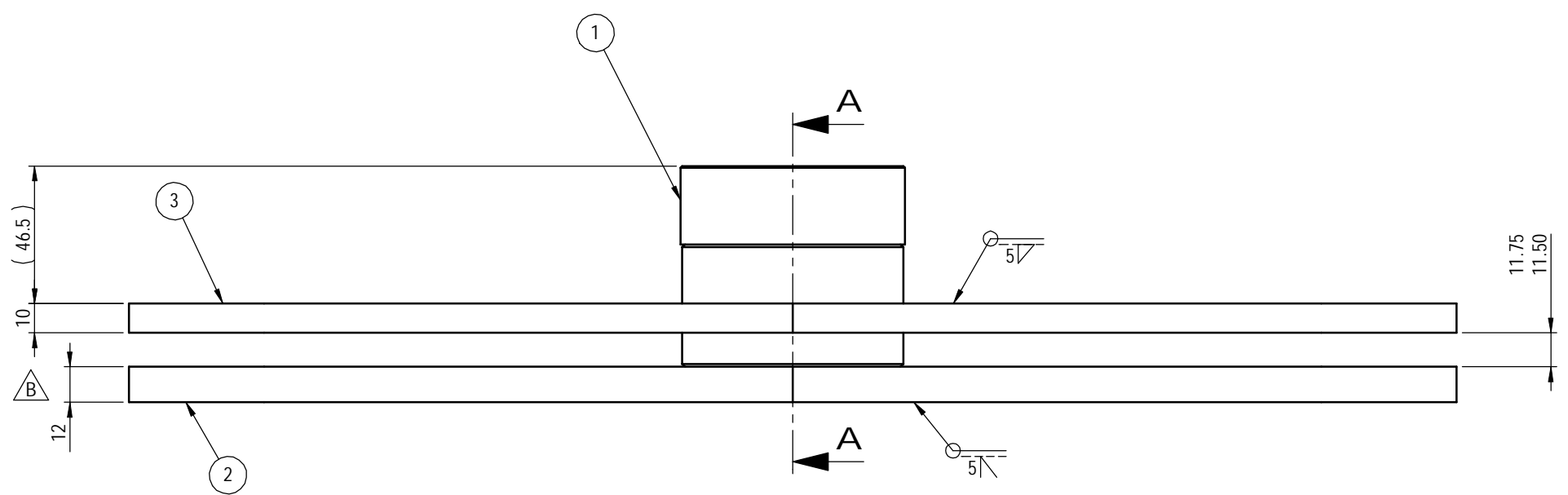
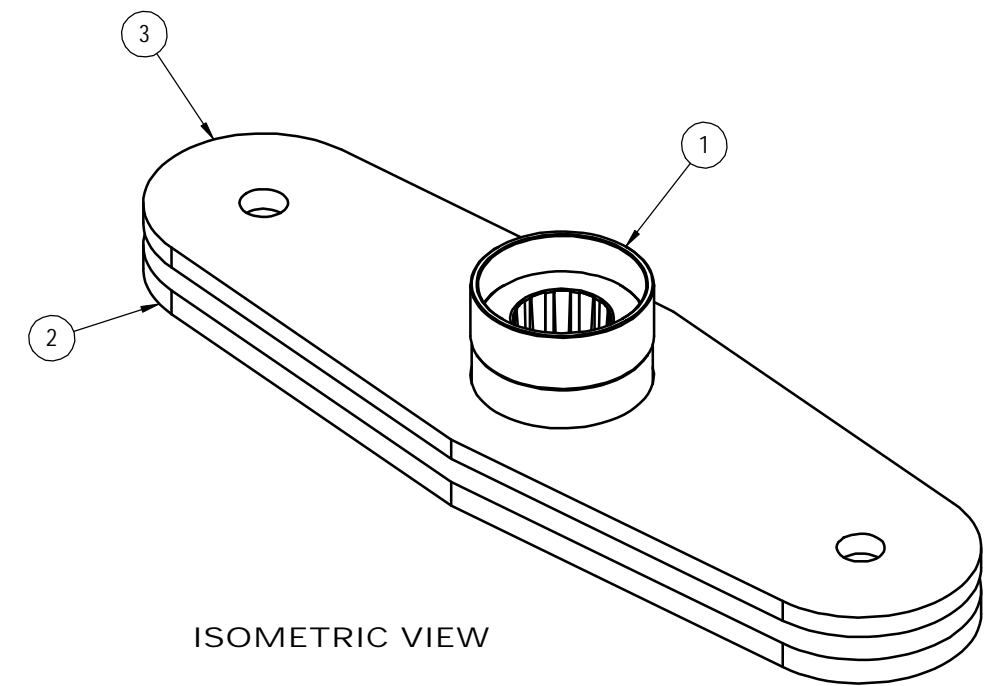
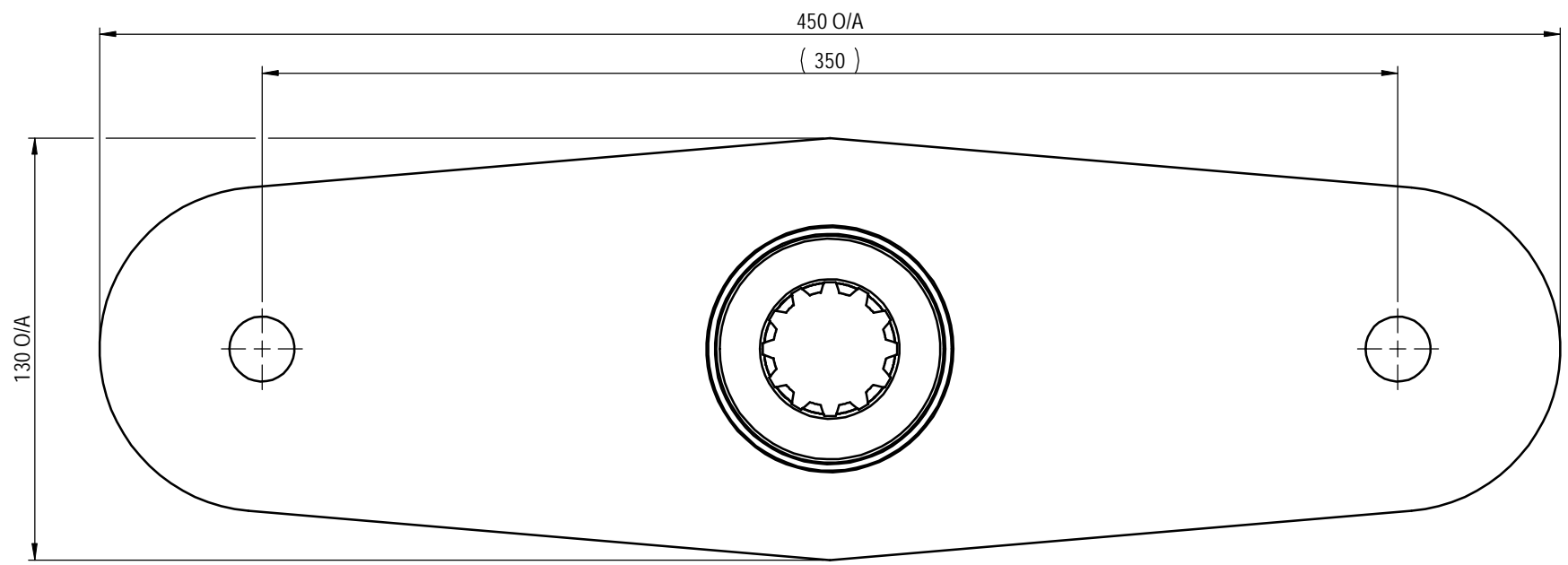
SCALE	1:10	U.N.O
Design	AWP	Aug 13
Drawn	AWP	05.10.13
Check	D.M.	10.10.13
Appd.	D.M.	10.10.13

SABRE 1500 DECK ASSEMBLY

1500 SABRE SLASHER MkII

3rd ANGLE PROJECTION U.N.O.	A3
Fieldquip Drawing Number	REV
SBR15 - 200	A

ITEM NO.	QTY.	PART No	DESCRIPTION	DRAWING No	WEIGHT kg	VENDOR	VENDOR No
1	1	HBB3701_S	Purchased	1528.6	GEARBOX H	Bare Co	B3701
2	1	1858J3-40	1858J3-40	420	LOWER BLADE BAR	1500	
3	1	1858J2-40	1858J2-40	3397	TOP BLADE BAR	1500	



DO NOT SCALE
IF IN DOUBT - ASK WEIGHT 9127.6 GMS

Sheet 1 of 1

No.	Description	DWN	CHK	APPD	DATE
P1	PRELIMINARY DRAWING	-	-	-	-
A	APPROVED FOR CONSTRUCTION	-	-	-	-
B	DIMENSIONS CLARIFIED, DESCRIPTION UPDATED, WELD NOTE MOVED	AWP	MG	G.R.	27.06.16

199 Bridge Street, Oakey, Qld, 4401

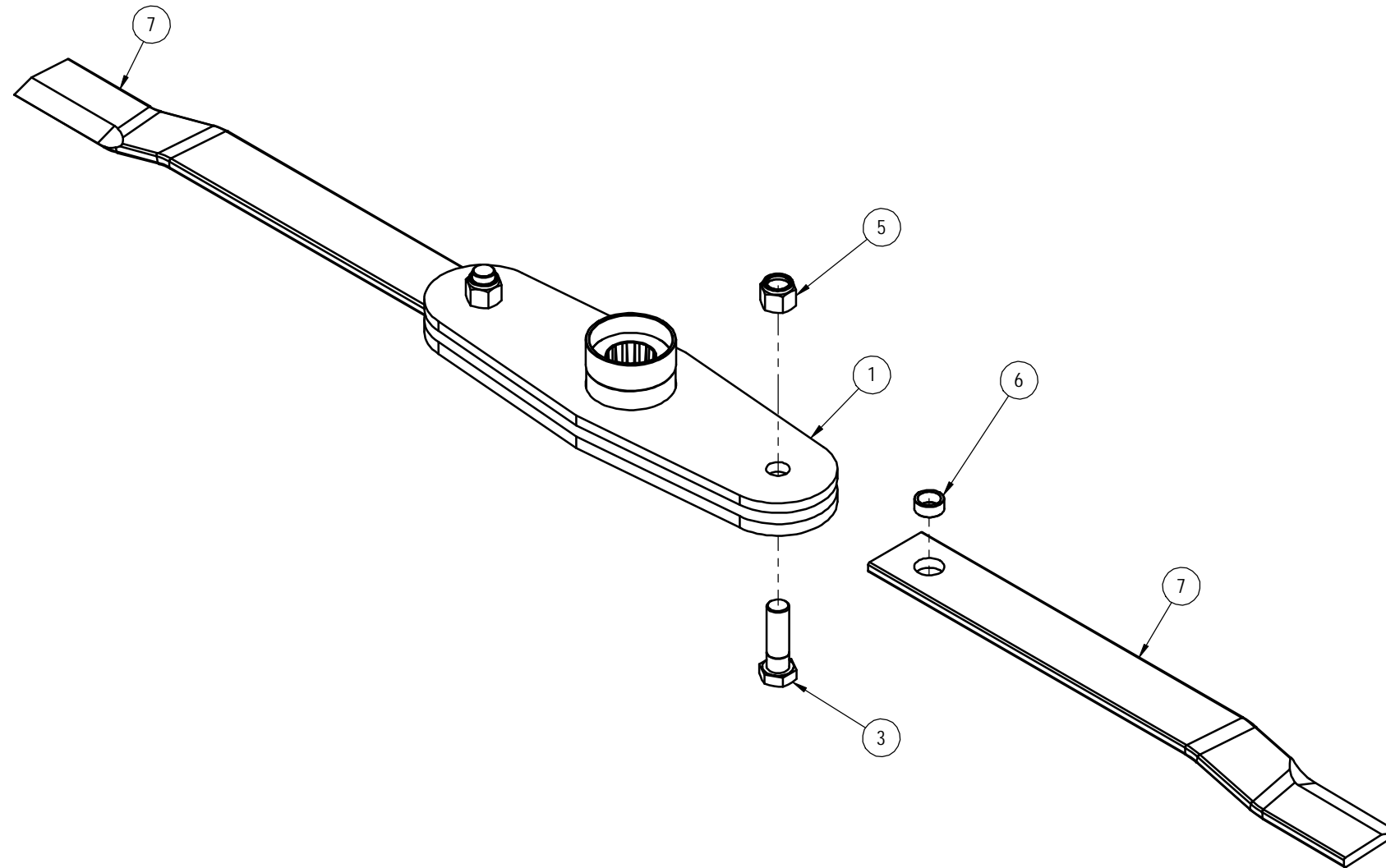
THIS DRAWING IS PRIVATE AND CONFIDENTIAL AND REMAINS THE PROPERTY OF FIELDQUIP.
RETURNED UPON REQUEST. IT MUST NOT BE COPIED OR LOANED WITHOUT THE CONSENT OF FIELDQUIP.

SCALE	1:2	U.N.O
Design	Walsh	-
Drawn	AWP	06.10.13
Check	D.M.	10.10.13
Appd.	D.M.	10.10.13

1500 BLADE CARRIER
1500 SABRE SLASHER MkII

3rd ANGLE PROJECTION U.N.O.	A3
Fieldquip Drawing Number	REV
SBR15 - 100	B

ITEM NO.	QTY.	PART NUMBER	DESCRIPTION	DRAWING NUMBER	WEIGHT IN kg	VENDOR	VENDOR PART No
1	1	SBR15-100	1500 BLADE CARRIER	SBR15 - 100	9.13		
2	2	1567K11	SLASHER BLADE	Purchased	2.76	TBA	1567K11
3	2	HHB $\frac{3}{4}$ UNF-16T2 $\frac{1}{2}$	$\frac{3}{4}$ " UNF x 2 $\frac{1}{2}$ " HEX BOLT	Purchased	0.20	MAPTCO	E273
4	2	WF20MHT	M20 HIGH TENSILE FLAT WASHER	Purchased	0.02	TBA	TBA
5	2	HNN $\frac{3}{4}$ UNF	$\frac{3}{4}$ " UNF HEX NYLOC NUT	Purchased	0.06	MAPTCO	TBA
6	2	BSH251911	BLADE BUSH	BSH-251911			
7	2	1567	SLASHER BLADE	Purchased	2.78	PRATCO	SBH406



DO NOT SCALE
IF IN DOUBT - ASK WEIGHT 15250.6 GMS

Sheet 1 of 1

No.	Description	DWN	CHK	APPD	DATE
P1	PRELIMINARY DRAWING	-	-	-	-
A	APPROVED FOR CONSTRUCTION	-	-	-	-
B	BLADE UPDATED, WASHER REMOVED	AWP	MG	G.R.	27.06.16

199 Bridge Street, Oakey, Qld, 4401



FIELDQUIP

...smarter gear
...smarter care

Australian owned family business

THIS DRAWING IS PRIVATE AND CONFIDENTIAL AND REMAINS THE PROPERTY OF FIELDQUIP.
RETURNED UPON REQUEST. IT MUST NOT BE COPIED OR LOANED WITHOUT THE CONSENT OF FIELDQUIP.

SCALE	1:5	U.N.O
Design	D.M.	Aug 13
Drawn	AWP	06.10.13
Check	D.M.	10.10.13
Appd.	D.M.	10.10.13

1500 BLADE ASSEMBLY
1500 SABRE SLASHER MkII

3rd ANGLE PROJECTION U.N.O.	A3
Fieldquip Drawing Number	REV
SBR15 - 800	B