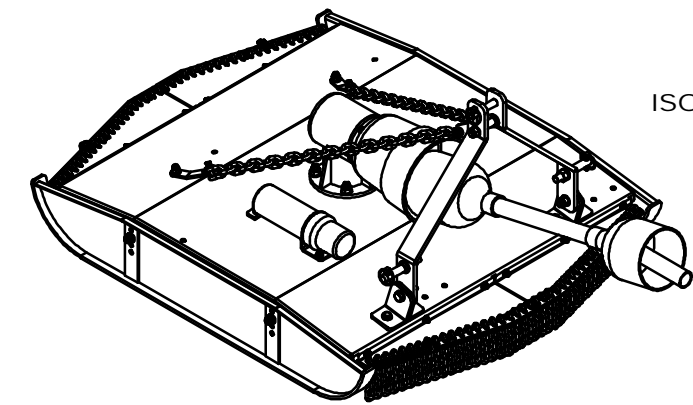
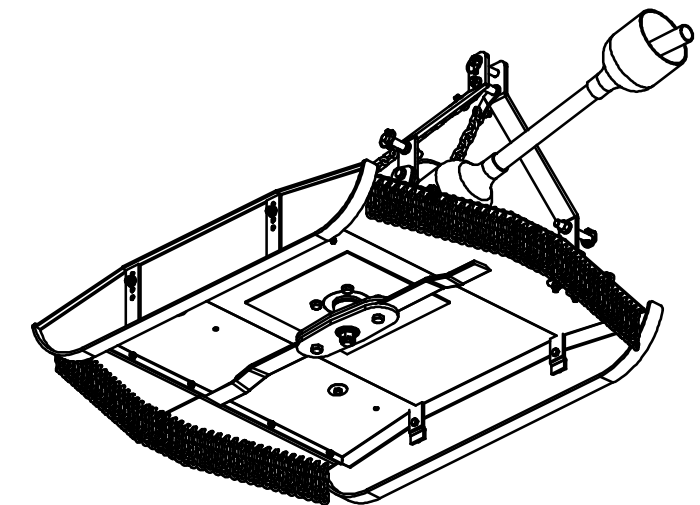
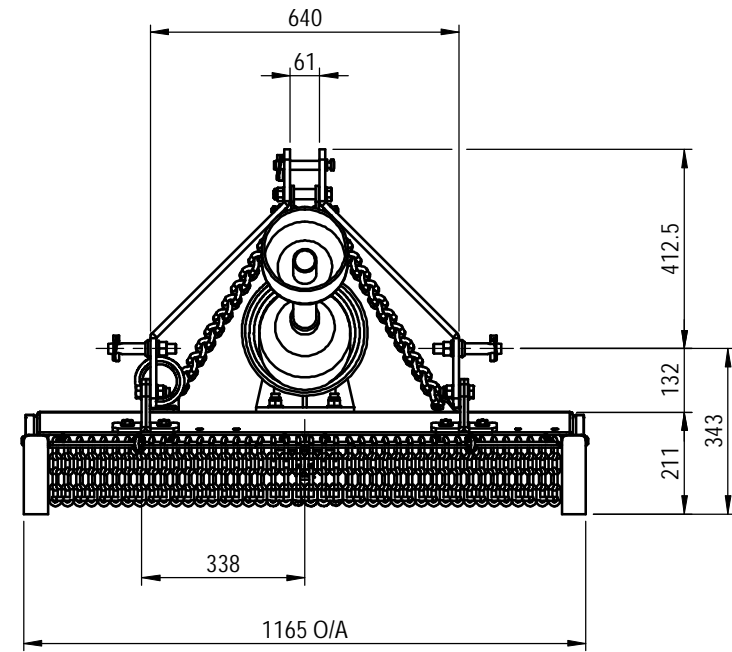
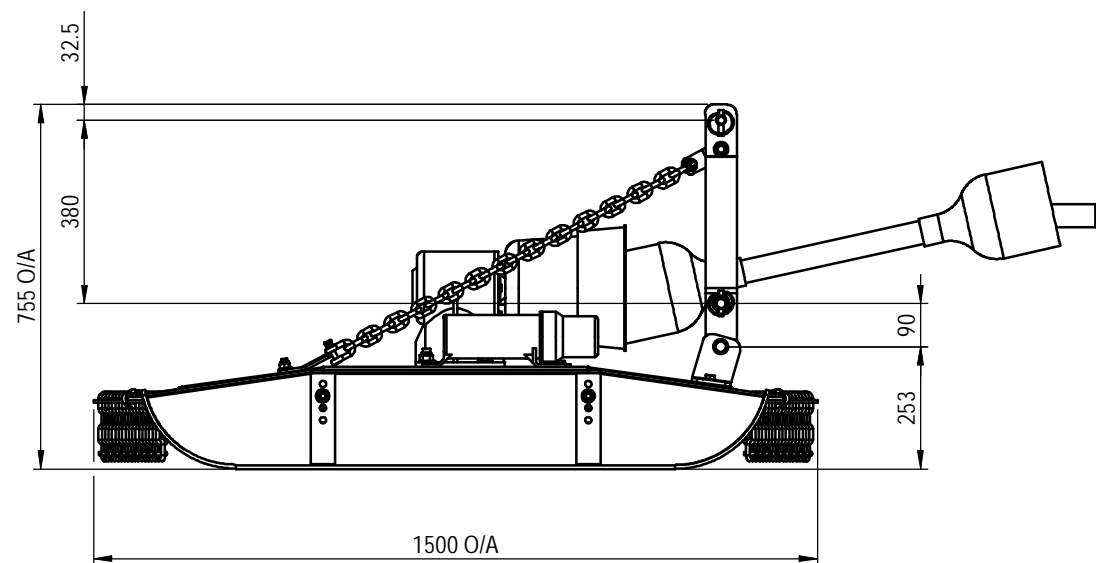


ITEM NO.	QTY.	PART NUMBER	DESCRIPTION	DRAWING NUMBER	WEIGHT IN kg	VENDOR	VENDOR PART No	ITEM NO.	QTY.	PART NUMBER	DESCRIPTION	DRAWING NUMBER	WEIGHT IN kg	VENDOR	VENDOR PART No
1	1	SBR12-200	DECK ASSEMBLY	SBR12-200	62.70			31	1	SBR12-009	HEADSTOCK SPACER	SBR12 - 09	0.07		
2	2	SBR12-201	SABRE SIDE SKID	SBR12-201	14.96			32	1	HHB110M16	M16 x 110 HEX BOLT	Purchased	0.22	TBA	TBA
3	1	ENC001	DOCUMENT HOLDER	Purchased	0.64	Bare Co	B1970	33	2	HHB60M16	M16 x 60 HEX BOLT	Purchased	0.14	TBA	TBA
4	1	GBB2666	40 HP GEARBOX	Purchased	16.35	Bare Co	B2666	34	4	SBR12-014	HEADSTOCK RETAINER PLATE	SBR12 - 14	#VALUE!		
5	1	COV002	6" PTO GUARD	Purchased	4.68	Bare Co	AS8209	35	4	HHB40M12	M12 x 40 HEX HEAD BOLT	Purchased	0.05	TBA	TBA
6	1	SBR12-800	1200 BLADE ASSEMBLY	SBR12-800	12.33			36	2	SBR12-016	CHAIN - HEADSTOCK TAB	SBR12 - 16	0.15		
7	1	FOB4164	40HP CLUTCH	Purchased	4.48	Bare Co	B4164	37	4	DSHC10	10mm D Shackle	Purchased	0.14	TBA	TBA
8	1	PTO003	43" 6 SPLINE PTO SHAFT - SERIES 4	Purchased	13.72	Bare Co	AB4075	38	2	SBR12-015	HEADSTOCK RETAINER CHAIN	SBR12 - 15	1.70		
9	15	HHB25M8	M8 x 25 HEX BOLT	Purchased	0.02	TBA	TBA	39	2	SBR12-017	CHAIN ANCHOR TAB	SBR12 - 17	0.15		
10	23	HNN8M	M8 NYLOC NUT	Purchased	0.01	TBA	TBA	40	2	HHB30M12	M12 x 30 HEX HEAD BOLT	Purchased	0.04	TBA	TBA
11	27	WF8M	M8 FLAT WASHER	Purchased	0.00	TBA	TBA	41	2	SBR12-018	CHAIN SUPPORT BRACKET RH	SBR12 - 18	2.75		
12	4	HHB50M16	M16 x 50 HEX BOLT	Purchased	0.12	TBA	TBA	42	42	SBR12-019	GUARD CHAIN - 9 LINK	SBR12 - 19	0.35		
13	7	HNN16M	M16 NYLOC NUT	Purchased	0.04	TBA	TBA	43	6	UCLP3-8	3/8 U-CLAMP	Purchased	0.09		
14	18	WF16M	M16 FLAT WASHER	Purchased	0.01	TBA	TBA	44	4	SBR12-021	CHAIN LOCATING ROD SIDE	SBR12 - 21	0.22		
15	4	HHB45M12	M12 x 45 HEX HEAD BOLT	Purchased	0.06	TBA	TBA	45	2	SBR12-020	CHAIN LOCATING ROD CENTRE	SBR12 - 20	0.10		
16	10	HNN12M	M12 NYLOC NUT	Purchased	0.02	TBA	TBA	46	2	SBR12-022	CHAIN SUPPORT BRACKET LH	SBR12 - 22	2.76		
17	10	WF12M	M12 FLAT WASHER	Purchased	0.01	TBA	TBA	47	4	SBR12-023	GUARD CHAIN - 4 LINK	SBR12 - 23	0.16		
18	4	SW12	M12 SPRING WASHER ZN PL	Purchased	0.01	TBA	TBA	48	4	DSHC08	8mm D-Shackle	Purchased	0.14	TBA	TBA
19	4	HHB5_16UNC-18T½	5/16" UNC x ½" HEX HEAD BOLT	Purchased	0.01	MAPTCO	TBA	49	2	HHB35M12	M12 x 35 HEX HEAD BOLT	Purchased	0.05	TBA	TBA
20	1	TLPS01	TOP LINK PIN SHORT	Purchased	0.26	Bare Co	B75	50	2	SBR12-026	1.5 WIRE ROPE RETAINER	SBR12 - 26	0.34		
21	2	22DLP	LIFT PIN	Purchased	0.40	Bare Co	B198	51	4	UCLP8mm	8mm U-CLAMP	Purchased	0.08	TBA	TBA
22	2	22DLPSW	M16 SP WASHER ZN PL	Purchased	0.00	TBA	TBA	52	6	SBR12-027	M12 MUDGUARD WASHER	SBR12 - 27	0.03		
23	2	22DLPN	M16 HEX HEAD NUT	Purchased	0.06	TBA	TBA	53	2	22DLPAS	LIFT PIN ASSEMBLY	Purchased	0.46	Bare Co	B198
24	3	LP10D	10mm LYNCH PIN	Purchased	0.05	Bare Co	B6								
25	1	GB005_2	CASTLE NUT - GEARBOX	Purchased	0.23	Bare Co	B2665								
26	1	SP 4.0 x 35	4.0 x 35 SPLIT PIN	Purchased	0.00	TBA	TBA								
27	2	SBR12-010	HEADSTOCK MOUNT BRKT - RH	SBR12 - 10	0.77										
28	2	SBR12-011	HEADSTOCK MOUNT BRKT - LH	SBR12 - 11	0.77										
29	2	SBR12-013	HEADSTOCK SWIVEL BUSH	SBR12 - 13	#VALUE!										
30	2	SBR12-012	HEADSTOCK SIDE ARM	SBR12 - 12	3.86										



ISOMETRIC VIEW



UNDERSIDE PICTORIAL VIEW

DO NOT SCALE  
IF IN DOUBT - ASK WEIGHT 191540.4 GMS

Sheet 1 of 2

No.	Description	DWN	CHK	APPD	DATE
P1	PRELIMINARY DRAWING	-	-	-	-
A	APPROVED FOR CONSTRUCTION	-	-	-	-
B	HEADSTOCK BRACKETS TURNED AROUND, SWIVEL BUSH REMOVED.	AWP	D.M.	D.M.	13.06.14
C	FASTENERS AND PARTS UPDATE	MG	AWP	G.R.	23.03.16
D	LIFT PIN REPLACED WITH SINGLE PART	AWP	MG	G.R.	24.06.16

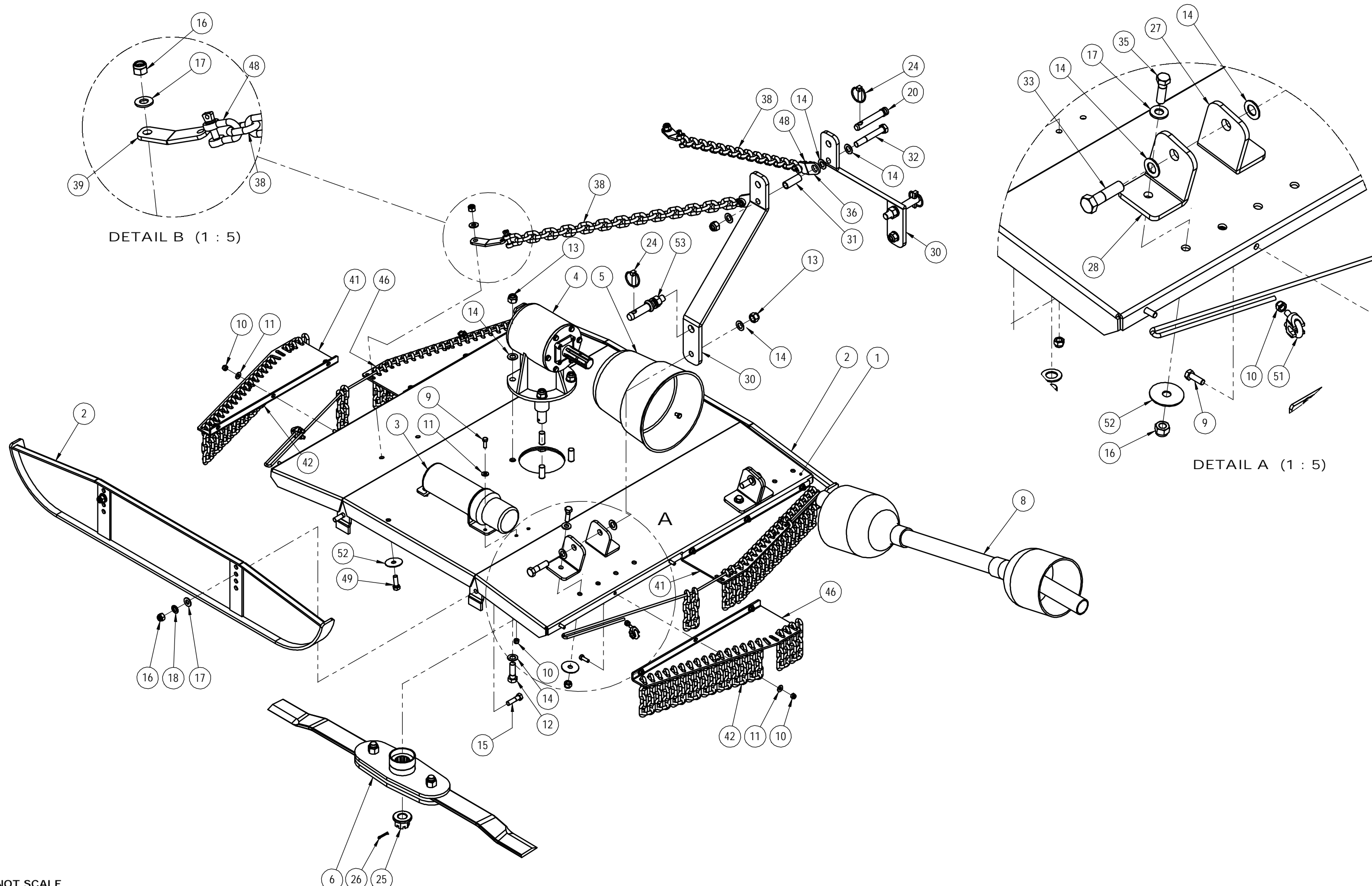
199 Bridge Street, Oakey, Qld, 4401

THIS DRAWING IS PRIVATE AND CONFIDENTIAL AND REMAINS THE PROPERTY OF FIELDQUIP. RETURNED UPON REQUEST. IT MUST NOT BE COPIED OR LOANED WITHOUT THE CONSENT OF FIELDQUIP.

SCALE	1:15	U.N.O
Design	AWP	Aug 13
Drawn	AWP	02.09.13
Check	D.M.	10.10.13
Appd.	D.M.	10.10.13

SABRE 1200 ROTARY SLASHER  
  
1200 SABRE SLASHER MkII

3rd ANGLE PROJECTION U.N.O.	A3
Fieldquip Drawing Number	REV
SBR12 - 500	D



DO NOT SCALE  
IF IN DOUBT - ASK WEIGHT 191540.4 GMS

Sheet 2 of 2

No.	Description	DWN	CHK	APPD	DATE
P1	PRELIMINARY DRAWING	-	-	-	-
A	APPROVED FOR CONSTRUCTION	-	-	-	-
B	HEADSTOCK BRACKETS TURNED AROUND, SWIVEL BUSH REMOVED.	AWP	D.M.	D.M.	13.06.14
C	FASTENERS AND PARTS UPDATE	MG	AWP	G.R.	23.03.16
D	LIFT PIN REPLACED WITH SINGLE PART	AWP	MG	G.R.	24.06.16

199 Bridge Street, Oakey, Qld, 4401

**FIELDQUIP** *...smarter gear ...smarter care*  
Australian owned family business

THIS DRAWING IS PRIVATE AND CONFIDENTIAL AND REMAINS THE PROPERTY OF FIELDQUIP.  
RETURNED UPON REQUEST. IT MUST NOT BE COPIED OR LOANED WITHOUT THE CONSENT OF FIELDQUIP.

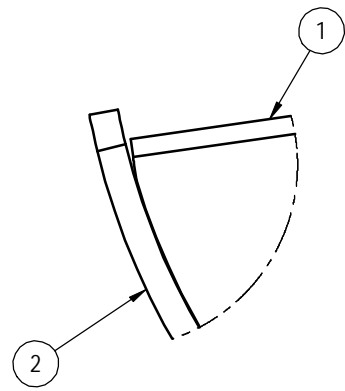
SCALE	1:10	U.N.O
Design	AWP	Aug 13
Drawn	AWP	02.09.13
Check	D.M.	10.10.13
Appd.	D.M.	10.10.13

SABRE 1200 ROTARY SLASHER  
  
1200 SABRE SLASHER MkII

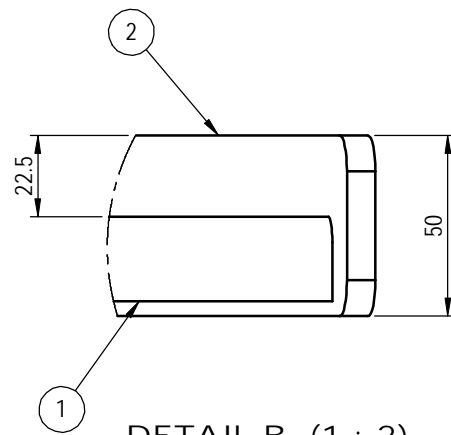
3rd ANGLE PROJECTION U.N.O.	A3
Fieldquip Drawing Number	REV
SBR12 - 500	D

ITEM NO.	QTY.	PART NUMBER	DRAWING NUMBER	WEIGHT IN kg	DESCRIPTION
1	1	SBR12-005	SBR12 - 05		SKID SIDE PLATE
2	1	SBR12-006	SBR12 - 06	4.6	SKID WEAR PLATE
3	2	SBR12-007	SBR12 - 07	0.4	SKID STIFFENER PLATE
4	2	SBR12-008	SBR12 - 08	0.0	SKID GUSSET

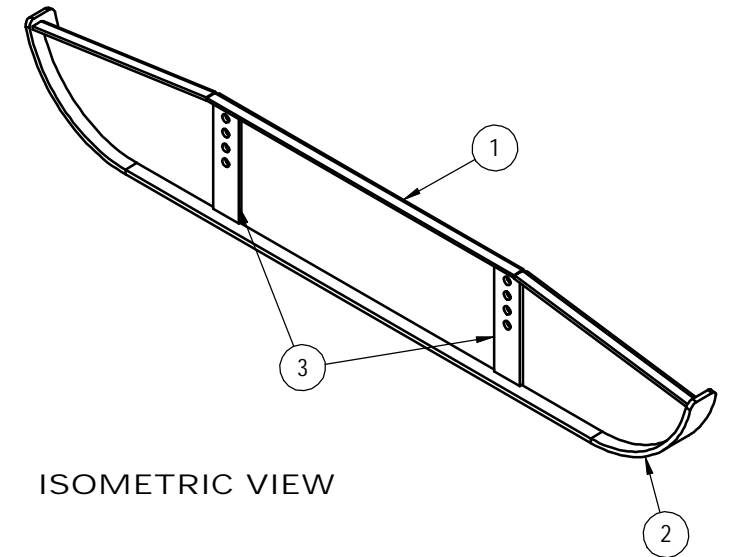
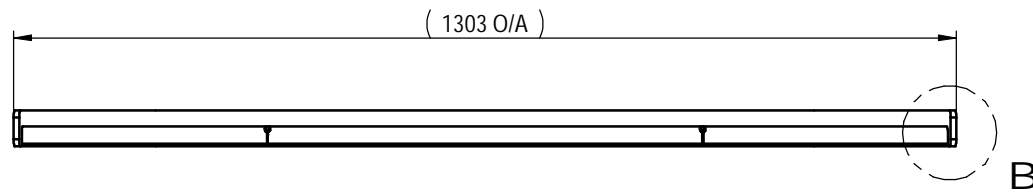
ALL WELDS 5mm CFW UNO



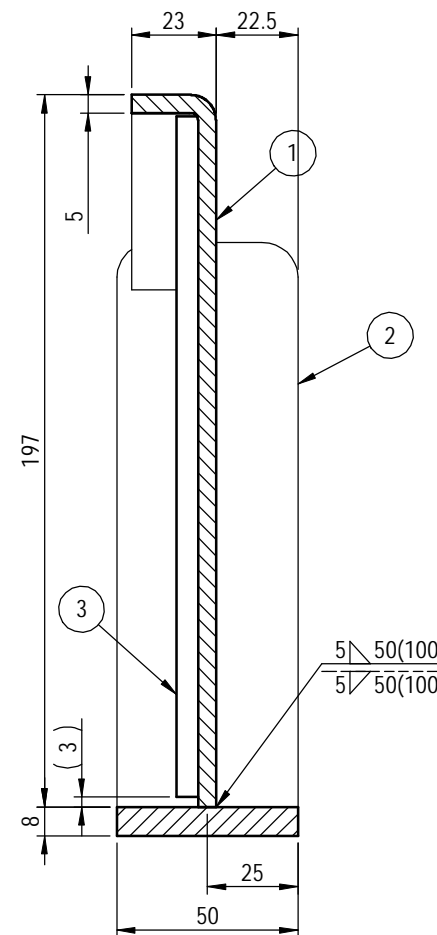
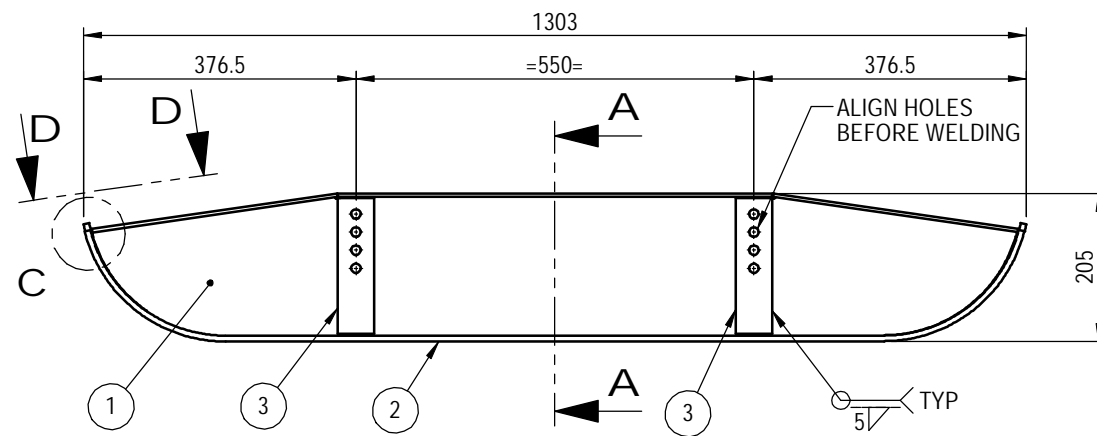
DETAIL C (1 : 2)



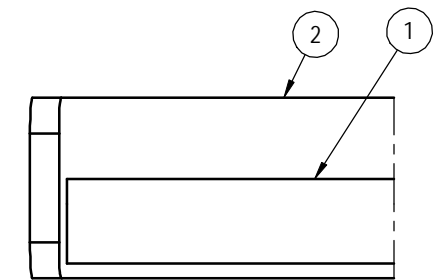
DETAIL B (1 : 2)



ISOMETRIC VIEW



SECTION A-A (1 : 2)



VIEW D-D (1 : 2)

DO NOT SCALE  
IF IN DOUBT - ASK WEIGHT 14964.2 GMS

No.	Description	DWN	CHK	APPD	DATE
P1	PRELIMINARY DRAWING	-	-	-	-
A	APPROVED FOR CONSTRUCTION	-	-	-	-
B	ITEM 4 REMOVED, DIMENSIONS UPDATED	AWP	MG	G.R.	24.06.16

199 Bridge Street, Oakey, Qld, 4401

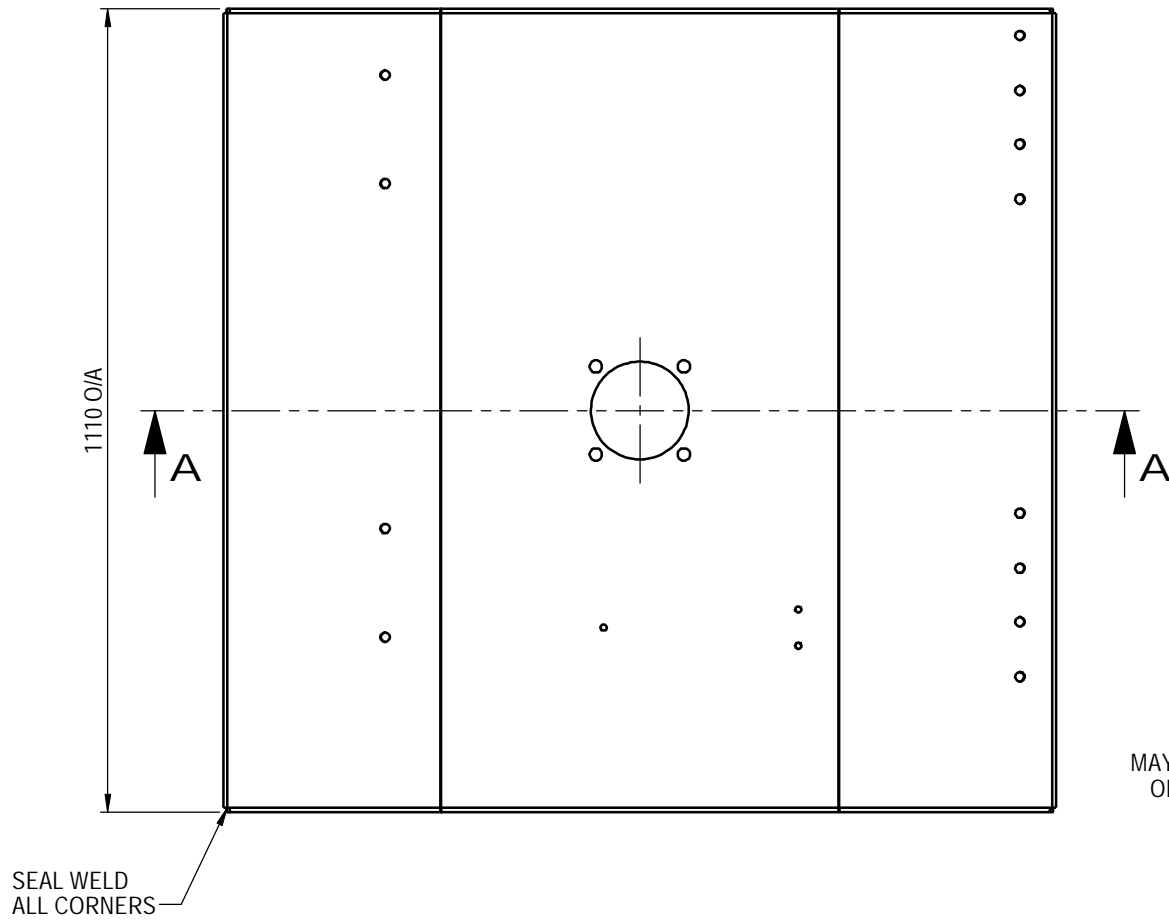
THIS DRAWING IS PRIVATE AND CONFIDENTIAL AND REMAINS THE PROPERTY OF FIELDQUIP.  
RETURNED UPON REQUEST. IT MUST NOT BE COPIED OR LOANED WITHOUT THE CONSENT OF FIELDQUIP.

SCALE	1:10	U.N.O
Design	AWP	Aug 13
Drawn	AWP	21.09.13
Check	D.M.	25.09.13
Appd.	D.M.	25.09.13

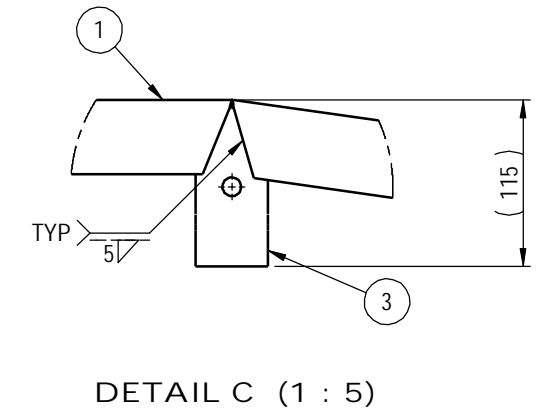
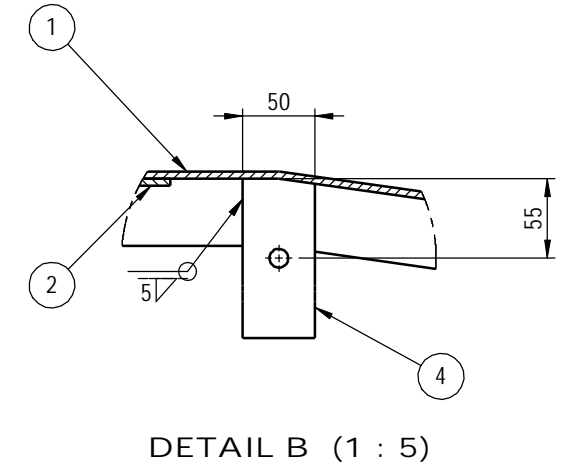
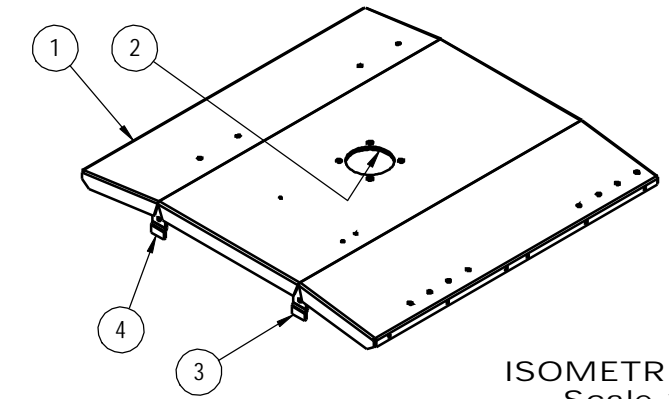
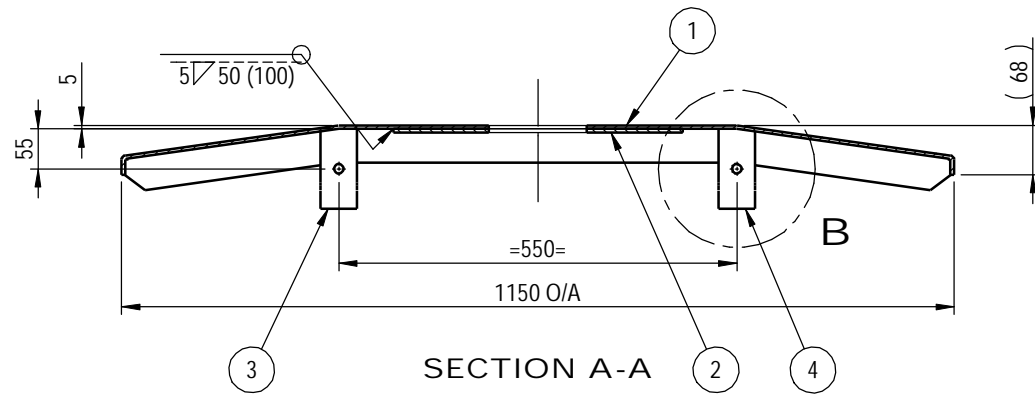
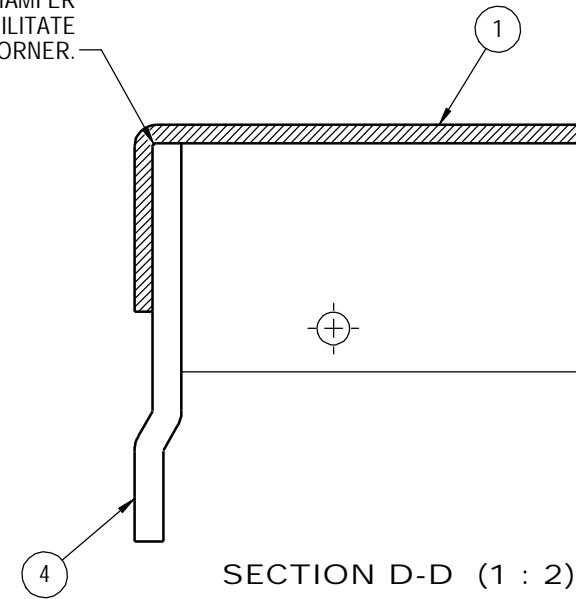
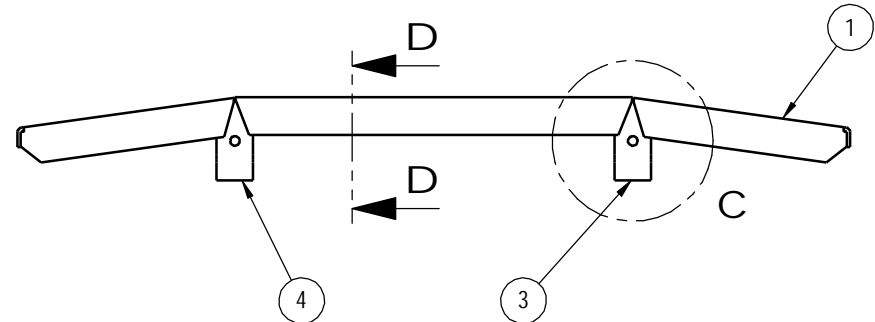
SABRE SIDE SKID	
1200 SABRE SLASHER MkII	

3rd ANGLE PROJECTION U.N.O.	
A3	Fieldquip Drawing Number
REV	SBR12-201

ITEM NO.	QTY.	PART NUMBER	DRAWING NUMBER	WEIGHT IN kg	DESCRIPTION
1	1	SBR12-001	SBR12 - 01	55.6	1200 DECK PRESSING
2	1	SBR12-002	SBR12 - 02	5.7	GEARBOX MOUNT PLATE
3	2	SBR12-003	SBR12 - 03	0.3	SKID MOUNT PLATE RH
4	2	SBR12-004	SBR12 - 04	0.3	SKID MOUNT PLATE LH



MAY REQUIRE RELIEF CHAMFER ON ITEMS 3 & 4 TO FACILITATE TIGHT FIT INTO CORNER.



DO NOT SCALE  
IF IN DOUBT - ASK WEIGHT 62707.9 GMS

Sheet 1 of 1

No.	Description	DWN	CHK	APPD	DATE
P1	PRELIMINARY DRAWING	-	-	-	-
A	APPROVED FOR CONSTRUCTION	-	-	-	-

199 Bridge Street, Oakey, Qld, 4401

**FIELDQUIP**  
Australia owned family business

...smarter gear  
...smarter care

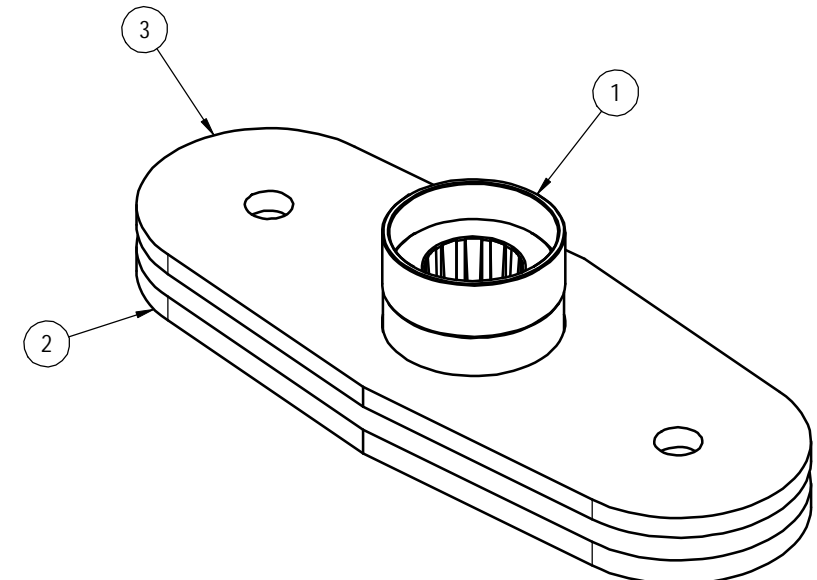
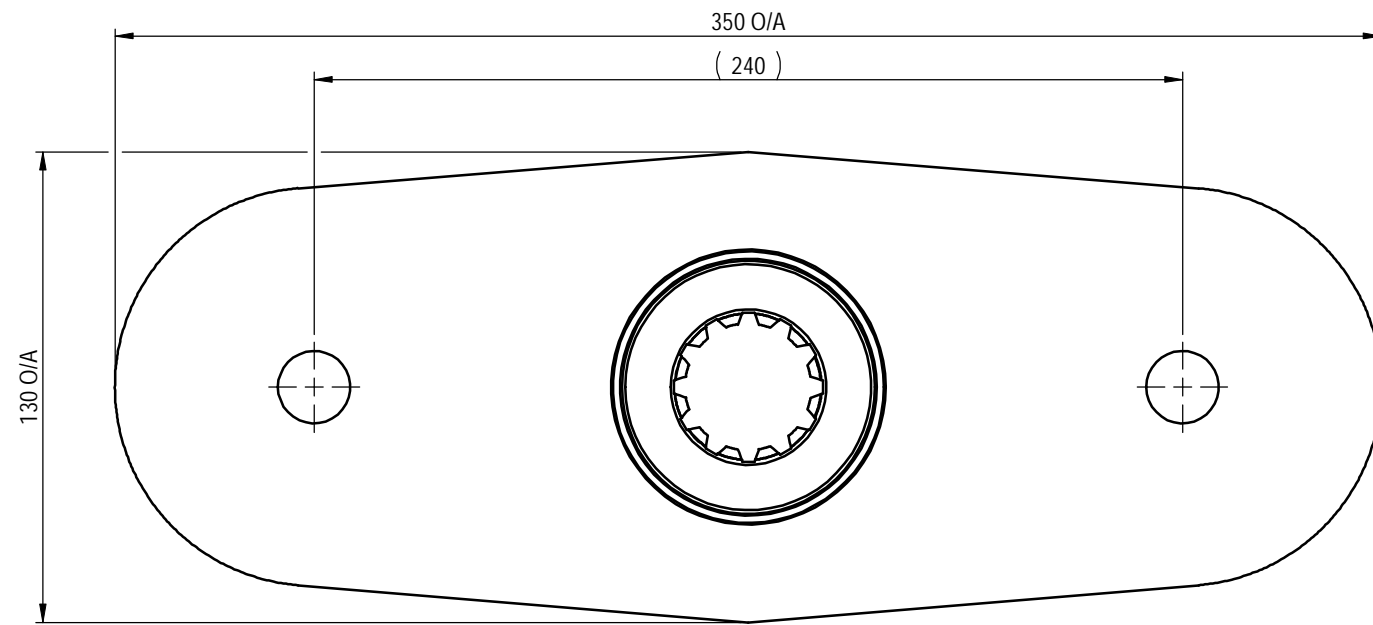
THIS DRAWING IS PRIVATE AND CONFIDENTIAL AND REMAINS THE PROPERTY OF FIELDQUIP.  
RETURNED UPON REQUEST. IT MUST NOT BE COPIED OR LOANED WITHOUT THE CONSENT OF FIELDQUIP.

SCALE	1:10	U.N.O
Design	AWP	Aug 13
Drawn	AWP	21.09.13
Check	D.M.	25.09.13
Appd.	D.M.	25.09.13

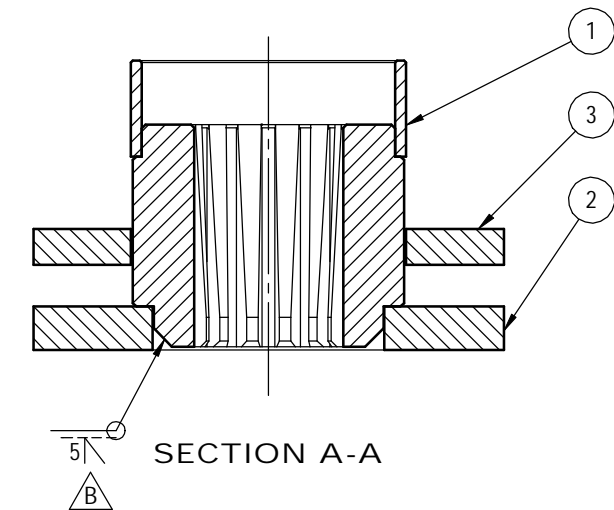
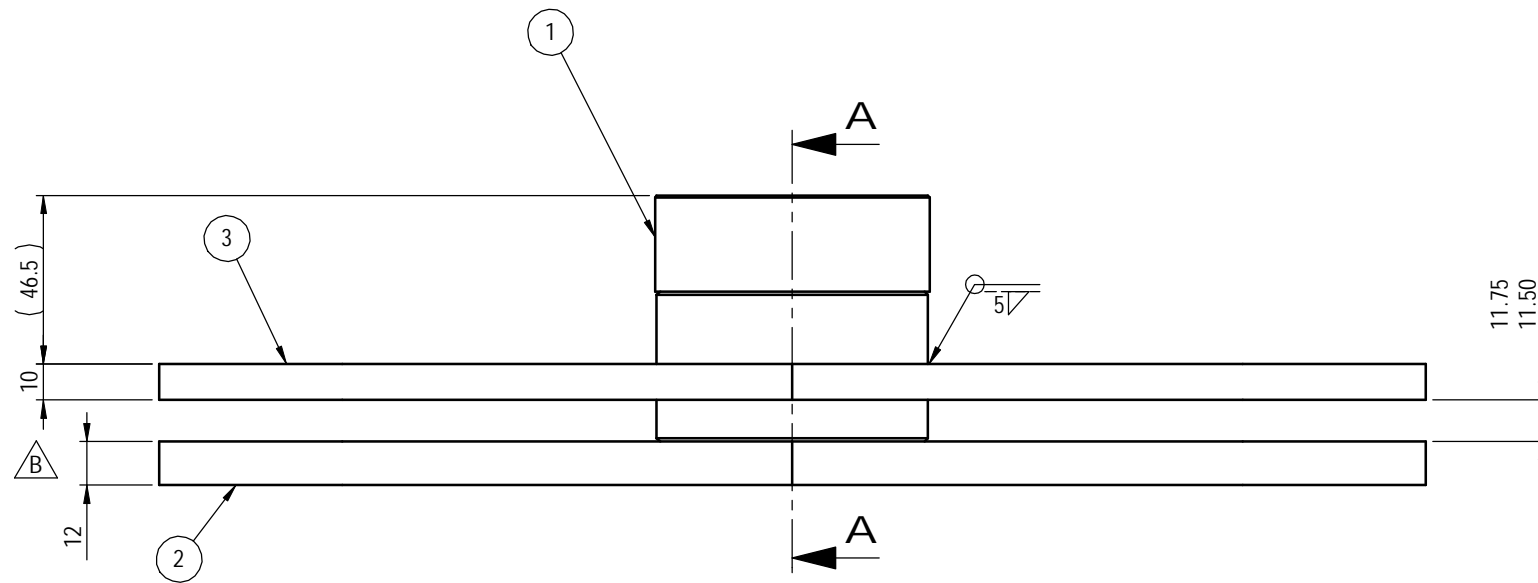
DECK ASSEMBLY	
1200 SABRE SLASHER MkII	

3rd ANGLE PROJECTION U.N.O.	
Fieldquip Drawing Number	REV
SBR12-200	A

ITEM NO.	QTY.	PART NUMBER	DESCRIPTION	DRAWING NUMBER	WEIGHT IN kg	VENDOR	VENDOR PART No
1	1	HBB3701_S	GEARBOX HUB	Purchased	1.53	Bare Co	B3701
2	1	1848J3-40	LOWER BLADE BAR 1200	1848J3-40	3.27		
3	1	1848J2-40	TOP BLADE BAR 1200	1848J2-40	2.62		



ISOMETRIC VIEW



SECTION A-A

DO NOT SCALE  
IF IN DOUBT - ASK WEIGHT 7421.0 GMS

Sheet 1 of 1

No.	Description	DWN	CHK	APPD	DATE
P1	PRELIMINARY DRAWING	-	-	-	-
A	APPROVED FOR CONSTRUCTION	-	-	-	-
B	DIMENSIONS CLARIFIED, DESCRIPTION UPDATED, WELD NOTE MOVED	AWP	MG	G.R.	27.06.16

199 Bridge Street, Oakey, Qld, 4401

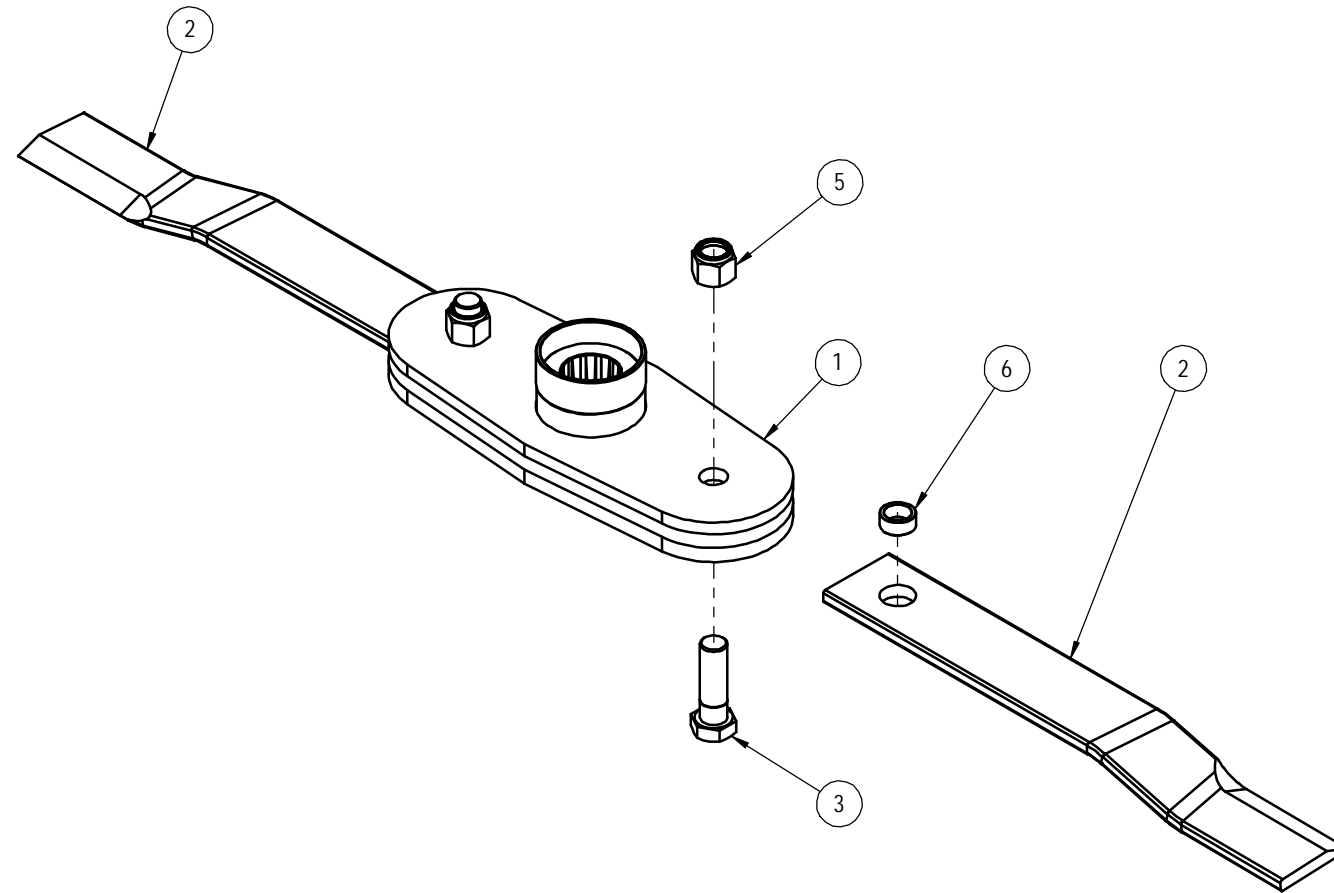
THIS DRAWING IS PRIVATE AND CONFIDENTIAL AND REMAINS THE PROPERTY OF FIELDQUIP.  
RETURNED UPON REQUEST. IT MUST NOT BE COPIED OR LOANED WITHOUT THE CONSENT OF FIELDQUIP.

SCALE	1:2	U.N.O
Design	Walsh	-
Drawn	AWP	23.09.13
Check	D.M.	30.09.13
Appd.	D.M.	30.09.13

1200 BLADE CARRIER
1200 SABRE SLASHER MkII

3rd ANGLE PROJECTION U.N.O.	A3
Fieldquip Drawing Number	REV
SBR12-100	B

ITEM NO.	QTY.	PART NUMBER	DESCRIPTION	DRAWING NUMBER	WEIGHT IN kg	VENDOR	VENDOR PART No
1	1	SBR12-100	1200 BLADE CARRIER	SBR12-100	7.42		
2	2	1572	SLASHER BLADE 1572	Purchased	2.18	PRATCO	SBH405
3	2	HHB $\frac{3}{4}$ UNF-16T2 $\frac{1}{2}$	$\frac{3}{4}$ " UNF x 2 $\frac{1}{2}$ " HEX BOLT	Purchased	0.20	MAPTCO	E273
4	2	WF20MHT	M20 HIGH TENSILE FLAT WASHER	Purchased	0.02	TBA	TBA
5	2	HNN $\frac{3}{4}$ UNF	$\frac{3}{4}$ " UNF HEX NYLOC NUT	Purchased	0.06	MAPTCO	TBA
6	2	BSH251911	BLADE BUSH	Purchased	0.02	TBA	TBA



DO NOT SCALE  
IF IN DOUBT - ASK WEIGHT 12329.7 GMS

Sheet 1 of 1

No.	Description	DWN	CHK	APPD	DATE
P1	PRELIMINARY DRAWING	-	-	-	-
A	APPROVED FOR CONSTRUCTION	-	-	-	-
B	BLADE BOLT WASHER REMOVED	AWP	MG	G.R.	24.06.16

199 Bridge Street, Oakey, Qld, 4401

**FIELDQUIP** *...smarter gear ...smarter care*  
Australian owned family business

THIS DRAWING IS PRIVATE AND CONFIDENTIAL AND REMAINS THE PROPERTY OF FIELDQUIP.  
RETURNED UPON REQUEST. IT MUST NOT BE COPIED OR LOANED WITHOUT THE CONSENT OF FIELDQUIP.

SCALE	1:5	U.N.O
Design	D.M.	Aug 13
Drawn	AWP	21.09.13
Check	D.M.	25.09.13
Appd.	D.M.	25.09.13

1200 BLADE ASSEMBLY
1200 SABRE SLASHER MkII

3rd ANGLE PROJECTION U.N.O.	A3
Fieldquip Drawing Number	REV
SBR12-800	B