

INDEX

	PAGE
OPERATIONAL SAFETY INSTRUCTIONS	1 - 3
OPERATING INSTRUCTIONS	4 - 7
BODY COMPONENTS LINKAGE	8
BODY COMPONENTS TRAILING	9
WHEEL OPTIONS	10
HYDRAULIC CYLINDER & ROCKER (TRAIL ONLY)	11
CENTRE MAIN GEARBOXES S150	12
SIDE GEARBOX B/CO 100 HP (240 ONLY)	13
SIDE GEARBOX S150	14
CLUTCH ASSEMBLY Main	15
INTERMEDIATE FLANGE ASSY. 1410	16
INTERMEDIATE FLANGE ASSY. W/SCHD (360 ONLY)	17
DRAW BAR ASSEMBLY (TRAIL)	18
FRONT DRIVE SHAFT ASSEMBLY (LINKAGE)	19
FRONT DRIVE SHAFT ASSEMBLY (TRAIL)	20
CUTTING HEAD ASSEMBLY (240 2 BLADE)	21
CUTTING HEAD ASSEMBLY (300 & 360 TRI. 3 BLADE)	22
OWNERS NOTES / WARRANTY CARD	23

OPERATING INSTRUCTIONS for PASTURE TOPPER

Getting the best of your Superior

TRAILING SLASHERS

SETTING UP :-

INITIAL START UP

Check Gearboxes for oil

::Recommended OIL

:- 85w -- 140 EP GEAR OIL

Grease all grease points

:: Recommended Grease

:- All Purpose Grease EPL 2

See Maintenance Schedule Attached

ATTACHING TRACTOR

Connect tractor to Draw bar, attach all Hydraulic Hoses to correct hydraulic ports. (See Hydraulic Cylinder Layout)

Connect Driveshaft to P.T.O. on Tractor and Clutch / Gearbox on Slasher, make sure Clamp Bolts and or Q.r. Pins are located in respective grooves. (Failure to do this will result in Driveshaft Damage).

Tractor DRAW BAR / P.T.O. can vary in length. CHECK OPERATIONAL LENGTH OF DRIVESHAFT BEFORE OPERATING SLASHER.

NOTE -: Check length of Driveshaft at the highest and lowest positions of Hydraulic Cylinder travel.

The Driveshaft requires Sliding Movement of approx. 75 mm (3") to avoid bottoming or pulling apart at maximum operational lengths.

TRAILING SLASHERS ARE FITTED WITH 2 (TWO) D/SHAFTS....on DRAW BAR.

1 IS A FIXED LENGTH D/SHAFT (Connects to TRACTOR & Jack Shaft) the other is a TELESCOPIC Jack Shaft (Connects from Fixed Shaft to Clutch).

ADJUSTMENT IS CARRIED OUT ONLY ON TELESCOPIC Jack Shaft (Check Sliding Movement before Operating Slasher)

SETTING UP SLASHER

Your Superior Slasher will cut cleanest and requires less H.P. to drive when the front of the Slasher is set lower than the rear. Use the Tie Rods to set the rear wheel height, this sets the correct stance of the Slasher, Lower at the front, higher at the rear

Your Superior Slasher is fitted with stepped or suction lift blades as standard, these will require approx. 12 mm (1/2") lower setting at the front than the rear.

Adjust this setting to achieve the desired cutting result for your conditions.

HYDRAULIC CYLINDER

1) The Hydraulic Cylinder is used in conjunction with depth stop collars.

2) Raise the Slasher to extend the Cylinder to maximum, Fit approx. amount of depth stop collars, so as to attain correct cutting height

3) Lower the Slasher onto depth stops check height, if too low add more depth stops collars, if too high remove depth stop collars to attain correct cutting height.

4) This allows Slasher to be able to be raised to maximum height, and ensures that correct cutting height is always maintained.

CAUTION -: DRIVESHAFT LENGTH Should be checked at this point before operating **Check length of Jack Shaft at the highest and lowest positions of Hydraulic Cylinder travel.**

The Jack Shaft requires Sliding Movement of approx. 70 mm (2 3/4") to avoid bottoming or pulling apart at maximum operational lengths.

FAILURE TO DO THIS will result in DAMAGE to DRIVESHAFT, requiring costly repairs.

LINKAGE PASTURE TOPPERS

ATTACHING TRACTOR

Connect tractor to T.P.L. lower link pins, the mower is fitted with a stepped pin which will fit either cat 1, 22 mm (7/8") or cat 2, 30 mm (1 1/8"). Make sure tractor is fitted to correct size and place lynch pin in hole end of pin.

Tighten Anti-Sway Bars / Chains (must be firm, not rigid)

Connect Top Link to Tower.

Connect Driveshaft to P.T.O. on Tractor and Clutch / Gearbox on Mower, make sure Clamp Bolts and or Q.r. Pins are located in respective grooves. (Failure to do this will result in Driveshaft Damage).

Tractor Lift Arms can vary in length. CHECK OPERATIONAL LENGTH OF DRIVESHAFT BEFORE OPERATING MOWER.

Check length of Driveshaft at the highest and lowest positions of Tractor Lift arms.

The Driveshaft requires Sliding Movement of approx. 100 mm (4") to avoid bottoming or pulling apart at maximum operational lengths.

Caution Keep Sharp Cornering to a Minimum .. failure to observe this will result in undue wear & tear on Drive Shaft Components.

Caution Entering & Exiting Steep Gully's or Steep Ridges may result in Jack Shaft Bottoming out or Coming Apart, Check Jack Shaft Length before using Slasher in Extreme Conditions.

SETTING UP SLASHER

Your Superior Topper will cut cleanest and requires less H.P. to drive when the front of the Topper is set lower than the rear.

Your Superior Topper is fitted with stepped suction lift blades as standard, these will require approx. 12 mm (1/2") lower setting at the front than the rear.

Adjust this setting to achieve the desired cutting result for your conditions.

SETTING UP TOPPER WITH REAR CASTOR WHEELS

Use the rear wheel adjustment to set the correct stance of the mower, Lower at the front, higher at the rear.

Adjust the Top Link to allow the mower to hinge at the tractor lower lift arms, so that the mower can follow reasonable ground contours. If top link is too short Topper will tend to lift off the ground resulting in an uneven cut.

CAUTION If top link is too long it may allow the mower to lift too high at the front which will cause damage to DRIVESHAFT safety covers or will result in bending DRIVESHAFT, requiring costly repairs.

OPERATION

Your Superior Topper will be set up the factory to suit your tractor's particular P.T.O. either 540 rpm or 1000 rpm.

For best mowing results maintain correct P.T.O. speeds.

In heavy going or awkward areas change back a gear or reduce forward speeds rather than reduce P.T.O. speed by throttling back.

Caution Entering & Exiting Steep Gully's or Steep Ridges may result in Drive Shaft Bottoming out or Coming Apart, Check Drive Shaft Length before using Slasher in Extreme Conditions.

TRAILING & LINKAGE TOPPER

CLUTCH SETTINGS

Clutch settings are best set up in conditions that the Slasher is operating in.

- 1) Operate the Slasher in reasonably heavy conditions for approx. 20 to 30 minutes.
- 2) Disengage P.T.O., Switch Engine Off, Remove Key from Ignition.
- 3) Check temperature of clutch by placing hand on clutch, if clutch is warm to the touch it is about right, if it is hot to the touch the clutch has been slipping excessively and adjustment is necessary.

CLUTCH ADJUSTMENT

1) Undo lock nuts and tighten (increase spring tension) or loosen (decrease spring tension) each adjusting nut $\frac{1}{2}$ to 1 turn.

2) Make sure each of the nuts is adjusted in turn.

3) DO UP LOCK NUTS

4) REFER BACK TO (1) CLUTCH SETTINGS

CAUTION If clutch is too tight (cold) and there is no opportunity for clutch slip, costly damage to components may result.

GENERAL MAINTENANCE

It is important that after approx. 30 to 60 minutes operation you should stop the Mower / Slasher and check all bolts and nuts for tightness. While all bolts are tightened on assembly, impact and working loads cause bedding in of components and early attention to all bolt and nuts will ensure trouble free operation of your Mower / Slasher.

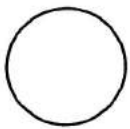
Particular attention should be paid to clamp bolt, clutch bolts, cutting head bolts, blade bolts and nuts, as well as wheel nuts, bearings and castor assembly components.

Early inspection of components after initial start up, and adherence to the lubrication recommendations, will greatly assist in maintaining the durability of your investment.

READ MAINTENANCE SCHEDULE for CORRECT LUBRICATION INTERVALS

WARRANTY

Your Superior Product is covered by **Manufacturers Warranty of 180 days** against faulty parts and or workmanship. Warranty does not cover operator abuse, or damage to the cutting head assembly (head flats, blades etc.) Should a warranty type problem develop with your new mower **contact your local dealer** who will refer the problem to SUPERIOR EQUIPMENT. Items for any warranty inspection must be **forwarded on a pre-paid basis. Goods supplied are on a charge basis, subject to warranty inspection.**



GREASE
TWICE DAILY



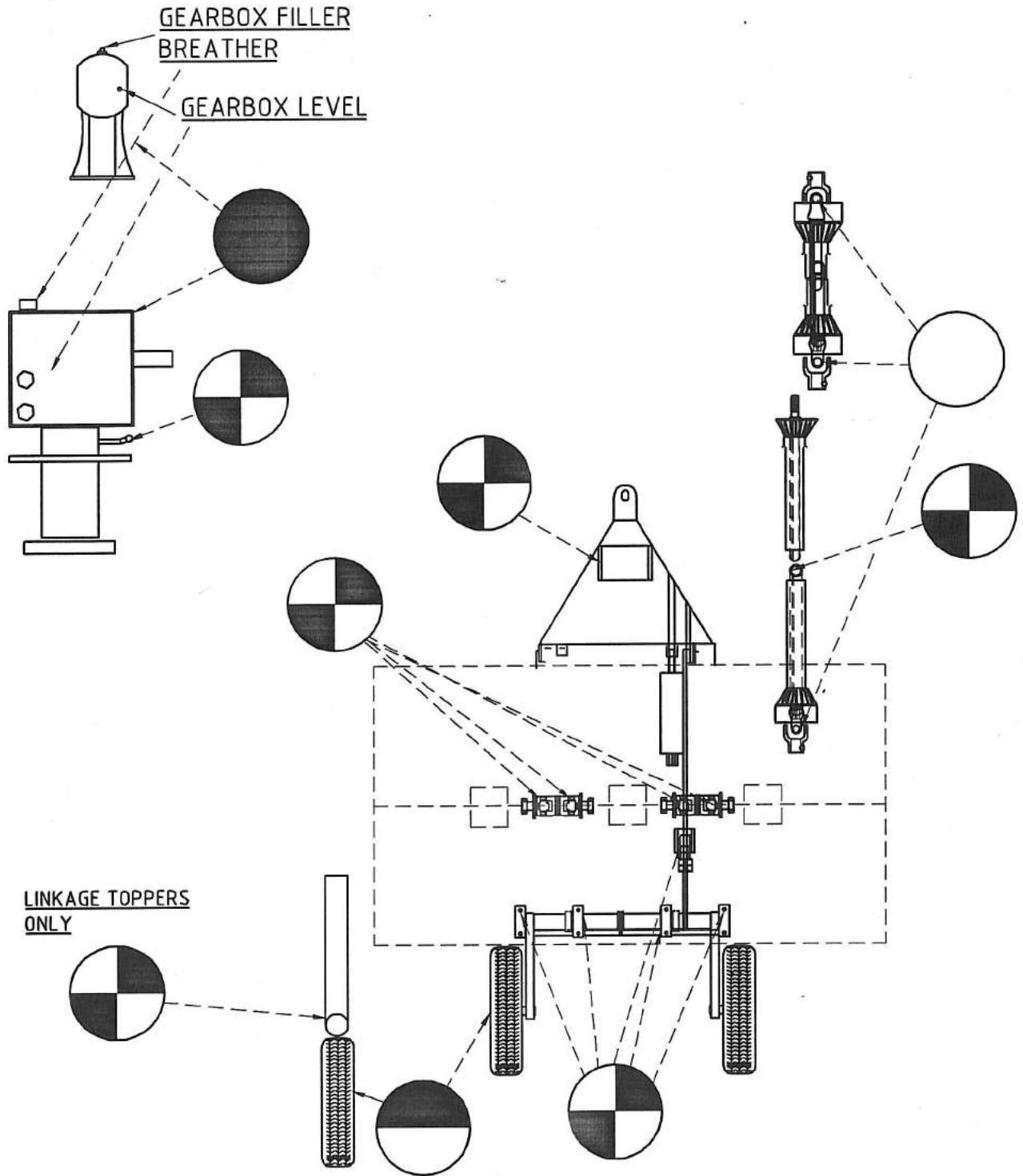
GREASE
ONCE WEEKLY

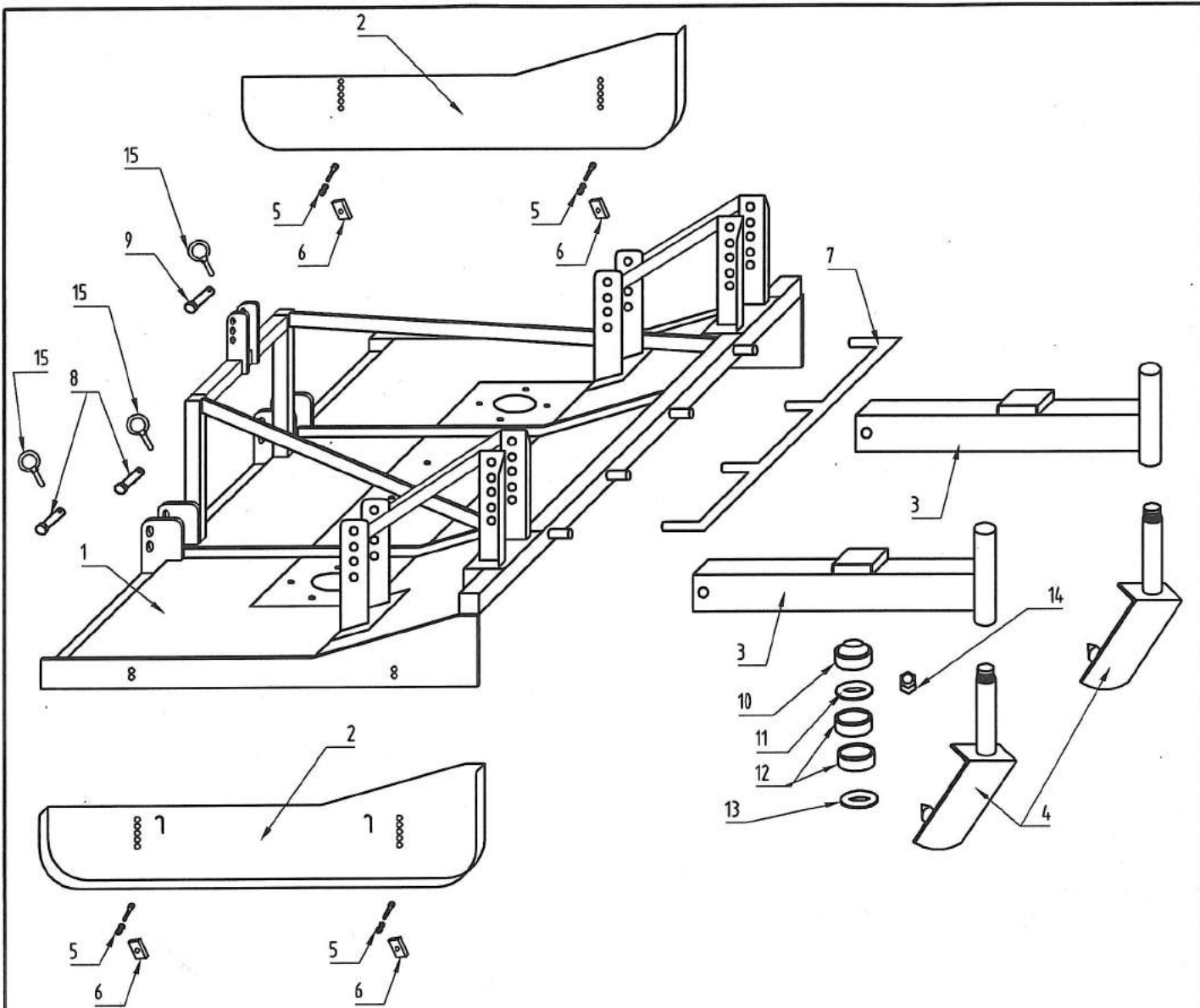


GREASE
DAILY



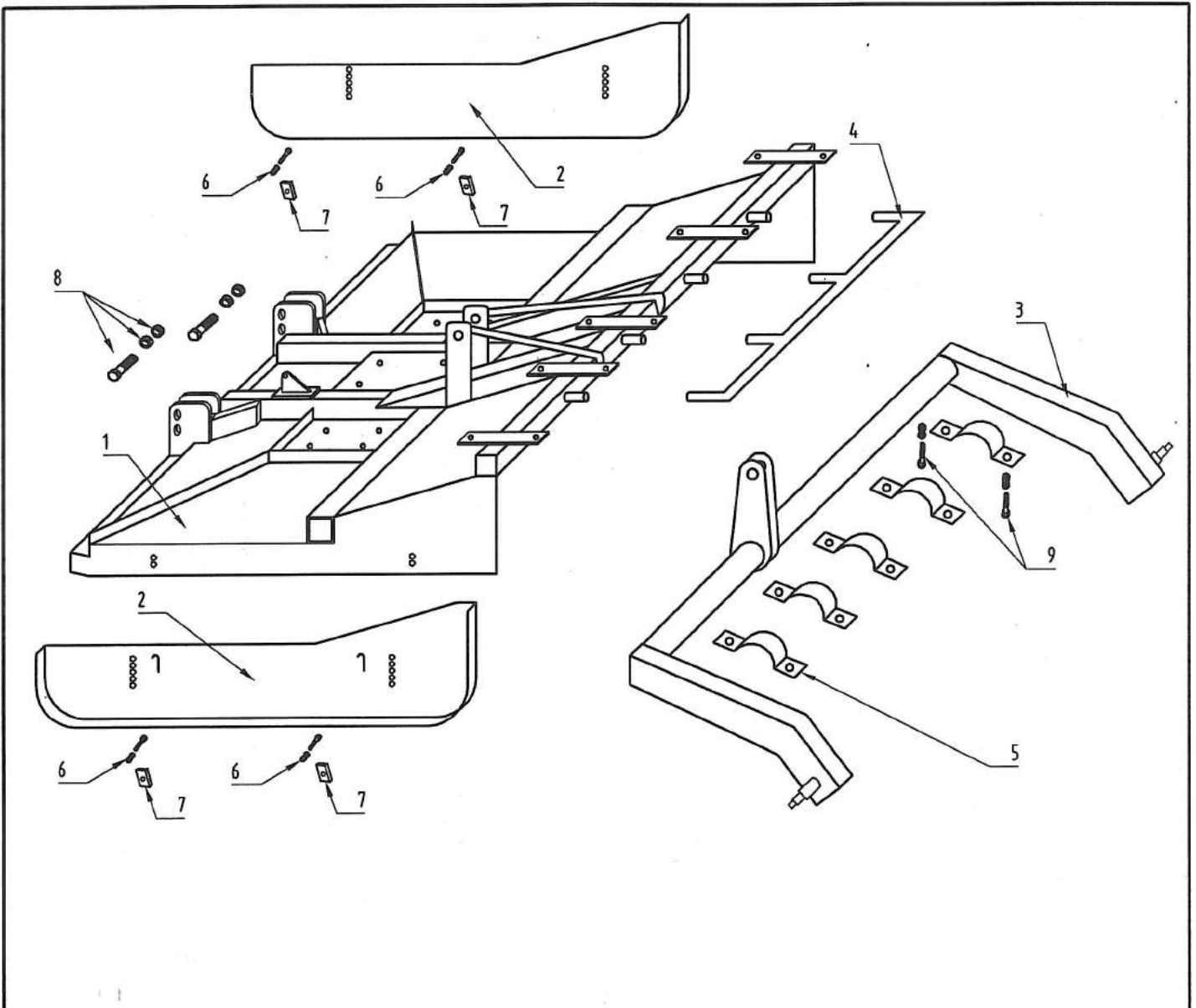
CHECK OIL DAILY
85W - 140 EP GEAR OIL
CHANGE EVERY 6 MONTHS





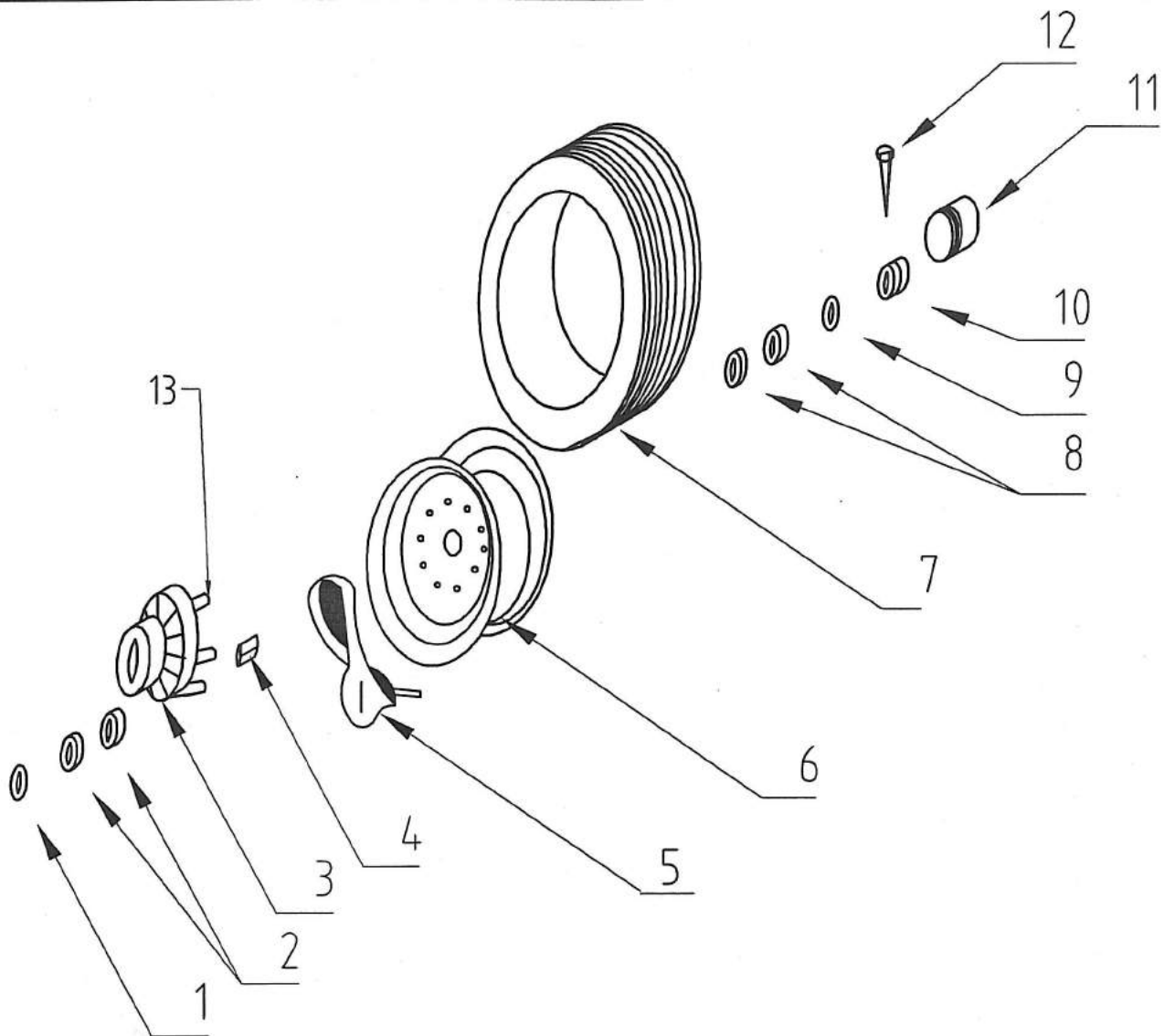
LX PASTURE TOPPER LINKAGE BODY

ITEM No	PART No PL2400	PART No PL300	PART No PL360	DESCRIPTION	No OFF
1	S2831	S2791	S2783	MAIN BODY	1
2	S2833	S2793	S2784	ADJUSTABLE SKIDS LH or RH Advise	1
3	S2828	S2794	S2785	CASTOR BEAMS	2
3	N/A	optional	S2786	CASTOR BEAMS Suit 16" L/C optional	2
4	S4115	S2272	S2272	CASTOR FORKS	2
4	N/A	optional	S2787	CASTOR FORK Suit L/C Wheel 16" optional	2
5	S3539	S3539	S3539	BOLT, NUT & S/WASHER	2
6	S5629	S5629	S5629	SKID REINFORCING TAB	2
7	S2827	S2796	S2778	REAR SAFETY BAR	1
8	S7008	S7008	S7008	BOTTOM LINKAGE PIN "CAT 2"	1
9	S4132	S4132	S4132	TOP LINKAGE PIN "CAT 2"	1
10	S4097	S4097	S4097	DUST CAP STEEL	1
10	S4127	S4127	S4127	DUST CAP Plastic Optional	1
11	S4234	S4234	S4234	WASHER H/D 1"	1
12	S4094	S4094	S4094	BEARING	2
13	S4093	S4093	S4093	WASHER Machined	1
14	S4095	S4095	S4095	NYLOC NUT	1
15	S4011	S4011	S4011	LYNCH PIN	3



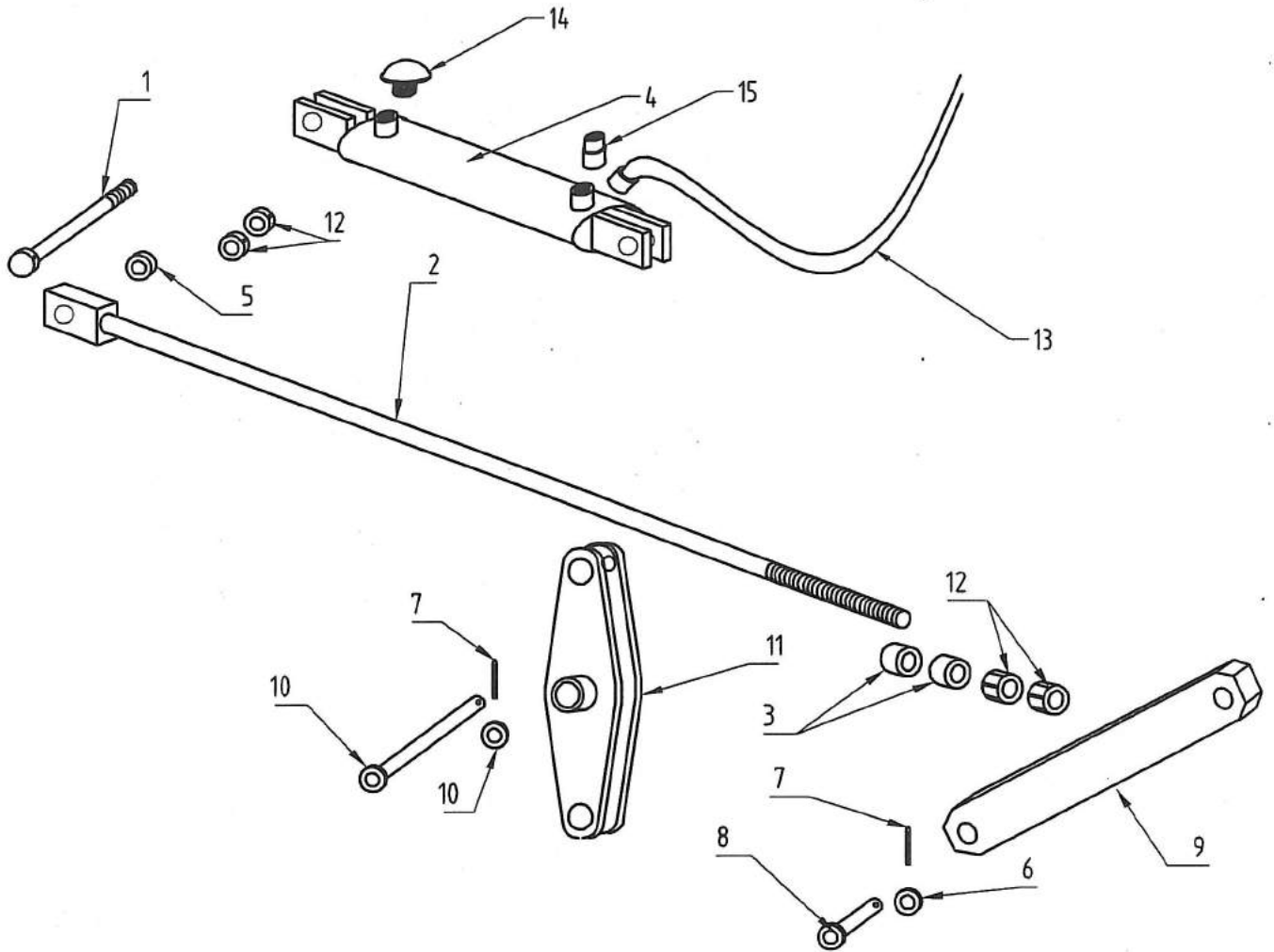
TX PASTURE TOPPER TRAILING BODY

ITEM No	PART No PTX300	PART No PTX360	DESCRIPTION	No OFF
1	S2811	S2780	MAIN BODY	1
2	S2793	S2784	ADJUSTABLE SKIDS LH or RH Advise	1
3	S2812	S2781	REAR AXLE	1
4	S2796	S2778	REAR SAFETY BAR	1
5	S2234	S2234	SADDLE 4"	5
6	S3539	S3539	BOLT, NUT & S/ WASHER	4
7	S5629	S5629	SKID REINFORCING TAB	4
8	S3579	S3579	BOLT & LOCK NUTS 1" x4'	2
9	S3551	S3551	BOLT, NUT & S/WASHER	2



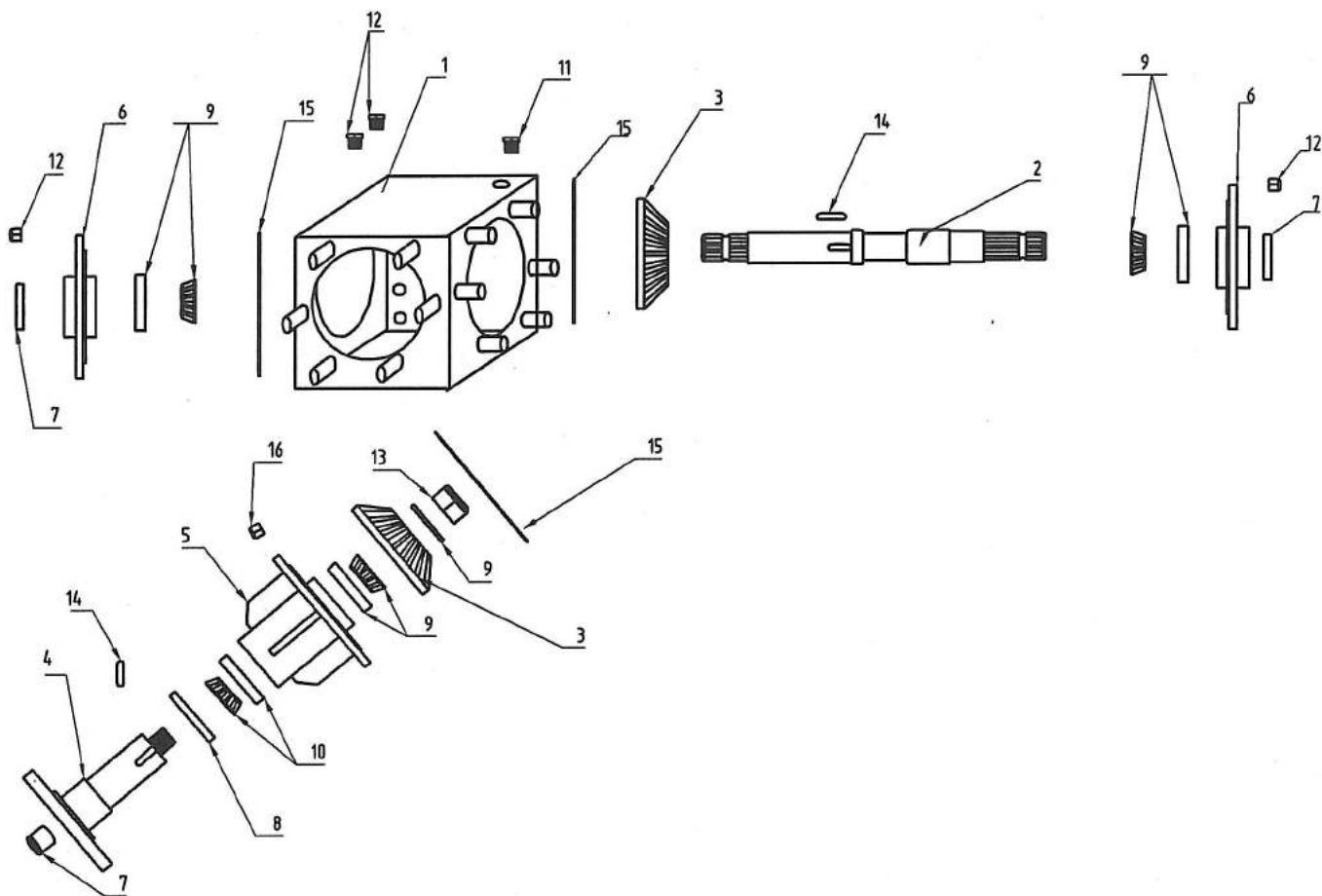
WHEEL OPTIONS :- 10", 14", 16"

ITEM No.	PART No. 520 x10	PART No. 600 x 14	PART No. 750 X 16	DESCRIPTION	QTY. OFF
1	S2222	S2222	S1691	SEAL	1
2	S2223	S2223	S1689	INNER BEARING	1
3	S2224	S2224	S1688	HUB Inc. Studs	1
4	S2158	S2158	S1694	NUTS To Suit Hub	AS REQ.
5	S2151	S2226	S1697	TUBE	1
6	S2273	S2227	S1695	RIM (NB:-10" Rim is Alloy)	1
7	S2152	S2228	S1696	TYRE	1
8	S2229	S2229	S1690	OUTER BEARING	1
9	S4226	S4226	S4227	WASHER	1
10	S2231	S2231	S1811	CASTELATED NUT	1
11	S2232	S2232	S1692	DUST CAP	1
12	S2157	S2157	S1693	STUDS To Suit Hub	AS REQ.
13	S2233	S2233	S2219	COTTER PIN	1
14	S4629			WHEEL(Alloy) Complete 10" Monofilled	1



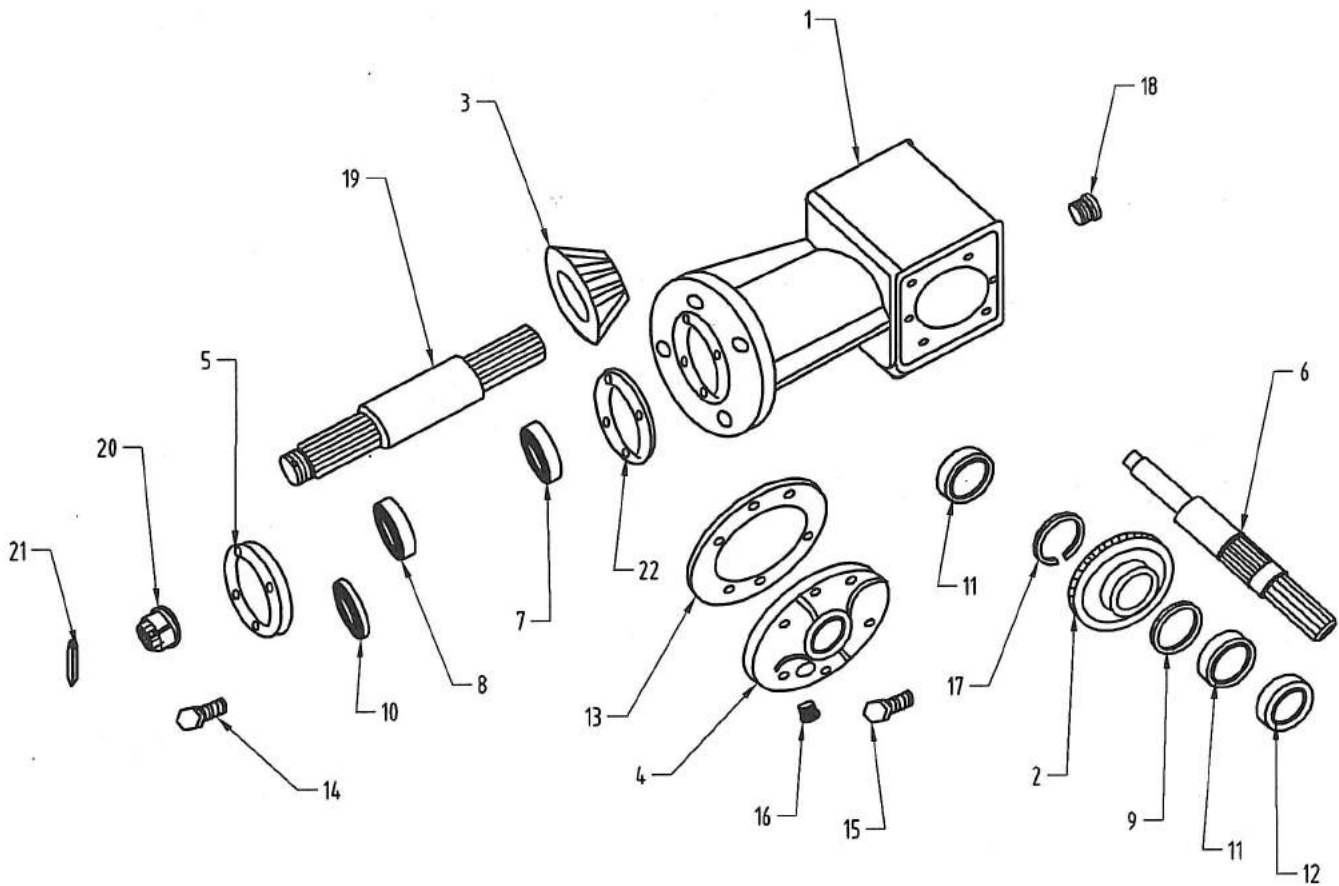
PASTURE TOPPER HYDRAULIC LIFT ROCKER & RAM ASSEMBLY

ITEM	PART No. PTX240	PART No. PTX300	PART No. PTX360	DESCRIPTION	No.OFF
1	S3583	S3583	S3583	BOLT & NUT ASSY 1 UNC X 6	1
2	S2824	S2814	S2759	LEVELLING TIE ROD (ADVISE LENGTH)	1
3	S2243	S2243	S2243	SPACERS	4
4	S2240	S2240	S2244	HYDRAULIC CYLINDER	1
5	S2243	S2243	S2243	SPACER BUSH	2
6	S2245	S2245	S2245	WASHER BRT 1"	2
7	S4054	S4054	S4054	COTTER PIN	3
8	S2257	S2257	S2257	LINK PINS 1" X 2 1/2"	2
9	S2253	S2253	S2253	CONNECTOR BAR	1
10	S2466	S2466	S2466	ROCKER PIN & WASHER 1 1/4"	1
11	S2252	S2252	S2252	ROCKER BOX	1
12	S2255	S2255	S2255	LOCK NUTS 1"	2
13	S2650	S2650	S2650	HYDRAULIC HOSE MAIN TO TRACTOR	1
14	S2639	S2639	S2639	HYDRAULIC BREATHER	1
15	S2647	S2647	S2647	HYDRAULIC NIPPLE 1/2BSP..3/4UNO	1



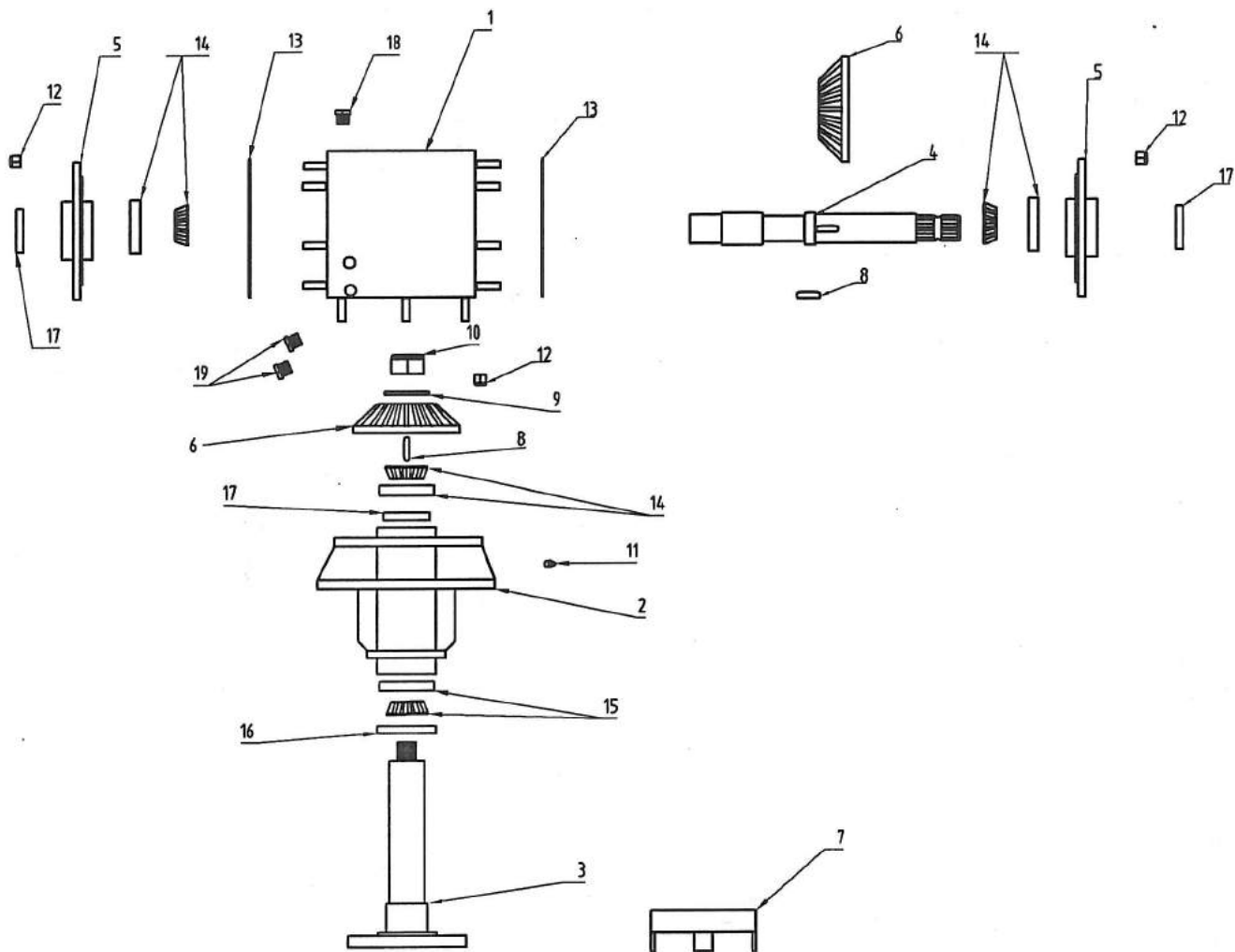
PASTURE TOPPER 240, 300, 360, MAIN CENTRE GEARBOX

ITEM	PART No. 240	PART No. 300	PART No. 360	DESCRIPTION	No.OFF
1	S2002	S2002	S2002	GEARBOX HOUSING	1
2	S2995	S2006	S2007	CROSS SHAFT (1 3/4 X 20 SPLINE)	1
3	S1104	S1104	S1005	GEAR & PINION SET (ADVISE RATIO)	1
3	S4618 / 19	N/A	N/A	GEAR & PINION SET (2 :1 RATIO)	1
4	S1009	S1009	S1009	INPUT SHAFT	2
5	S1006	S1006	S1006	INPUT CARTRIDGE	2
6	S2003	S2003	S2003	ENDCAPS	2
7	S1015	S1015	S1015	INNER SEAL	2
8	S1012	S1012	S1012	OUTER SEAL	2
9	S1010	S1010	S1010	INNER BEARING	3
10	S1011	S1011	S1011	OUTER BEARING	1
11	S1018	S1018	S1018	BREATHER FILLER PLUG	1
12	S1017	S1017	S1017	DRAIN / LEVEL PLUG	2
13	S1007	S1007	S1007	NYLOC NUT	1
14	S1016	S1016	S1016	KEY	2
15	S1004	1004	1004	SHIMS (0.005 & 0.010 ADVISE No. REQ.)	6
16	S1003	S1003	S1003	NYLOC NUTS 1/2 UNF	18
17	S4103	S4103	S4103	CLUTCH BUSH	1



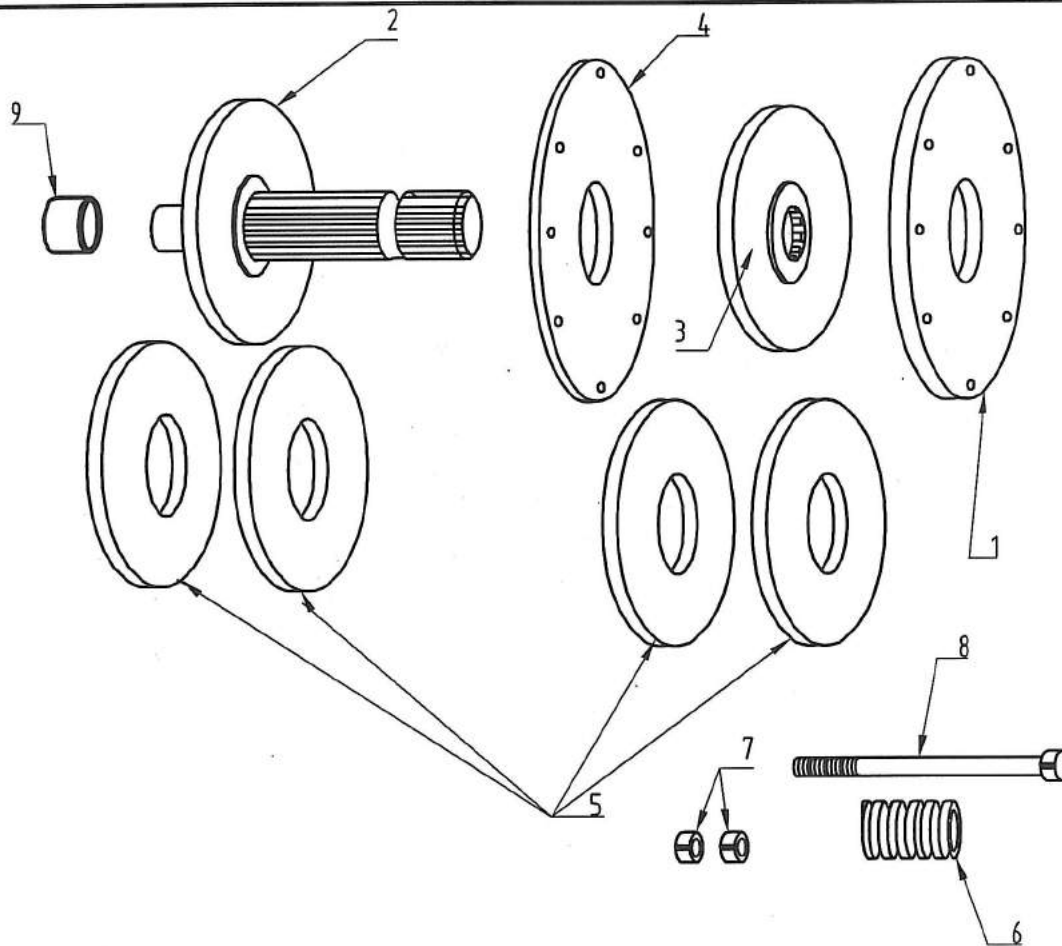
PASTURE TOPPER SIDE GEARBOX B/Co 100 HP (240 only)

ITEM No.	PART No. 240	DESCRIPTION	QTY. OFF
1	S1881	GEARBOX HOUSING	1
2	S1875	GEAR	1
3	S1892	PINION	1
4	S1882	FRONT END CAP	1
5	S1886	OUTPUT SEAL HOUSING	1
6	S1889	INPUT SHAFT	1
7	S1894	OUTPUT BEARING Top	1
8	S1895	OUTPUT BEARING Bottom	1
9	S1896	BEARING SPACER Input	1
10	S1879	OUTPUT SEAL	1
11	S1891	BEARING INPUT Front & Rear	2
12	S1876	SEAL INPUT FRONT	1
13	S1885	SHIM FRONT PLATE	1
14	S1887	SEAL PLATE RET. STUDS	4
15	S1883	END PLATE STUDS	8
16	S1899	LEVEL PLUG	1
17	S1890	CIRCLIP INPUT	1
18	S6206	FILLER / BREATHER PLUG	1
19	S1893	OUTPUT SHAFT	1
20	S6201	NUT CASTELATED W/- WASHER	1
21	S4054	COTTER PIN	1



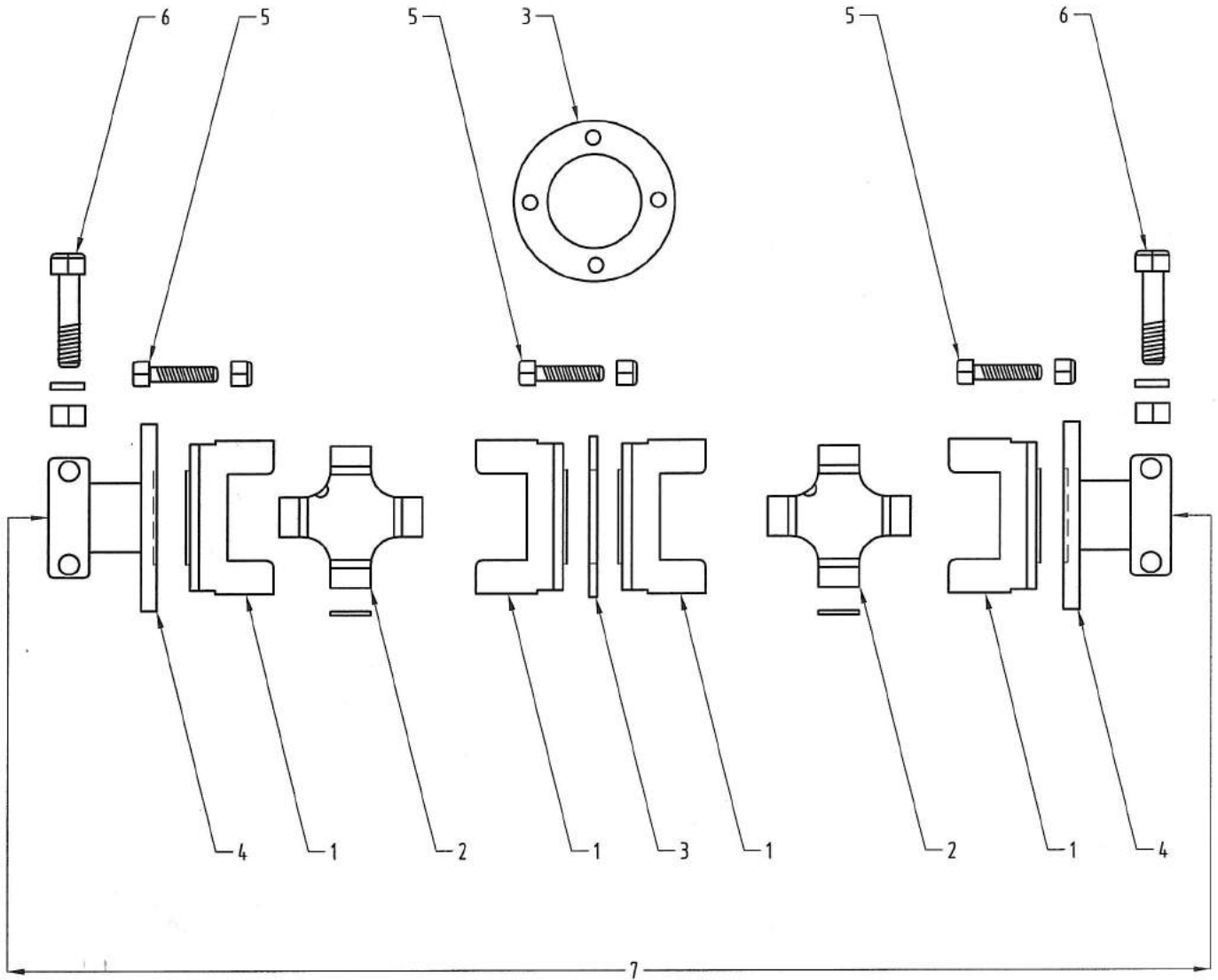
PASTURE TOPPER S150 SIDE GEARBOX

ITEM	PART No. PTX300	PART No. PTX360	DESCRIPTION	No.OFF
1	S3002	S3002	GEARBOX HOUSING	1
2	S2882	S2882	CARTRIGE H/D LONG SERIES	1
3	S2883	S2883	OUTPUT SHAFT	3
4	S2008	S2008	CROSS SHAFT	2
5	S2003	S2003	ENDCAPS	2
6	S1105	S1105	GEAR Ratio1:1	1
6	S1105	S1105	PINION Ratio1:1	1
7	S1019	S1019	GRASS RING	2
8	S1016	S1016	KEY	2
9	S1008	S1008	WASHER PINION	1
10	S1007	S1007	NYLOC NUT	3
11	S4085	S4085	GREASE NIPPLE	1
12	S1003	S1003	NYLOC NUTS	1
13	S1004	S1004	SHIMS .005 & .010	As Req.
14	S1010	S1010	INNER BEARING	3
15	S2295	S2295	OUTER BEARING	1
16	S2296	S2296	OUTER SEAL	1
17	S1015	S1015	INNER SEAL	1
18	S1018	S1018	BREATHER FILLER PLUG	1
19	S1017	S1017	LEVEL / DRAIN PLUG	2



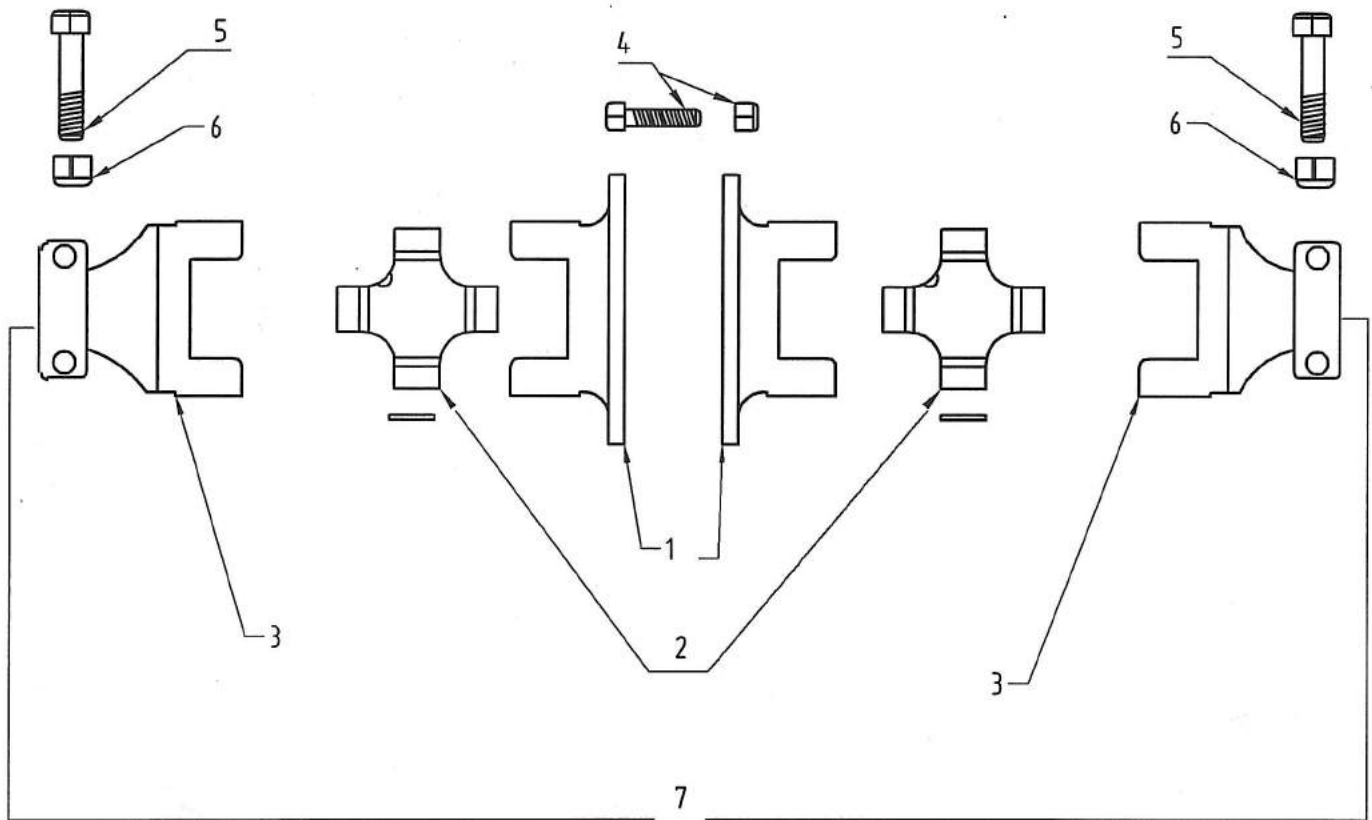
PASTURE TOPPER S2000 CLUTCH ASSEMBLY (1 3/4 X 20 SPLINE)

ITEM	PART No. 240, 300, 360	DESCRIPTION	No.OFF
1	S4026	CLUTCH FRONT PLATE	1
2	S2375	CLUTCH DRIVE PLATE (1 3/4 X 20 SPLINE)	1
3	S2314	CLUTCH SLIDING SPACER (1 3/4 X 20 SPLINE)	1
4	S2332	CLUTCH SPACER PLATE	1
5	S4027	CLUTCH LININGS	4
6	S4100	CLUTCH SPRINGS	8
7	S4102	CLUTCH BOLT NUTS	16
8	S2334	CLUTCH BOLTS	8
9	S4103	CLUTCH BUSH	1
10	S2326	CLUTCH COMPLETE	INC1 - 8



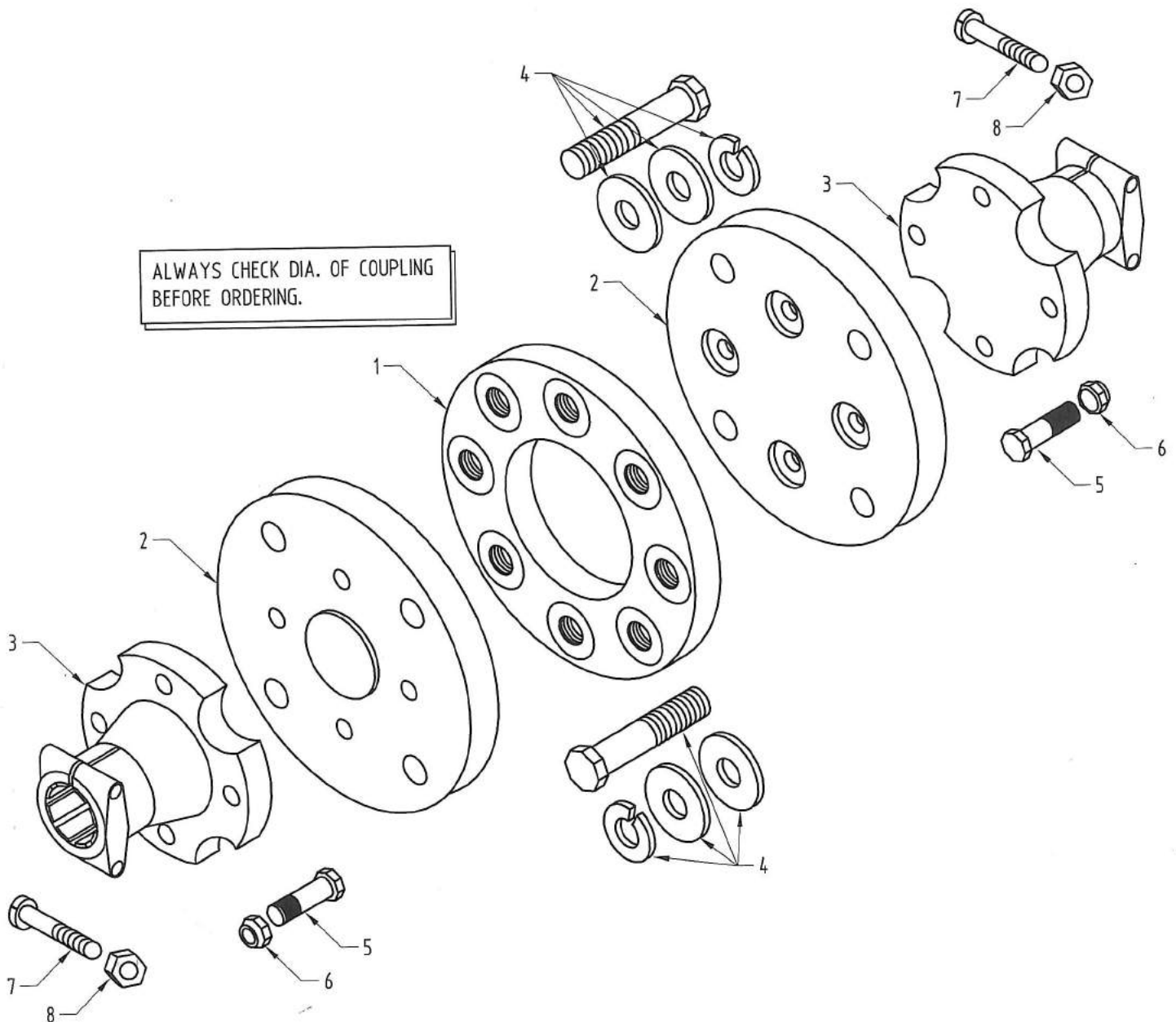
PASTURE TOPPER - 1410 FLANGE ASSY. (1 3/4 X 20 SPLINE)

ITEM No	PART No. 240	PART No. 300	DESCRIPTION	No.OFF
1	S2345	S2345	FLANGE	4
2	S2347	S2347	UNIVERSAL JOINT	2
3	S2352	S2352	LOCATING RING Suits1410 Flange	1
4	S2353	S2353	FLANGE ADAPTOR 1 3/4" x 20 Spline	2
5	S2342	S2342	BOLT, NUT & S/ WASHER	12
6	S5274	S5274	CLAMP BOLT, NUT & S/WASHER	2
7	S2360	S2360	CONNECTOR ASSY. Complete	Inc. 1 - 6



PASTURE TOPPER W/SCHD FLANGE ASSY. (1 3/4 X 20 SPLINE)

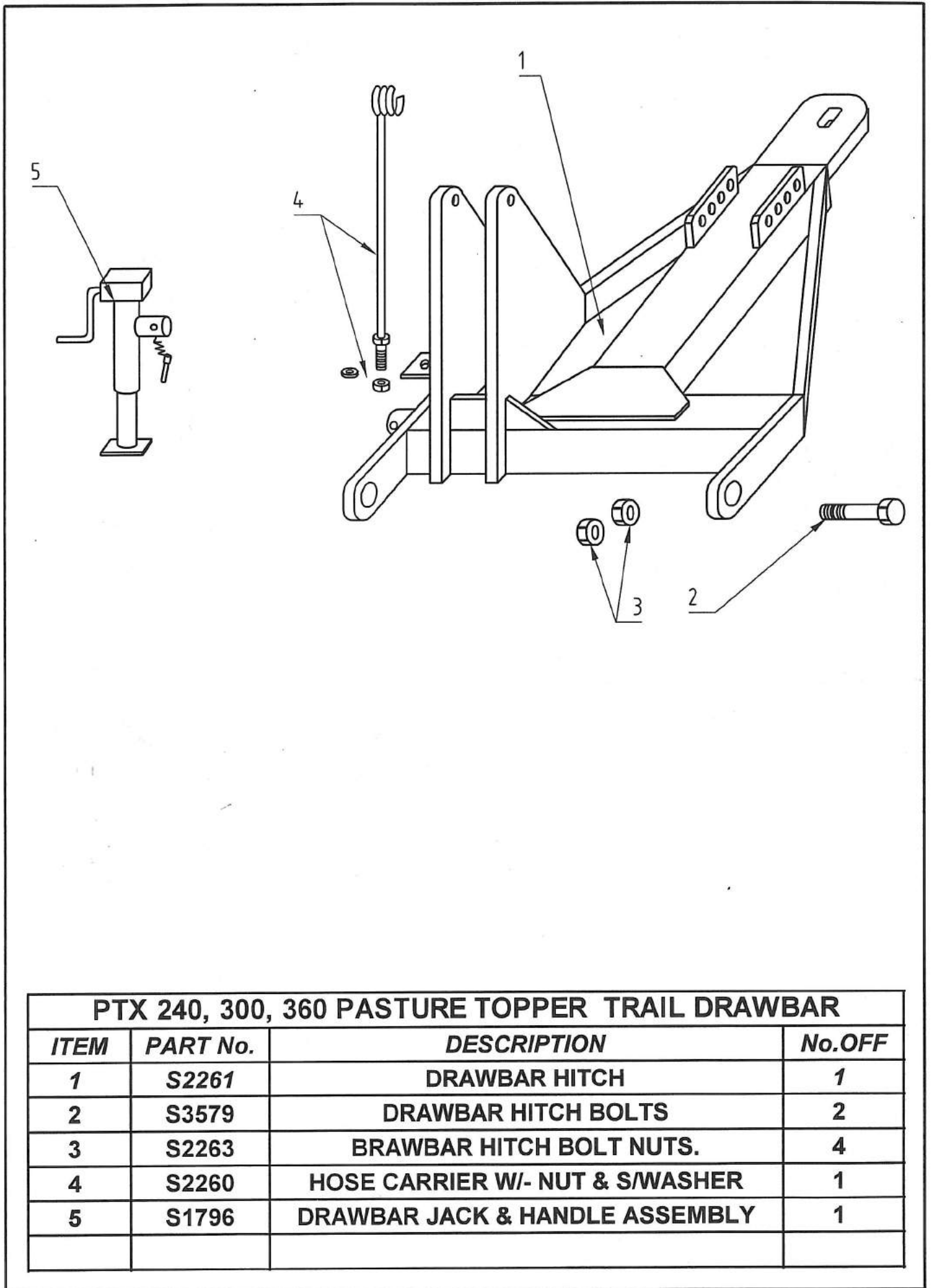
<i>ITEM</i>	<i>PART No. 360 Only</i>	<i>DESCRIPTION</i>	<i>No.OFF</i>
1	S1763	FLANGE YOKE	2
2	S1754	UNIVERSAL JOINT	2
3	S1753	YOKE 1 3/4 x 20 Spline Clamp	2
4	S3293	BOLT & NYLON NUT 5/16 UNF x 1 1/4"	8
5	S3376	CLAMP BOLT 5/8 UNF X 3 1/2	2
6	S1032	NYLOC NUT 5/8 UNF	2
7	S1764	CONNECTOR ASSY. Complete	Inc 1 - 5



RUBBER COUPLING NEW STYLE - SEPTEMBER 2007 - PL2400

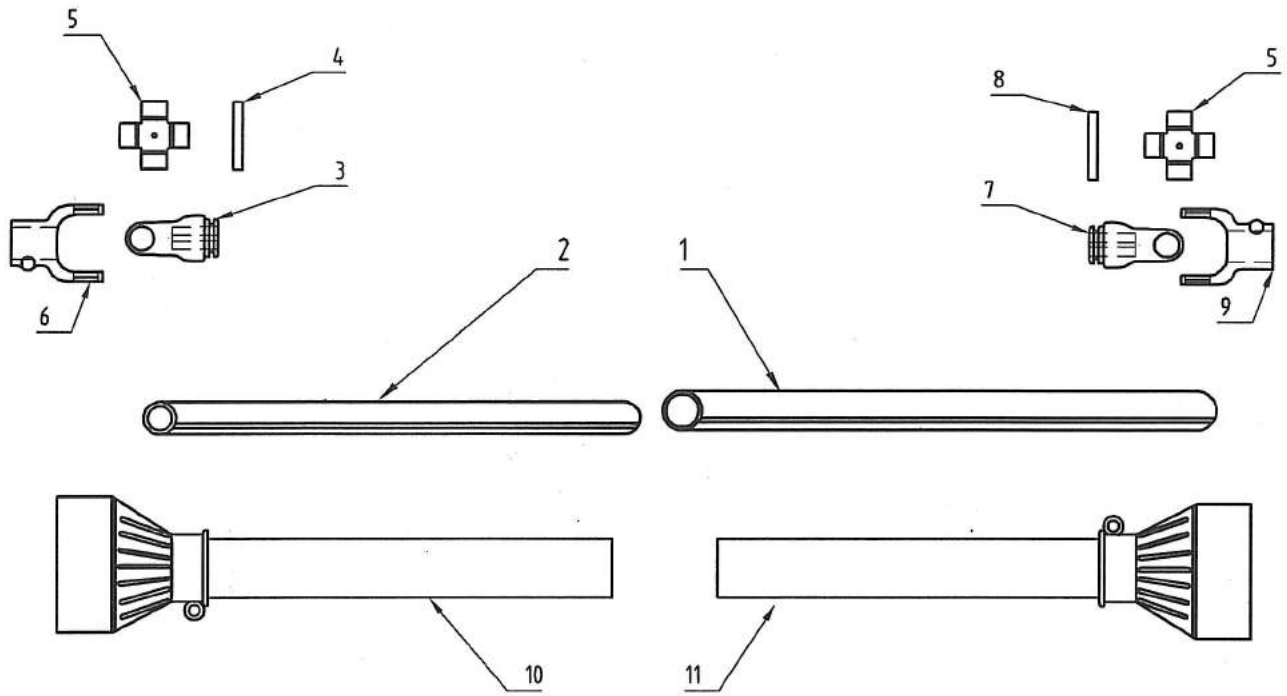
ITEM No.	PART No.	DESCRIPTION	QTY. OFF
1	S4959	FLEXIBLE COUPLING 180mm Dia.	1
2	S4957-1	ADAPTOR PLATE Suits 180mm(BARE CO Gearbox)	2
3	S2353-3	DRIVE FLANGE ADAPTOR 13/4 X 20 SPLINE JAYBEN	2
4	S4958-1	RETAINING BOLT, SPRING & FLAT WASHERS	8
5	S3496	BOLT	8
6	S1027	NYLOCK NUT	8
7	S5274	CLAMP BOLT & NUT ASSY	4
8	S4956-1	FLEXIBLE COUPLING COMPLETE 180mm	Inc 1 - 7

ADVISE GEARBOX TYPE WHEN ORDERING PARTS (Check Dia.of Couplings)



PTX 240, 300, 360 PASTURE TOPPER TRAIL DRAWBAR

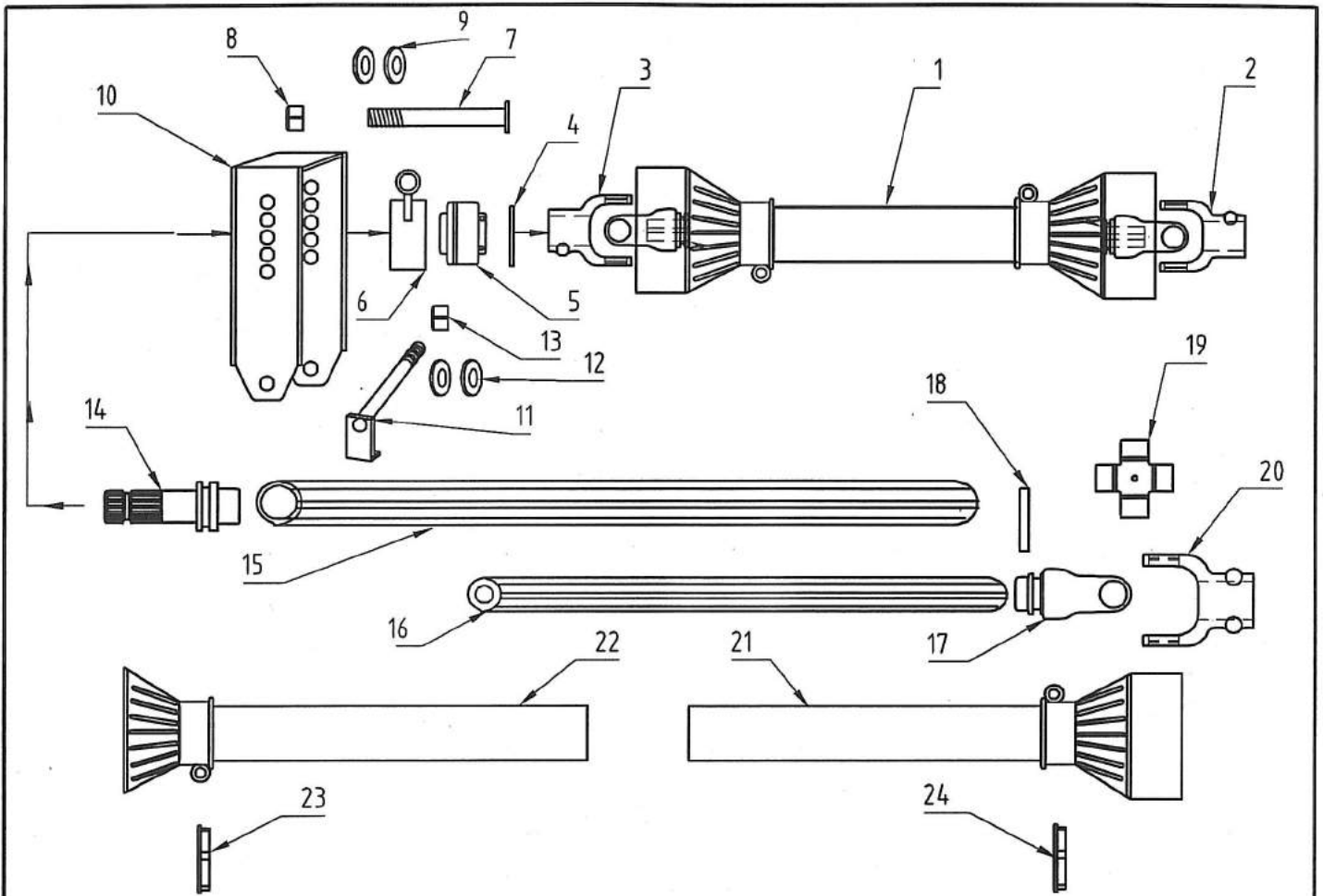
ITEM	PART No.	DESCRIPTION	No.OFF
1	S2261	DRAWBAR HITCH	1
2	S3579	DRAWBAR HITCH BOLTS	2
3	S2263	BRAWBAR HITCH BOLT NUTS.	4
4	S2260	HOSE CARRIER W/- NUT & SWASHER	1
5	S1796	DRAWBAR JACK & HANDLE ASSEMBLY	1



PASTURE TOPPER DRIVESHAFTS (Linkage Models)

7 SERIES

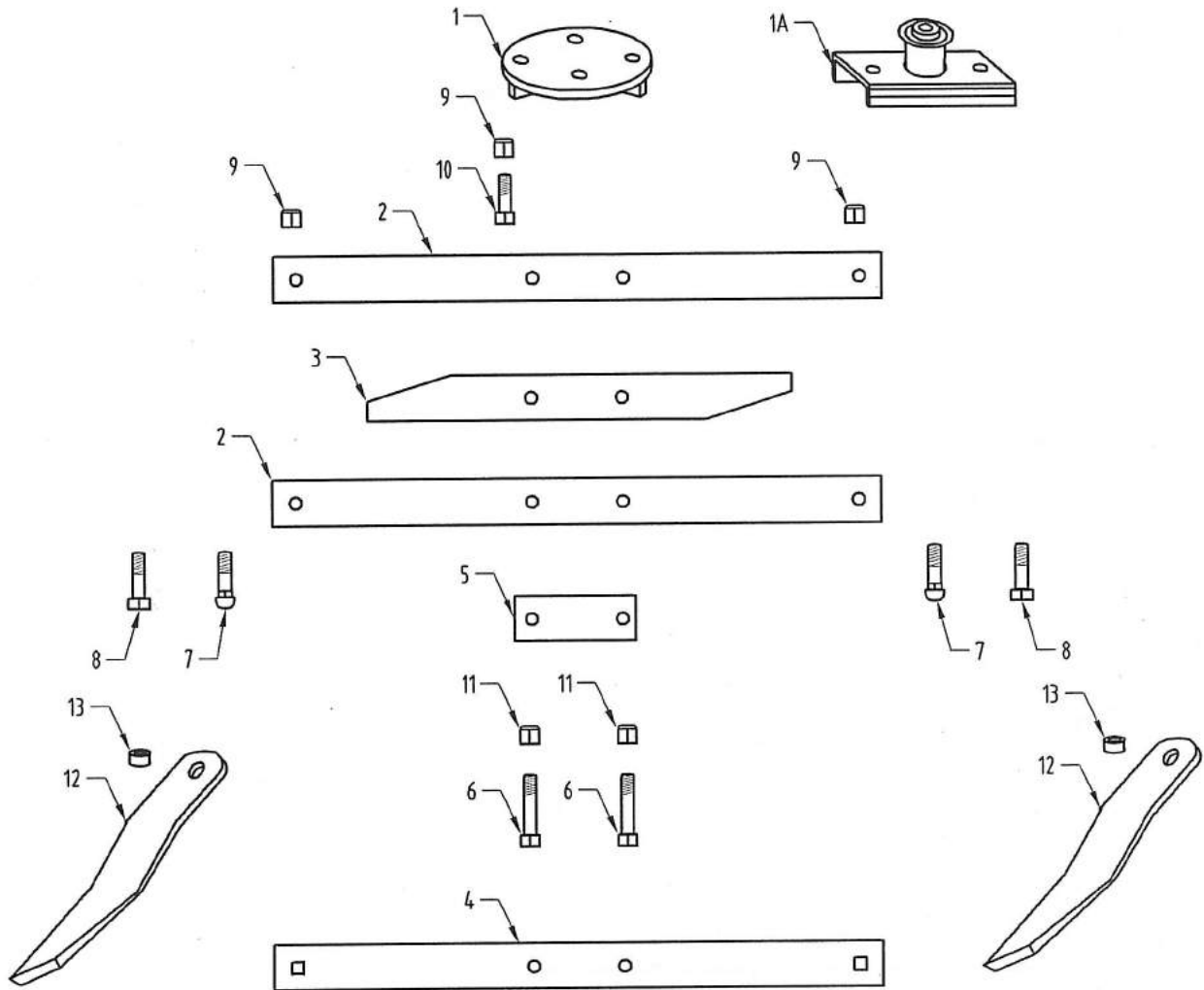
ITEM No.	PART No. 240, 30, 360	DESCRIPTION	QTY. OFF.
1	S7070	DRIVESHAFT OUTER TUBE	1
2	S7069	DRIVESHAFT INNER TUBE	1
3	S7079	DRIVESHAFT TUBE YOKE (INNER)	1
4	S7073	DRIVESHAFT ROLL PIN	1
5	S7081	DRIVESHAFT UNIVERSAL	2
6	S7068	DRIVESHAFT QR YOKE (1 3/8 X 6)	1
7	S7080	DRIVESHAFT TUBE YOKE (OUTER)	1
8	S7074	DRIVESHAFT ROLL PIN	1
9	S7067	DRIVESHAFT QR YOKE (1 3/4 X 20)	1
10	S7077	DRIVESHAFT MALE COVER ASSY.	1
11	S7078	DRIVESHAFT FEMALE COVER ASSY.	1
12	S7066	DRIVESHAFT COMPLETE (1 3/8.....1 3/4)	(1-11)



PASTURE TOPPER MAIN DRIVESHAFT & JACKSHAFT

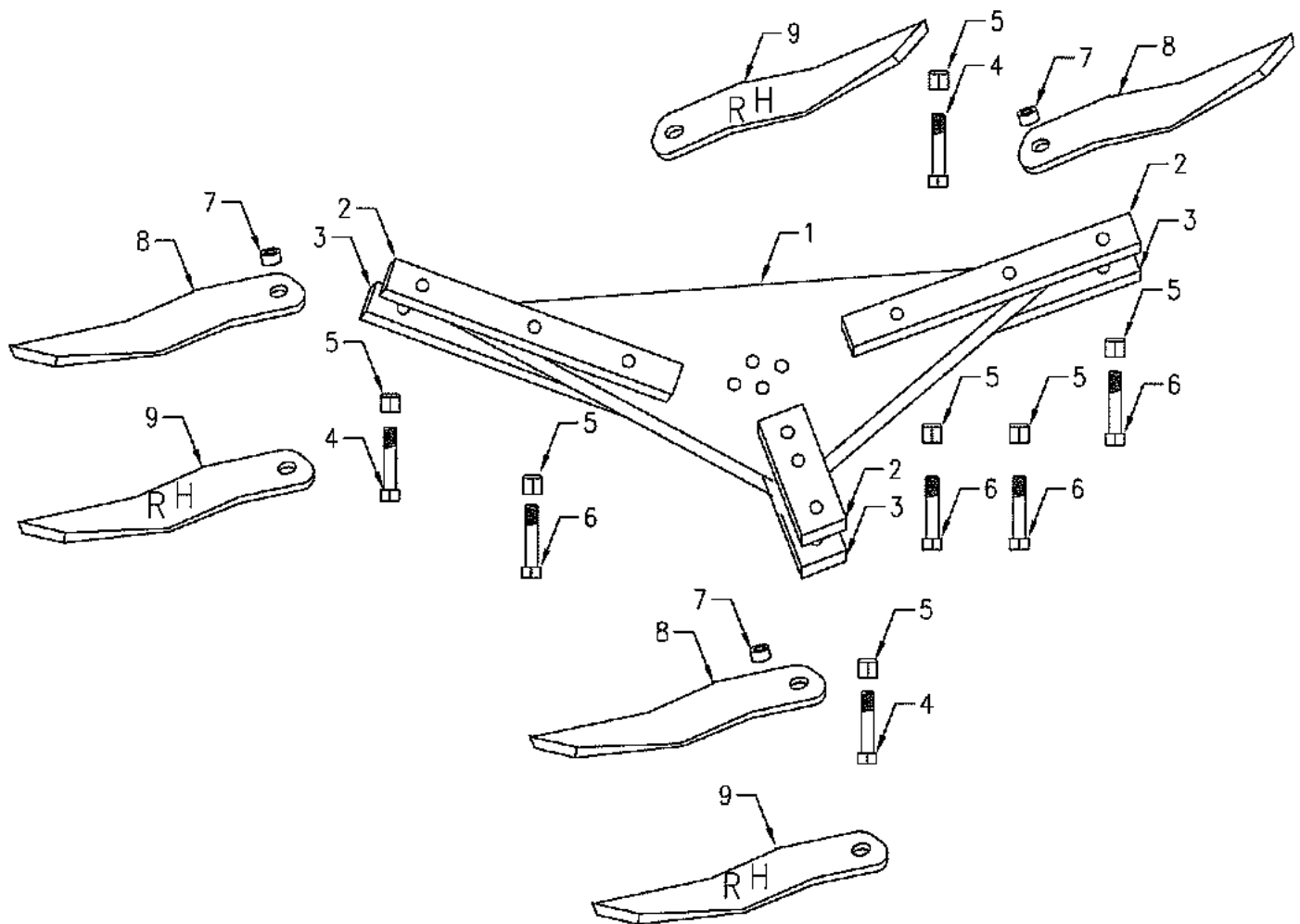
WALTERSCHIED 2500 SERIES

ITEM No.	PART No.	DESCRIPTION	QTY. OFF.
1	S1717	DRIVESHAFT FIXED (ADVISE O/A LENGTH)	1
2	S1722	DRIVESHAFT YOKE (1 3/8 X 6 SPLINE Q.R.)	1
3	S1753	DRIVESHAFT YOKE (1 3/4 X 20 SPLINE P.B.)	1
4	S2292	BEARING CIRCLIP	1
5	S2293	BEARING 1 3/4" I.D.	1
6	S2365	BEARING HOUSING 1" PIN NEW TYPE	1
7	S2368	BEARING HOUSUNG PIVOT PIN 1" DIA NEW TYPE	1
8	S5067	NYLOC NUT	1
9	S4083	WASHER	2
10	S2366	BEARING CARRIER NEW TYPE 3/4" PIN & 1" BRG PIN	1
11	S2367	BEARING CARRIER HINGE PIN 3/4" DIA NEW TYPE	1
12	S4083	WASHER	2
13	S5067	NYLOC NUT	1
14	S1757	WELD IN SPIGOT 1 3/4 X 20 SPLINE	1
15	S1761	W/SCHIED OUTER TUBE STAR PATTERN	1
16	S1759	W/SCHIED INNER TUBE STAR PATTERN	1
17	S1762	YOKE SUITS INNER TUBE STAR PATTERN	1
18	S1758	ROLL PIN	1
19	S1754	UNIVERSAL JOINT	1
20	S1753	DRIVESHAFT YOKE (1 3/4 X 20 SPLINE P.B.)	1
21	S1745	JACKSHAFT INNER COVER	1
22	S1743	JACKSHAFT OUTER COVER	1



CUTTING HEAD ASSEMBLY (2 blade per Head)

ITEM No	PART No.	PART No.	PART No.	DESCRIPTION	QTY. OFF.
1	240 N/A	300 S5060	360 S5060	CUTTING HEAD BOX	1
1A	S4051	N/A	N/A	CUTTING HEAD BOX (Suit B/co 100 hp g/box)	
2	S2835	S4058	S6058	HEADFLAT Top Rnd. Hole	1
3	S2837	S4059		SPACER 5/16"	2
3			S6081	SPCER 5/8"	1
4	S2836	S2112	S2113	HEADFLAT Bottom Sq. Hole	1
5	S4060	S4060	S4060	RETAINING PLATE	1
6	S5066	S5066	S5066	BOLTS Cutting Head Retaining	2
7	S2115	S2115	S2115	BOLTS Dome Head	2
8	S5068	S5068	S5068	BOLTS Hex. Head Optional	2
9	S5067	S5067	S5067	NYLOC NUT 3/4 Unc	4
10	S4055	S4055	S4055	BOLT Headbox Retaining 3/4 Unc x 2 1/4"	2
11	S4067	S4067	S4067	NYLOC NUT 3/4 Unf	2
12	S4090			BLADE 300 x 16 S/L SS LH	2
12	S4091			BLADE 300 x 16 S/L SS RH	2
12		S5061	S5061	BLADE 457 x 16 S/L SS LH	2
12		S5065	S5065	BLADE 457 x 16 S/L SS RH	2
13	S5069	S5069	S5069	BUSH suit 16mm Blade	2



PASTURE TOPPER - TRIANGULAR CUTTING HEAD ASSEMBLY

(3 Blades Per Head)

ITEM No.	PART No PLX/ PTX300	PART No PLX/ PTX360	DESCRIPTION	QTY. OFF.
1	S02813	S02775	TRIANGLE PLATE Suit Headflats	1
2	S02468	S02468	HEADFLAT Rnd Hole	3
3	S02469	S02469	HEADFLAT Square Hole	3
4	S02115	S02115	BOLT Dome Head	3
5	S05067	S05067	NYLOC NUT 3/4 Unc	13
6	S05068	S05068	BOLT Hex Head	10
7	S05069	S05069	BLADE BUSH 16mm	3
8	S05061	S05061	BLADE S/L SS LH (Anti - Clock)	3
9	S05065	S05065	BLADE S/L SS RH (Clockwise)	3