
OPERATOR & PARTS MANUAL



SUPERIOR EQUIPMENT

Phone: (07) 4691 1500

Email: sales@alamoag.com.au

Website: www.superiorequipment.com.au



LXSP5 SERIES

Model	Width	Weight	HP (Min)
LXSP 5	1.5m / 5'	700 kg	50

Specifications

- **EHD Gearbox**
- **Two Depth Control Wheels to Front with hydraulic body tilt**
- **One 500x10 Wheel to Rear**
- **Galvanised Body**
- **Hydraulic control side chute**
- **Tilt Adjusting Tower**

TABLE OF CONTENTS

CORPORATE PHILOSOPHY.....	3
INSTRUCTION MANUAL & SPARE PARTS LIST	4
WARRANTY CONDITIONS.....	6
LIABILITY & LEGAL ISSUES	7
DEALER PRE-DELIVERY AND INSTALLATION	
CHECKLIST.....	8
OPERATIONAL SAFETY INSTRUCTIONS.....	9
OPERATING INSTRUCTIONS.....	12
INITIAL START UP	12
<i>Attaching Tractor</i>	<i>12</i>
<i>Setting Up Your Soil Profiler.....</i>	<i>13</i>
<i>Setting Up Your Blades</i>	<i>14</i>
OPERATION	14
<i>Clutch Settings</i>	<i>14</i>
<i>Clutch Adjustment</i>	<i>15</i>
GENERAL MAINTENANCE	15
LXSP 5 SERIES ASSEMBLY	16
PROFILING HEAD ASSEMBLY	19
GEARBOX ASSEMBLY	20
CLUTCH ASSEMBLY	22
FRONT WHEEL ASSEMBLY.....	23
CASTOR WHEEL ASSEMBLY	24

OPERATING INSTRUCTIONS

Getting the best from your Superior Slasher

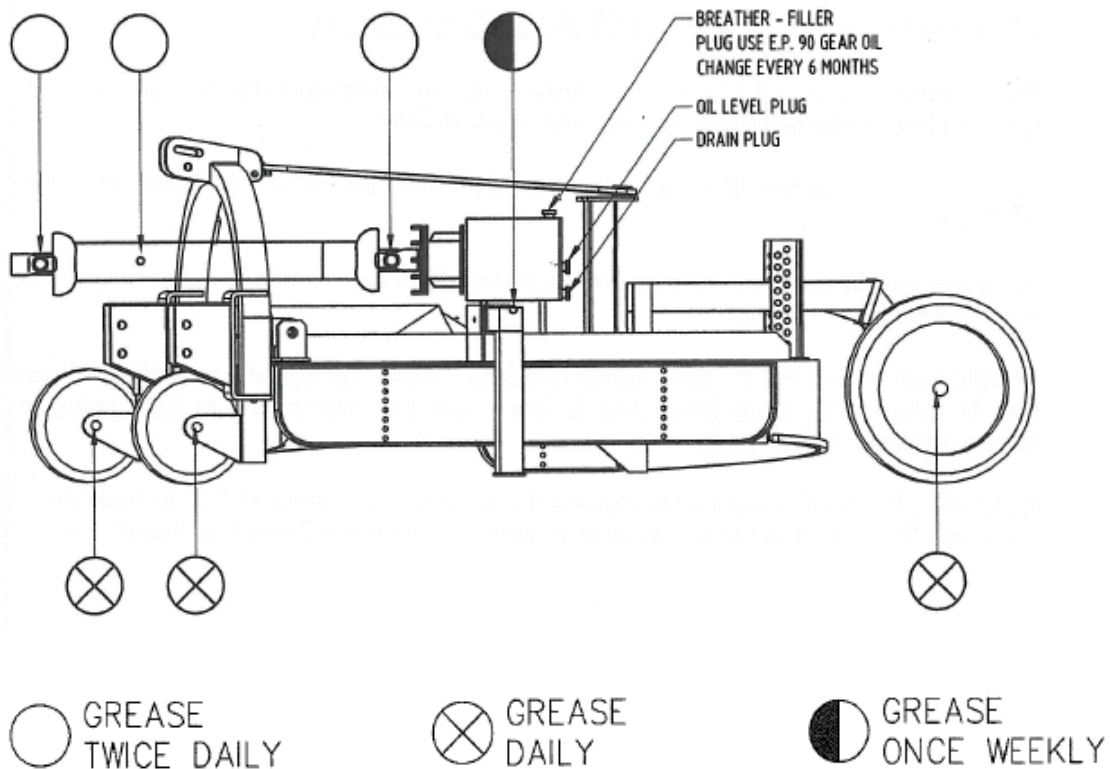
INITIAL START UP

Check Gearboxes for oil daily: Recommended OIL: 85w -- 140 EP GEAR OIL.

Gearbox level plug is located at side of gearbox, correct oil level is at the top of the hole where the oil plug screws in.

Prompt attention to oil leaks is essential.

Grease all grease points: Recommended Grease: All Purpose Grease EPL 2



Attaching Tractor

Connect tractor to TPL lower link pins. The Profiler is fitted with a stepped pin which will fit either cat 1, 22 mm (7/8") or cat 2, 30 mm (1 1/8").

Make sure tractor is fitted to correct size and place lynch pin in hole end of pin.

Tighten anti-sway bars / chains (must be firm, not rigid)

Connect top link to tower.

Connect driveshaft to P.T.O. on tractor and clutch / gearbox on profiler, make sure clamp bolts and or Q.R. pins are located in respective grooves. (Failure to do this will result in driveshaft damage).

Tractor lift arms can vary in length. CHECK OPERATIONAL LENGTH OF DRIVESHAFT BEFORE OPERATING PROFILER.

Check length of driveshaft at the highest and lowest positions of tractor lift arms.

The driveshaft requires sliding movement of approx. 100 mm (4") to avoid bottoming or pulling apart at maximum operational lengths.

Caution entering & exiting steep gullies or steep ridges may result in drive shaft bottoming out or coming apart. Check drive shaft length before using Profiler in extreme conditions.

Setting Up Your Soil Profiler

Soil profiler should be set up to the correct profiling height by adjusting front steel wheels, side skids, hydraulic adjusted tower, and hydraulic adjusted chute.

The rear of the machine is adjusted by the rear wheel by placing the bolt in the higher or lower position.

Profiler should be set at a level stance when viewed from the side. PTO speed is critical, it is best to keep engine revs up.

To achieve optimum results, give PTO max torque (Optimum Blade Tip Speed), ground speed can then be adjusted by using lower gear in heavy going and higher gear in light going.

Setting Up Your Blades

Check that profiling blades are fitted tightly and correctly to the profiler spindle.

Check that profiler blades are tight, inspection should be carried out daily. If holes are elongated, it is recommended that replacement blades, bolts & nuts be fitted immediately.

OPERATION

CUTTING DEPTH –

For best mowing results maintain correct PTO speeds

In heavy going or awkward areas change back a gear or reduce forward speeds rather than reduce PTO speed by throttling back

CAUTION: Entering & exiting steep gully's or steep ridges may result in drive shaft bottoming out or coming apart, check drive shaft length before using Profiler in extreme conditions.

Clutch Settings

Clutch settings are best set up in conditions that the Profiler is operating in.

- € Operate the Profiler in reasonably heavy conditions for approx. 20 to 30 minutes.
- € Switch engine off, remove key from ignition
- € Disengage PTO
- € Check temperature of clutch with **EXTREME CAUTION** by placing hand near clutch, if clutch is warm to the touch it is about right, if it is too hot to touch or hot to the touch the clutch has been slipping excessively and adjustment is necessary.

Clutch Adjustment

- € Undo lock nuts
- € Tighten (increase spring tension) or loosen (decrease spring tension) adjusting nut by $\frac{3}{4}$ of a turn
- € Make sure each of the nuts is adjusted in turn.
- € Do up lock nuts
- € Refer back to Clutch Settings

CAUTION: If clutch is too tight (cold) and there is no opportunity for clutch slip, costly damage to components may result.

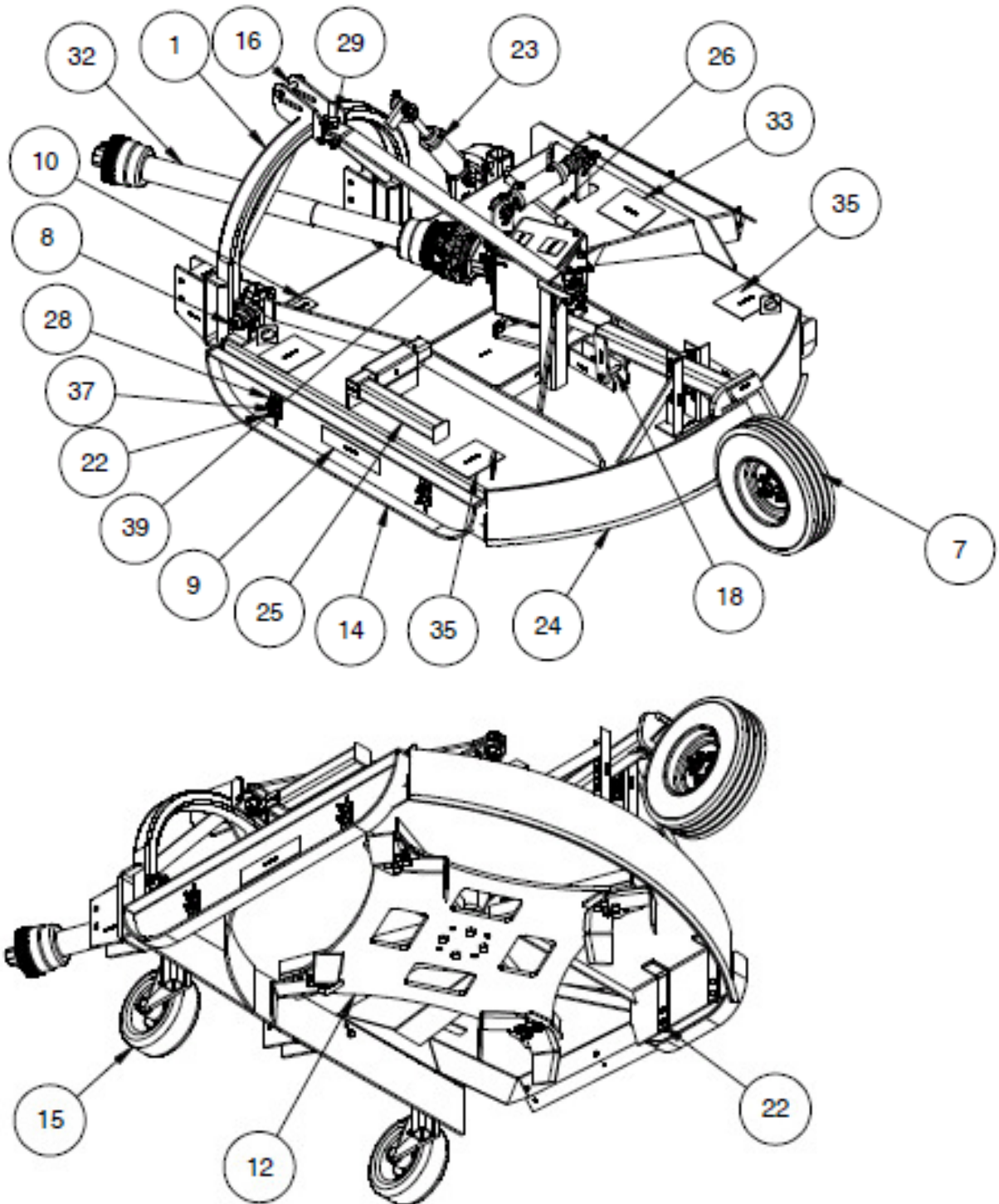
GENERAL MAINTENANCE

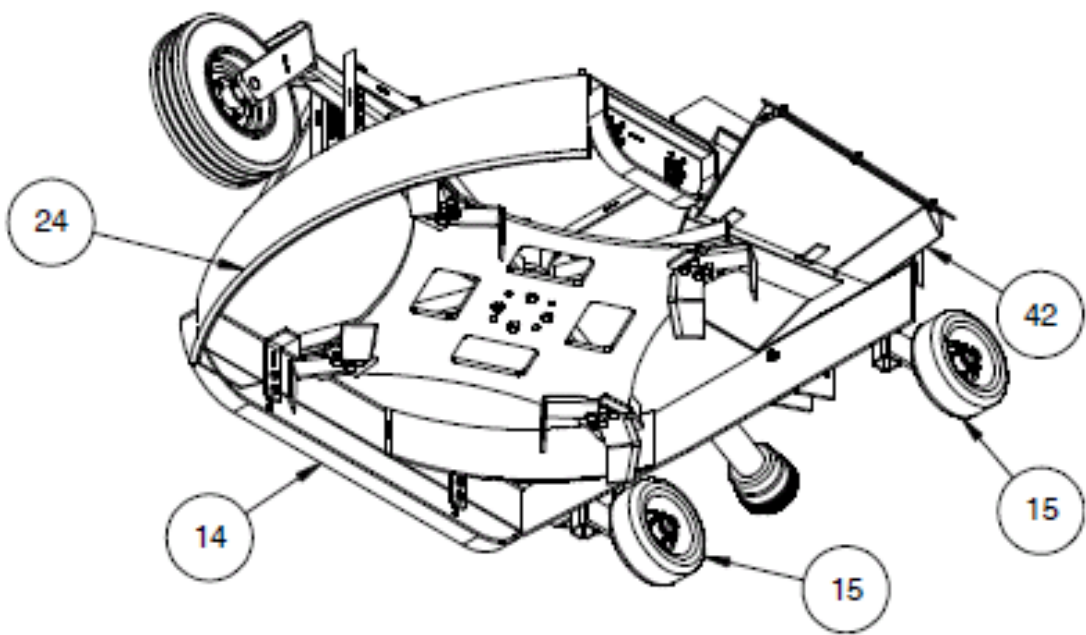
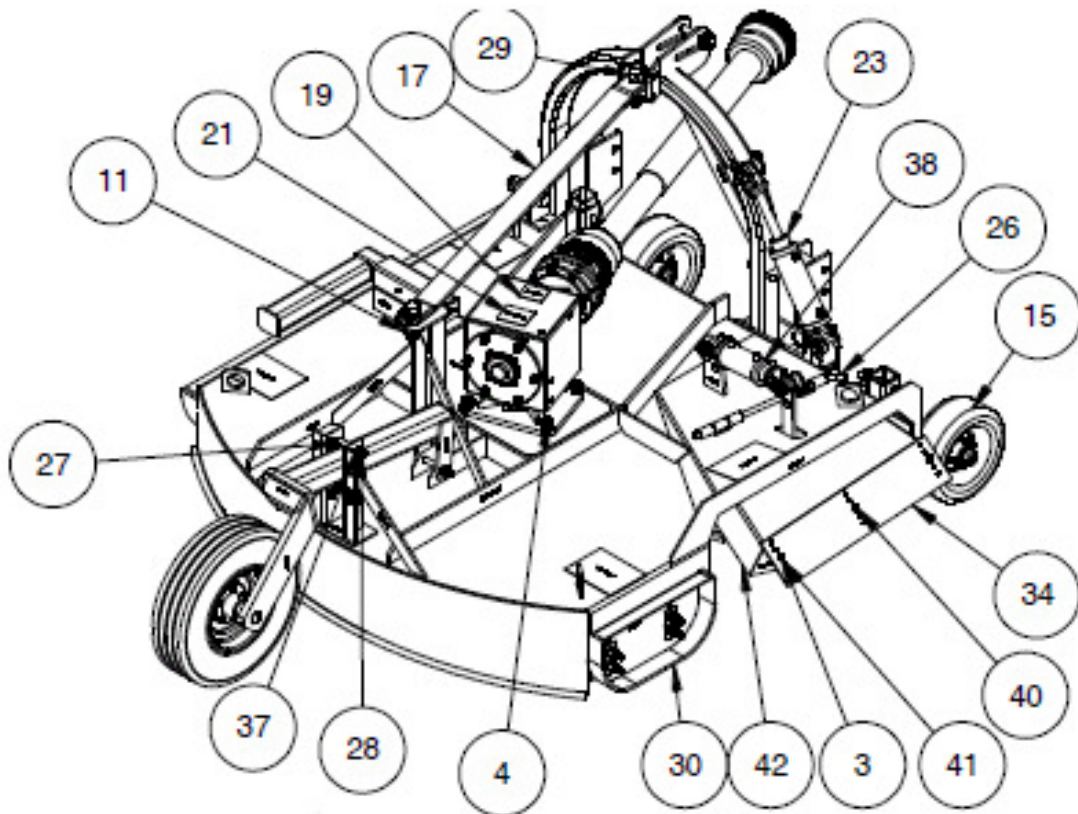
It is important that after approx. 30 to 60 minutes operation you should stop the soil profiler and check all bolts and nuts for tightness. While all bolts are tightened on assembly, impact and working loads cause bedding in of components and early attention to all bolt and nuts will ensure trouble free operation of your Profiler.

Particular attention should be paid to clamp bolt, clutch bolts, cutting head bolts, blade bolts and nuts, as well as wheel nuts, bearings and castor assembly components.

Early inspection of components after initial start up, and adherence to the lubrication recommendations, will greatly assist in maintaining the durability of your investment.

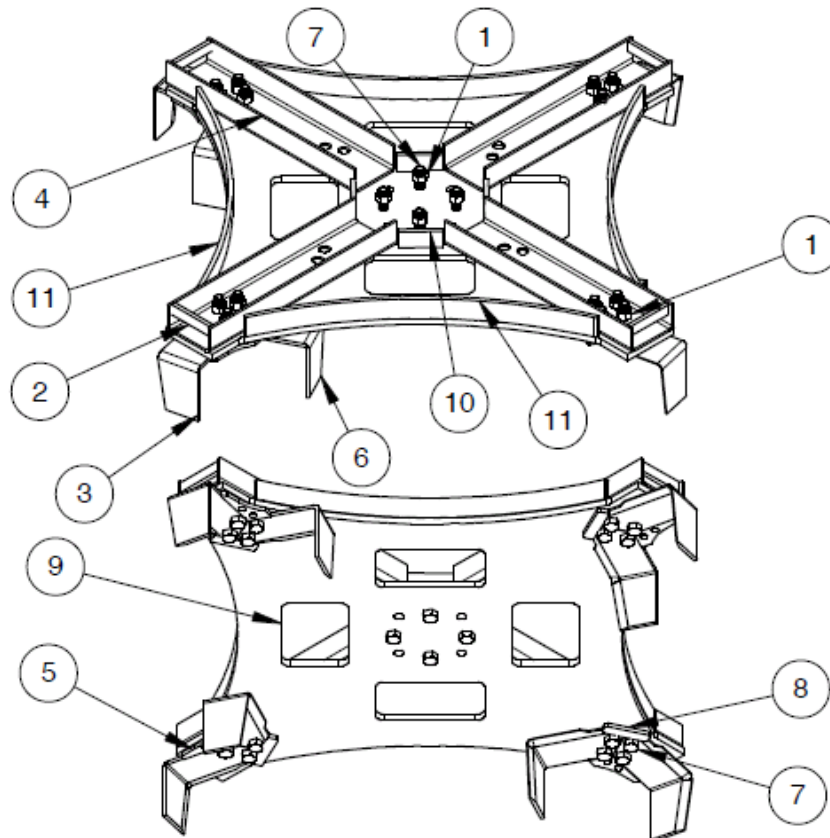
LXSP 5 SERIES ASSEMBLY





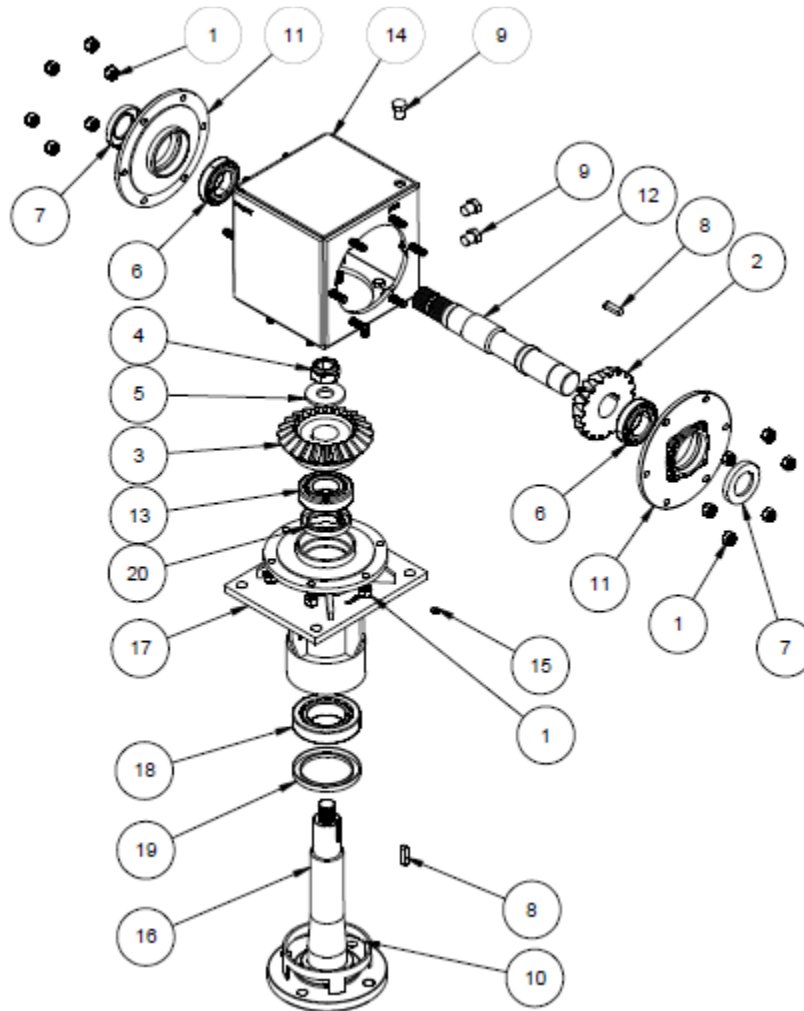
S08400		LXSP 5 SOIL PROFILER BODY COMPLETE	
		REVISION A FROM 012/2014	
REF NO	PART NO	QTY	DESCRIPTION
1	S08428-1	1	TOWER ASSEMBLY
2	S03546	1	HEX BOLT 5/8 UNC X 5 1/2" LONG
3	S01025	3	HEX NUT 3/8 UNC
4	S03389	4	HEX BOLT 3/4 UNF X 2 1/4" LONG
5	S04245	4	SPRING WASHER 3/4"
6	S05629	8	SKID TAB
7	S08432	1	CASTOR BEAM AND WHEEL ASSEMBLY
8	S03581	1	HEX BOLT 1" UNC X 5" LONG
9	MI00034-1	1	DECAL "SUPERIOR" (BIG)
10	ST07282	1	SERIAL NUMBER PLATE
11	S01039	3	NYLOC NUT 1 UNC
12	S08436	1	PROFILING HEAD ASSEMBLY
13	S08471	1	GEARBOX ASSEMBLY
14	S04370	1	ADJUSTABLE SKID WITH 30" HOLE CENTRE
15	S08431	2	FRONT WHEEL ASSEMBLY COMPLETE
16	S04133	3	CAT 1 TOP LINK PIN 3/4 DIA
17	S08429	1	STAY BAR ASSEMBLY
18	S03545	1	HEX BOLT 5/8 UNC X 5" LONG
19	MI00034-6	1	DECAL "ROTATING DRIVELINE"
20	S01804	3	HEAVY FLAT WASHER 1"
21	MI00034-2	1	DECAL "CHECK OIL LEVEL"
22	S03539	8	HEX BOLT 5/8 UNC X 2 1/2" LONG
23	S08406	1	HYD CYLINDER 6" STROKE 1 1/2" BORE
24	S08420	1	SOIL PROFILER BODY FABRICATION
25	S08426	1	SAFETY LEG ASSEMBLY
26	S08422	1	CONTROL FLAP PIN
27	S03544	1	BOLT UNC 5/8 UNC X 4 1/2" LONG
28	S01033	11	NYLOC NUT 5/8 UNC
29	S02262	2	HEX HD BOLT 1" UNC X 4" LONG
30	S08425	1	ADJUSTABLE SKID SHORT
31	S04011	3	LYNCH PIN
33	S07222	1	DRIVESHAFT COMPLETE 8 SERIES
34	MI00034-3	1	DECAL "KEEP CLEAR OPEN DISCHARGE"
35	S08423	1	CONTROL FLAP EXTENSION
36	MI00034-13	3	DECAL "MANUFACTURED BY"
37	S04225	4	WASHER 5/8"
38	S08405	10	HYDRAULIC CYLINDER 4" STROKE
39	S09087	1	CLUTCH ASSEMBLY
40	S03478	3	HEX BOLT 3/8 UNC X 1" LONG
41	S04242	3	SPRING WASHER 3/8"
42	S08416	1	CHUTE FLAT WELDMENT
43	ST02220	2	SHORT SKID LEG
	S07497	1	CAT II TOWER TOP LINK CHAIN

PROFILING HEAD ASSEMBLY



S08436			
PROFILING HEAD ASSEMBLY COMPLETE			
REVISION B FROM 08/2012			
REF NO	PART NO	QTY	DESCRIPTION
1	S05067	20	NYLOC NUT 3/4" UNC
2	ST02471	4	CHANNEL STIFFENER
3	S08412	4	CUTTING BLADE
4	S08410	4	U- CHANNEL 125 X 65 PFC
5	S08414	4	PROFILED GUSSET
6	S08413	4	SWEEPING BLADE
7	S04055	20	HEX BOLT 3/4 UNC X 2 1/2" LONG
8	S08415	4	PLAIN GUSSET
9	S08403-4	1	PROFILING HEAD PLATE
10	ST02473	4	CHANNEL STIFFENER
11	ST02472	4	STIFFENER

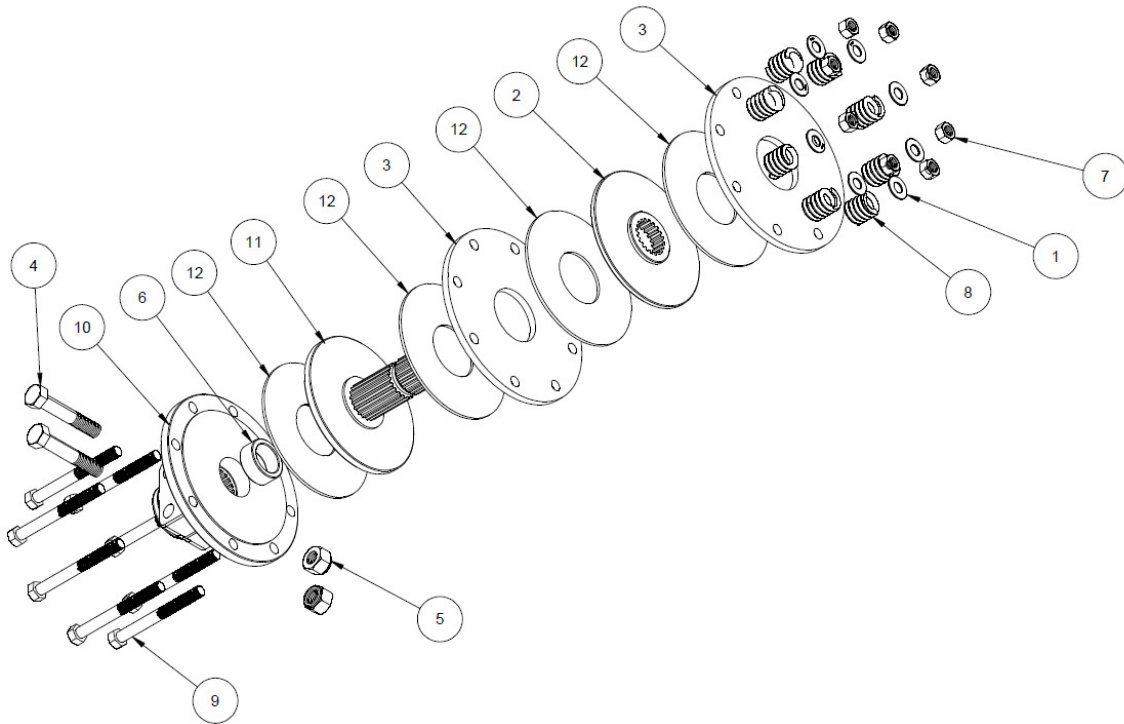
GEARBOX ASSEMBLY



S08471			
S300 GEARBOX ASSEMBLY COMPLETE			
REVISION D FROM 04/2015			
REF NO	PART NO	QTY	DESCRIPTION
1	S01003	18	NYLOC NUT 1/2" UNF
2	S01005-1	1	PINION 1:35 17 TEETH
3	S01005-2	1	GEAR 1:35 23 TEETH
4	S01007	1	1 1/4" UNF THIN NYLOC NUT
5	S01008	1	WASHER 1 1/4" X T6
6	S01010	2	SINGLE ROW TPR BEARING
7	S01015	2	SEAL INNER
8	S01016	2	SHAFT KEY
9	S01018	1	BREATHER/FILLER PLUG

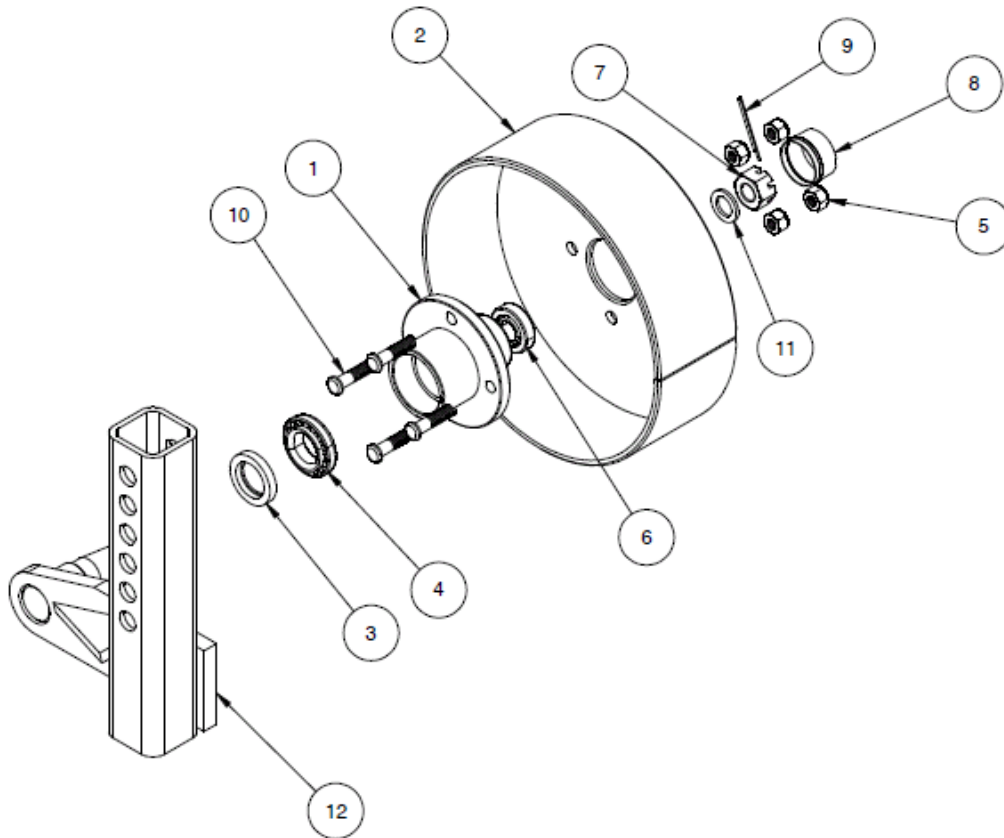
10	S01019	1	GRASS RING
11	S02003	2	END CAP
12	S02008-A	1	CROSS SHAFT 1 3/4" X 20 X 16" REV
13	S02657	1	INNER BEARING
14	S03002	1	GEARBOX HOUSING
15	S04085	1	GREASE NIPPLE
16	S08462	1	OUTPUT SHAFT EXTRA HEAVY DUTY
17	S08467	1	HEAVY DUTY OUTPUT CARTRIDGE
18	S08469	1	SINGLE ROW BEARING
19	S08470	1	OUTER SEAL
20	S09666	1	INNER SEAL

CLUTCH ASSEMBLY



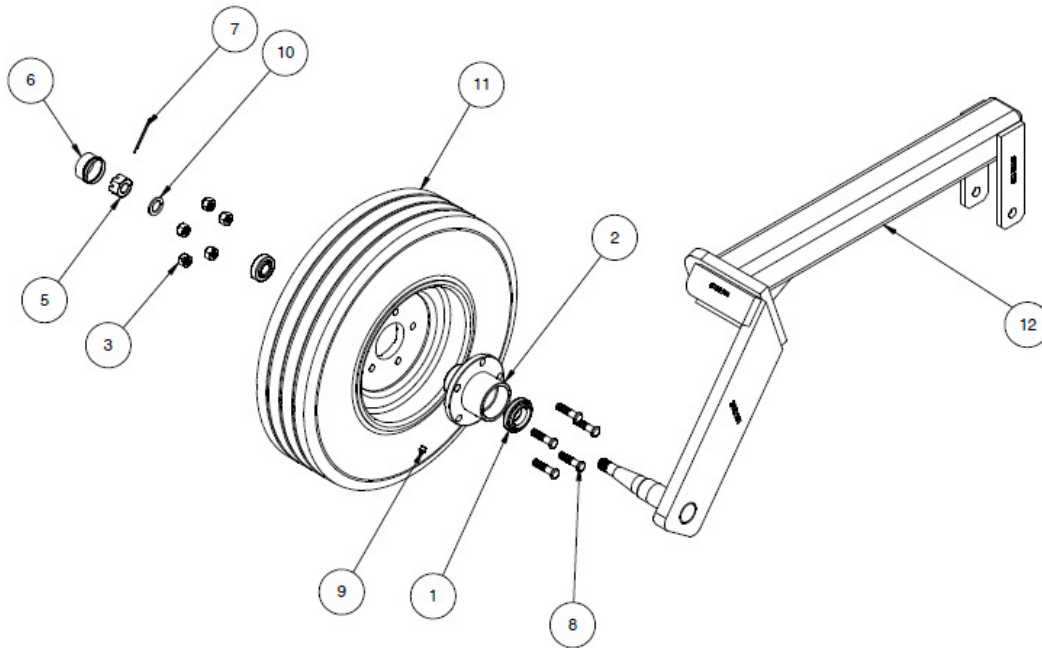
S09087 CLUTCH ASSEMBLY COMPLETE			
REVISION B FROM 02/2015			
REF NO	PART NO	QTY	DESCRIPTION
1	S04224	8	WASHER 1/2" X 1.5
2	S06401	1	SLIDING SPACER 1 3/4 X 20
3	S04026-1	2	FRONT PLATE
4	S03230	2	HEX BOLT 5/8" X 3 1/2" UNC
5	S01033	2	NYLOC NUT 5/8"
6	S04103	1	BUSH
7	S02334	8	WHIT NUT 1/2"
8	S04100	8	CLUTCH SPRING
9	S02334	8	WHIT BOLT 1/2" X 5
10	S02317	1	BACK PLATE 1 3/4 X 20
11	S06400	1	DRIVE PLATE 1 3/4 X 20
12	S04027	4	FRICITION LININGS

FRONT WHEEL ASSEMBLY



S08431		FRONT WHEEL ASSEMBLY COMPLETE	
		REVISION A FROM 08/2015	
REF NO	PART NO	QTY	DESCRIPTION
1	S02150	1	HUB 4 STUD
2	S02215	1	12" STEEL WHEEL ASSEMBLY
3	S02223	1	TAPERED BEARING & SEAL
4			
5	S02225	4	HEX NUT 7/16 UNF
6	S02229	1	BEARING TAPERED LM11949-10
7	S02231	1	HEX SLOTTED NUT 3/4UNF
8	S02232	1	DUST CAP
9	S02233	1	SPLIT PIN
10	S02237	4	WHEEL HUB STUD 7/16 UNF
11	S04226	1	WASHER FLAT BRIGHT 3/4 X 3MM
12	S08434	1	STUB AXLE ADJ BRACKET ASSEMBLY

CASTOR WHEEL ASSEMBLY



S08432		CASTOR WHEEL ASSEMBLY COMPLETE	
		REVISION A FROM 09/2015	
REF NO	PART NO	QTY	DESCRIPTION
1	S02223	1	TAPERED BEARING & SEAL
2	S02224	1	HUB 5 STUD
3	S02225	5	HEX NUT 7/16 UNF
4	S02229	1	BEARING TAPERED LM11949-10
5	S02231	1	HEX SLOTTED NUT 3/4/16 UNF
6	S02232	1	DUST CAP
7	S02233	1	SPLIT PIN
8	S02237	5	WHEEL HUB STUD 7/16 UNF
9	S04085	1	GREASE NIPPLE
10	S04226	1	WASHER FLAT BRIGHT 3/4" X 3MM
11	S04269-1	1	MONOFIL CASTOR WHEEL 520X10
12	S08435	1	CASTOR BEAM ASSEMBLY



WARRANTY

31 ANTIMONY STREET

CAROLE PARK QLD 4076

Ph: 07 3271 3177 Fax: 07 3271 3285

Manufactures:- front mount mowers, finishing mowers, roller mowers, slashers, orchard slashers, vineyard mowers, vee type slashers, wide slashers 10 meter, belt drive & gear drive pasture toppers, post hole diggers, grader blades, turf aerators, lifting jibs.

INSTALLATION

DEALER / DEALER REPRESENTATIVE TO (tick) EACH ITEM

- () Visual check of machine
- () All fluid levels & Grease points
- () Operating functions

SAFE OPERATING INSTRUCTIONS

- () Function of controls
- () starting & stopping procedures
- () Proper use & operation of equipment
- () Instruction on safe operation
- () Follow all "Safe Operation" guidelines set out in operators manual and equipment decals.
- () Read operators manual before operating
- () Check that all safety covers & shields are in place
- () It is the owners' responsibility to provide operator's manuals & to ensure that all operators read these manuals prior to operation.

PROPER MAINTENANCE OPERATION

- () Periodical maintenance & inspection
- () Preventive maintenance
- () Use of proper lubricants
- () Lubrication using lubrication chart where provided
- () Precautions for proper adjustments

AFTER SALES SERVICE INSTRUCTION

- () Warranty & service policy
- () Periodic service schedule
- () Spare parts ordering procedure

EQUIPMENT MODEL: _____ SERIAL No _____

OPTIONAL EQUIPMENT _____

WHERE FITTED _____

() Equipment has been installed to manufacturers' specifications, operator manual and technical bulletins.

INSTALLED BY: (print) _____

PURCHASER _____

Superior guarantees all new equipment (manufactured by Superior) against faulty parts and or workmanship for a period of Six (6) months or 180 days from date of purchase. Any variation to this figure will be provided in writing. The use of non-original or non-Superior approved parts during the warranty period may invalidate this warranty. During this warranty period Superior agrees to replace pro-rata, the parts proved faulty by our evaluation team.

Please note: PTO Shafts, Bearings, and Vee Belts, hydraulic pumps, motors and fittings are excluded and are to be covered by the original equipment manufacturers guarantee.

Any part used for cutting or digging (blades, blade carriers, auger teeth or pilots) will be subject to testing and evaluation to determine any claim justifications. Superior has their own Warranty Claim Form that is to be completed in full before any action is taken.

Any equipment or part thereof which is subject to a warranty claim must be shipped by prepaid freight or delivered to Superior Equipment in Brisbane for evaluation. Alternatively, the item/s may be delivered by prepaid freight to an Approved Superior Service Centre to evaluation. Superior will not pay for any service or repair work carried out without prior, written approval. Note – Superior's Labour Rate for External Repairs will apply to all work authorised under this Warranty.

PLEASE SIGN & RETURN FOR REGISTRATION WITHIN 14 DAYS OF PURCHASE TO VALIDATE THE WARRANTY

MACHINE MODEL NO: _____

SERIAL NO: _____

DATE PURCHASED (END USER) _____

ADDRESS _____

SIGNATURE _____ PHONE _____

AGENT OR DEALER STAMP

WARRANTY IS QUOTED AT 180 DAYS AGAINST FAULTY PARTS & WORKMANSHIP FROM DATE OF SALE TO END USER.

PLEASE NOTE: UNDER DUTY OF CARE STIPULATIONS, IT IS A REQUIREMENT THAT THE PURCHASER IS FULLY INSTRUCTED IN THE USE OF THESE GOODS. THIS WARRANTY FORM CANNOT BE ACCEPTED UNLESS IT IS SIGNED & FULLY COMPLETED ON BOTH SIDES.
