

---

## **OPERATOR & PARTS MANUAL**



---

### **SUPERIOR EQUIPMENT**

Phone: (07) 4691 1500

Email: [sales@alamoag.com.au](mailto:sales@alamoag.com.au)

Website: [www.superiorequipment.com.au](http://www.superiorequipment.com.au)



## LNT SERIES TWIN ROTOR MEDIUM HEAVY DUTY

Model	Width	Weight	HP (Min)
LNT 10	3.0m / 10'	1,050 kg	75
LNT12	3.6m / 12'	1,250 kg	85

### Specifications

- TPL with Cat 1 & 2
- Flex Tower
- Front & Rear Safety Chains
- Twin Rotor with Overlapping blades with *No Timing*
- 4 Plate Clutch between all Gearboxes
- 150hp Gearbox to Centre
- 2 x 120hp Side Gearboxes
- All 1 3/4" 20 Spline Drives
- A8 Driveshaft
- Adjustable Skids
- Twin 500 x 10 Monofil Castor Wheels
- Optional Galvanising

# TABLE OF CONTENTS

<b>CORPORATE PHILOSOPHY.....</b>	<b>3</b>
<b>INSTRUCTION MANUAL &amp; SPARE PARTS LIST.....</b>	<b>4</b>
<b>WARRANTY CONDITIONS.....</b>	<b>6</b>
<b>LIABILITY &amp; LEGAL ISSUES.....</b>	<b>7</b>
<b>DEALER PRE-DELIVERY AND INSTALLATION</b>	
<b>CHECKLIST.....</b>	<b>8</b>
<b>OPERATIONAL SAFETY INSTRUCTIONS.....</b>	<b>9</b>
<b>OPERATING INSTRUCTIONS.....</b>	<b>12</b>
<b>INITIAL START UP .....</b>	<b>12</b>
<i>Attaching Tractor .....</i>	<i>12</i>
<i>Setting Up Your Slasher .....</i>	<i>13</i>
<i>Setting Up Your Rear Castor Wheels .....</i>	<i>13</i>
<b>OPERATION .....</b>	<b>14</b>
<i>Clutch Settings .....</i>	<i>14</i>
<i>Clutch Adjustment .....</i>	<i>14</i>
<b>GENERAL MAINTENANCE .....</b>	<b>15</b>
<b>LNT 10 SERIES ASSEMBLY .....</b>	<b>16</b>
<b>LNT 12 SERIES ASSEMBLY .....</b>	<b>21</b>
<b>LNT 10 CUTTING HEAD ASSEMBLY .....</b>	<b>24</b>
<b>LNT 12 CUTTING HEAD ASSEMBLY .....</b>	<b>28</b>
<b>LNT 10 &amp; 12 CASTOR ASSEMBLY .....</b>	<b>33</b>

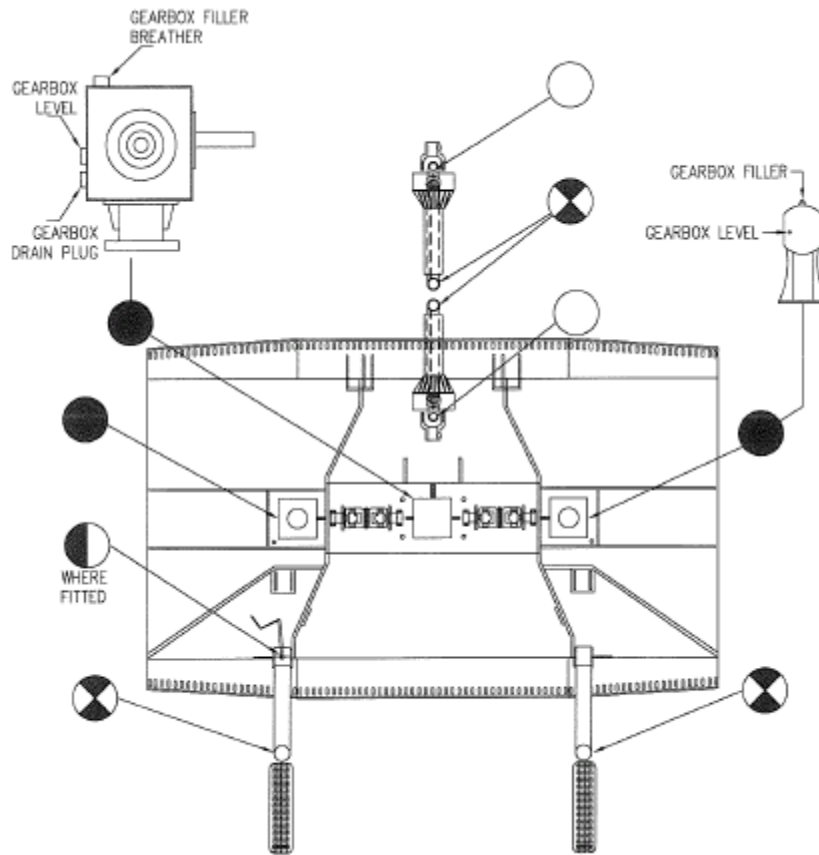
# OPERATING INSTRUCTIONS

*Getting the best from your Superior Slasher*

## INITIAL START UP

Check Gearboxes for oil: Recommended OIL: 85w - 140 EP GEAR OIL

Grease all grease points: Recommended Grease: All Purpose Grease EPL 2



- |                         |                   |                         |   |
|-------------------------|-------------------|-------------------------|---|
| ○ GREASE<br>TWICE DAILY | ⊗ GREASE<br>DAILY | ◐ GREASE<br>ONCE WEEKLY | ● CHECK OIL DAILY 85W – 140<br>EP GEAR OIL<br>CHANGE EVERY 6 MONTHS |
|-------------------------|-------------------|-------------------------|---|

## Attaching Tractor

Connect tractor to TPL lower link pins. The slasher is fitted with a stepped pin which will fit either cat 1, 22 mm ( 7/8" ) or cat 2, 30 mm ( 1 1/8" ). Make sure tractor is fitted to correct size and place lynch pin in hole end of pin.

Tighten anti-sway bars / chains (must be firm, not rigid)

Connect top link to tower.

Connect driveshaft to P.T.O. on tractor and clutch / gearbox on slasher, make sure clamp bolts and or Q.R. pins are located in respective grooves. (Failure to do this will result in driveshaft damage).

Tractor lift arms can vary in length. CHECK OPERATIONAL LENGTH OF DRIVESHAFT BEFORE OPERATING SLASHER.

Check length of driveshaft at the highest and lowest positions of tractor lift arms. The driveshaft requires sliding movement of approx. 100 mm (4") to avoid bottoming or pulling apart at maximum operational lengths.

Caution entering & exiting steep gullies or steep ridges may result in drive shaft bottoming out or coming apart. Check drive shaft length before using slasher in extreme conditions.

### **Setting Up Your Slasher**

Your Superior slasher will cut cleanest and requires less horse power to drive when the front of the slasher is set lower than the rear.

Your superior slasher is fitted with stepped blades as standard, or for side discharge self sharpening suction lift will be fitted. These will require approx. 12 mm (1/2") lower setting at the front than the rear.

Adjust this setting to achieve the desired cutting result for your conditions.

### **Mulching**

Your Superior slasher will mulch better if fitted with suction lift blades.

Set the slasher level to the same height front and rear.

For best results detachable mulching plates are available as an optional extra, these are fitted to the rear of the slasher and retain the cut material until full mulch is obtained.

### **Setting Up Your Rear Castor Wheels**

Use the rear wheel adjustment to set the correct stance of the Slasher - lower at the front, higher at the rear.

Adjust the top link to allow the slasher to hinge at the tractor lower lift arms, so that the slasher can follow reasonable ground contours. If top link is too short the slasher will tend to lift off the ground resulting in an uneven cut.

CAUTION: If top link is too long it may allow the slasher to lift too high at the front which will cause damage to driveshaft safety covers or will result in bending driveshaft requiring costly repairs.

## **OPERATION**

Your superior slasher will be set up in the factory to suit your tractor's particular P.T.O. either 540 rpm or 1000 rpm

For best mowing results maintain correct PTO speeds

In heavy going or awkward areas change back a gear or reduce forward speeds rather than reduce PTO speed by throttling back

CAUTION: Entering & exiting steep gully's or steep ridges may result in drive shaft bottoming out or coming apart, check drive shaft length before using slasher in extreme conditions.

### **Clutch Settings**

Clutch settings are best set up in conditions that the slasher is operating in.

- € Operate the slasher in reasonably heavy conditions for approx. 20 to 30 minutes.
- € Switch engine off, remove key from ignition
- € Disengage PTO

### **Clutch Adjustment**

- € Undo lock nuts

- € Tighten (increase spring tension) or loosen (decrease spring tension) adjusting nut by 3/4 turn on each nut.
- € Make sure each of the nuts is adjusted in turn.
- € Do up lock nuts
- € Refer back to Clutch Settings

CAUTION: If clutch is too tight (cold) and there is no opportunity for clutch slip, costly damage to components may result.

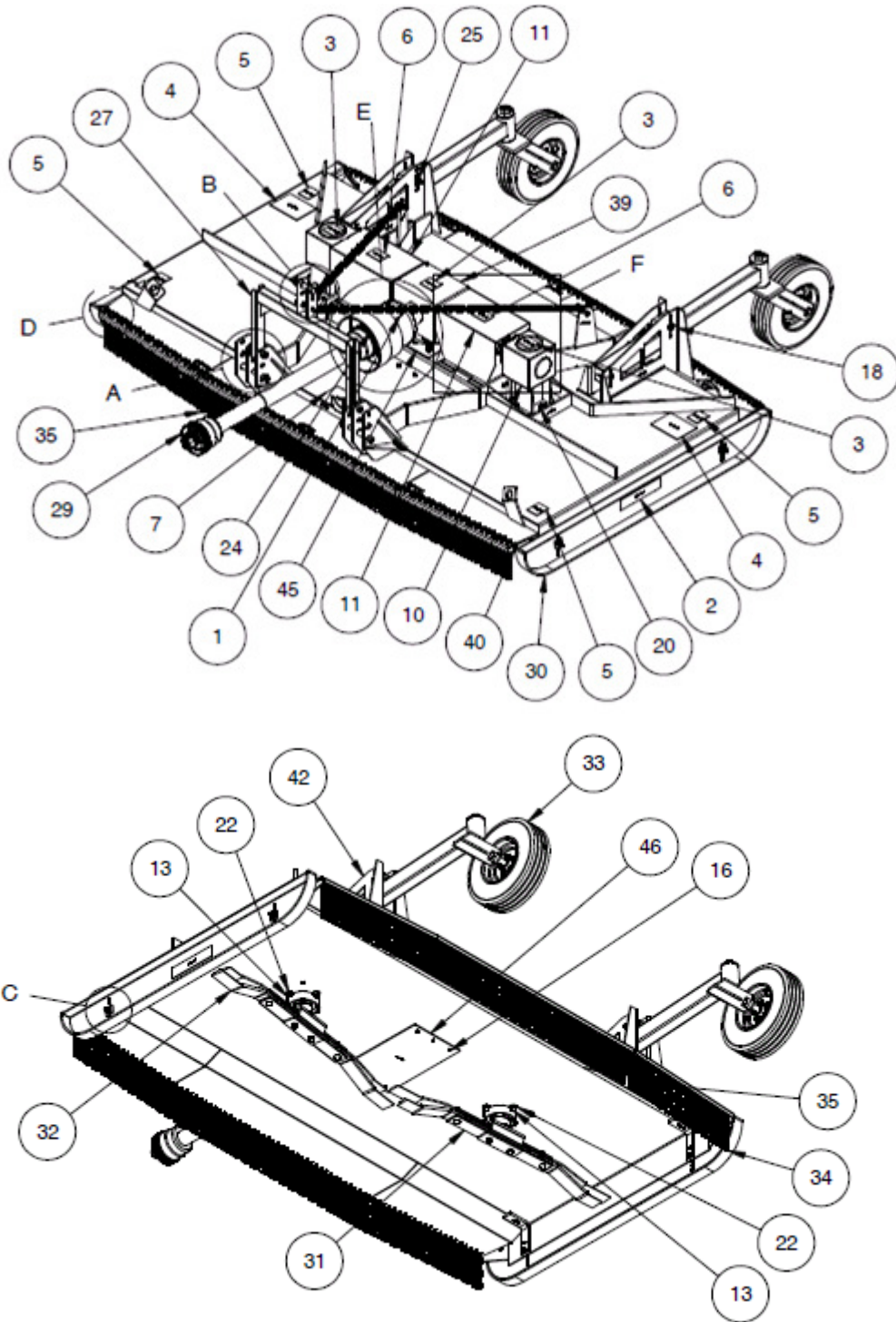
## **GENERAL MAINTENANCE**

It is important that after approx. 30 to 60 minutes operation you should stop the slasher and check all bolts and nuts for tightness. While all bolts are tightened on assembly, impact and working loads cause bedding in of components and early attention to all bolt and nuts will ensure trouble free operation of your Slasher.

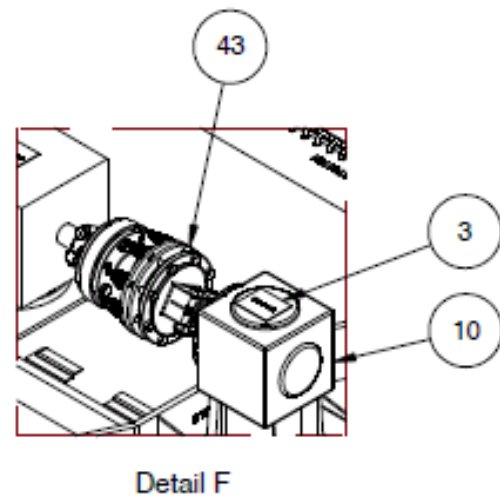
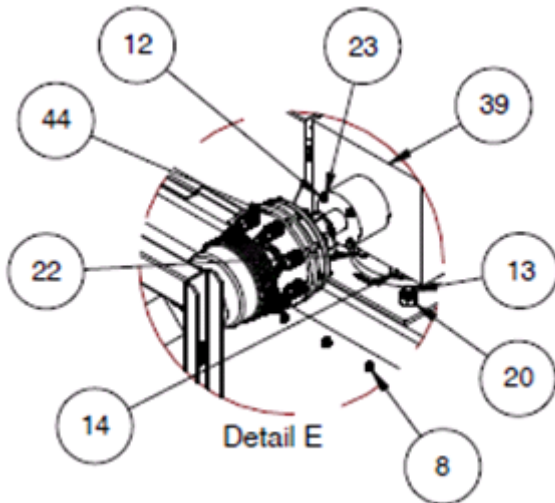
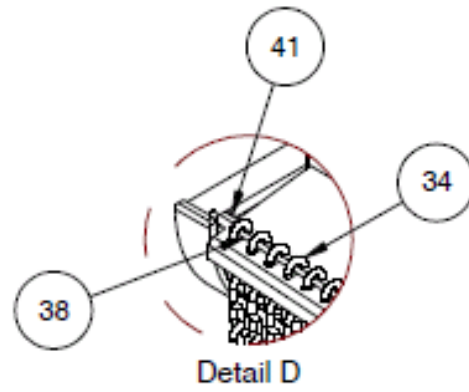
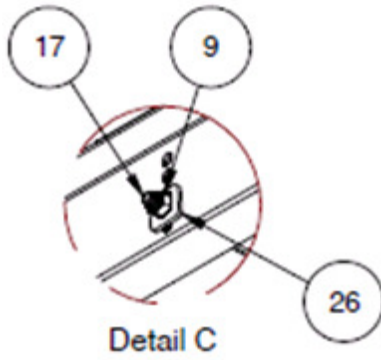
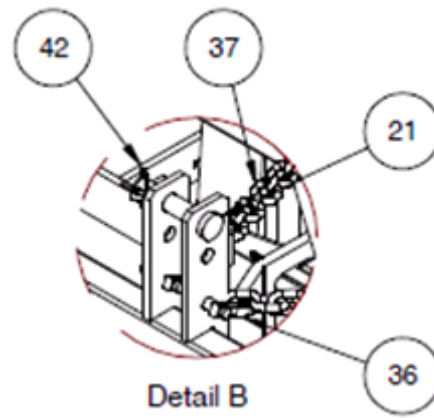
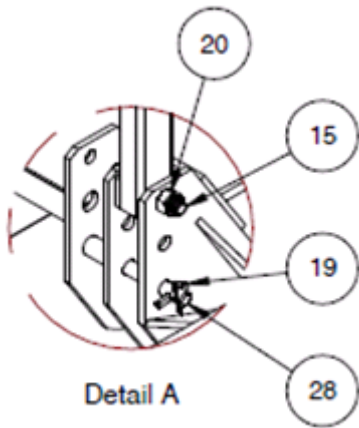
Particular attention should be paid to clamp bolt, clutch bolts, cutting head bolts, blade bolts and nuts, as well as wheel nuts, bearings and castor assembly components.

Early inspection of components after initial start up, and adherence to the lubrication recommendations, will greatly assist in maintaining the durability of your investment.

# LNT 10 SERIES ASSEMBLY





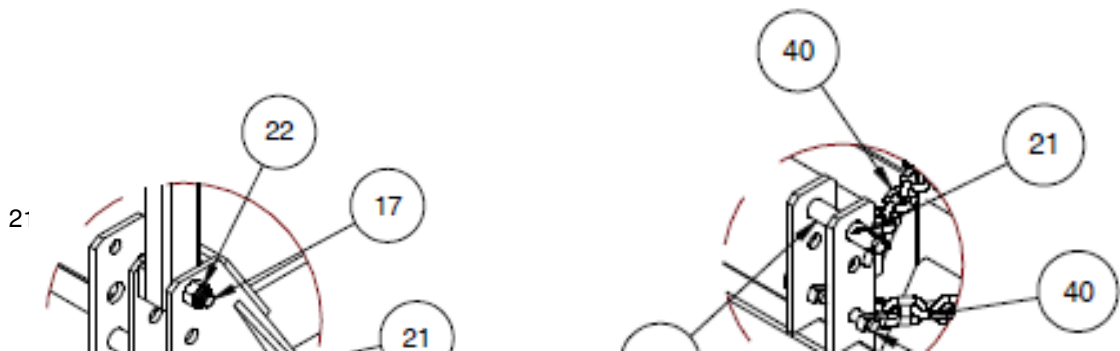
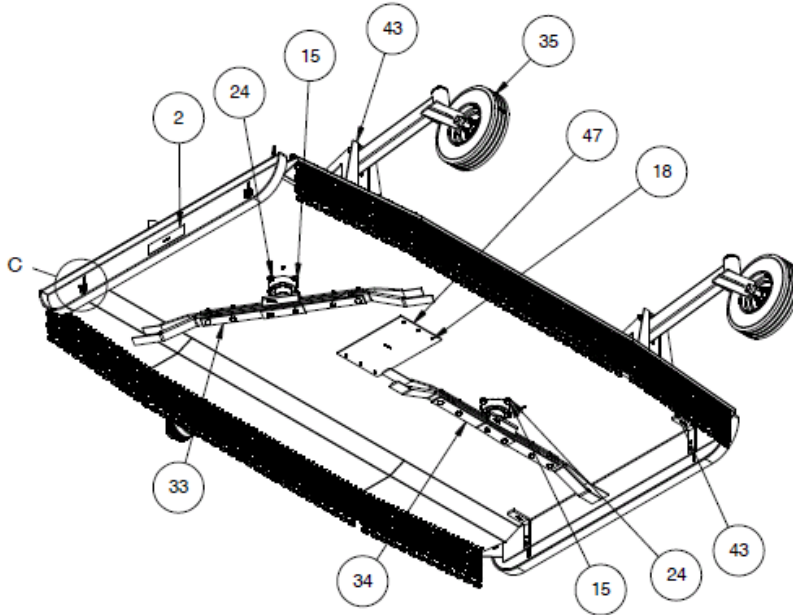
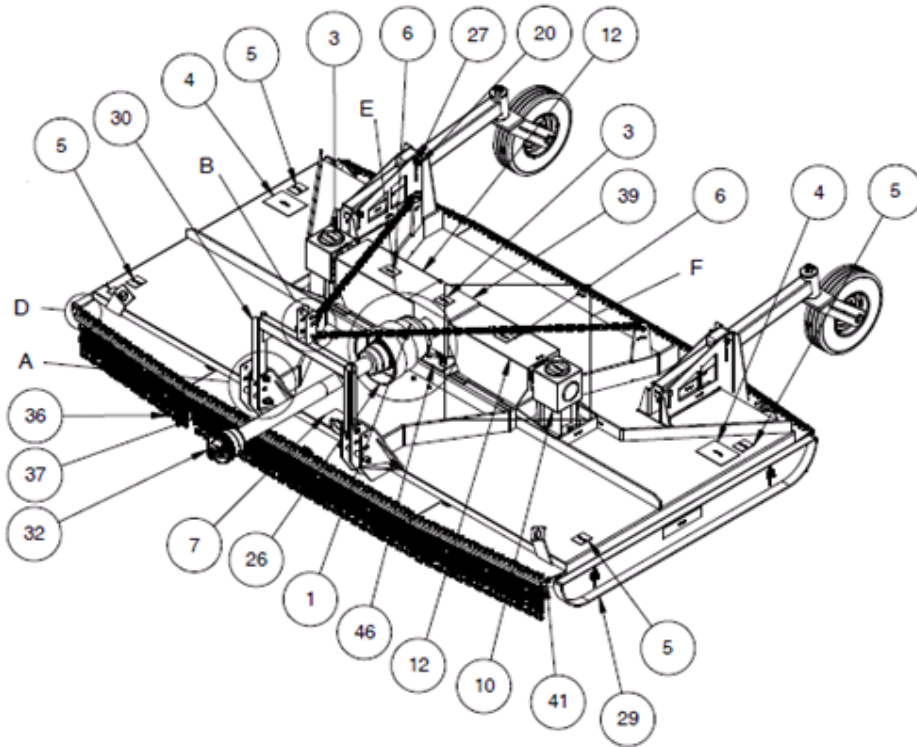


<b>S02097</b>		<b>LNT 10 SLASHER BODY COMPLETE</b>	
		<b>REVISION A FROM 06/2015</b>	
<b>REF NO</b>	<b>PART NO</b>	<b>QTY</b>	<b>DESCRIPTION</b>
1	MI00034-6	1	DECAL "ROTATING DRIVELINE"
2	MI00034-1	2	DECAL "SUPERIOR" (BIG)
3	MI00034-2	3	DECAL "CHECK OIL LEVEL"
4	MI00034-3	2	DECAL "KEEP CLEAR OPEN DISCHARGE"
5	MI00034-5	4	DECAL "ROTATING BLADES"
6	MI00034-8	2	DECAL "THIS COVER MUST NOT BE REMOVED"
7	MI00035-6	1	DECAL "MANUFACTURED BY"
8	S01025	6	HEX NUT 3/8 UNC
9	S01033	4	NYLOC NUT 5/8 UNC
10	S01866	2	GEABOX COMPLETE 120HP RATIO 1.92
11	S02383	2	CLUTCH COVER SIDE
12	S03292	4	BOLT 5/16 UNF X 1" LONG
13	S03388	12	HEX BOLT 3/4 UNF X 2" LONG HT
14	S03390	6	HEX BOLT 3/4 UNF X 2 1/2" LONG
15	S03395	2	HEX BOLT 3/4 UNF X 4 1/2" LONG HT
16	S03478	6	HEX BOLT 3/8 UNC X 1" LONG
17	S03539	4	HEX BOLT 5/8 UNC X 2 1/2" LONG
18	S03558	4	HEX BOLT 3/4 UNC X 5" LONG
19	S04011	3	LYNCH PIN
20	S04067	20	NYLOC NUT 3/4 UNF
21	S04132	1	TPL PIN 1" X 5" LONG CAT 2
22	S04233	18	WASHER FLAT HEAVY ID 21 X OD 38 X 3MM
23	S04241	4	SPRING WASHER 5/16"
24	S04908-1	1	CLUTCH COVER
25	S05067	4	NYLOC NUT 3/4 UNC
26	S05629	4	SKID TAB
27	S07004	1	HEAVY DUTY TOWER ASSY
28	S07008	2	TPL PIN 1.12" DIA X 8" LONG
29	S07226	1	DRIVESHAFT COMPLETE 8 SERIES
30	S07339	2	ADJUSTABLE SKID WITH 48 1/2" HOLE CENTRE
31	S08129	1	CUTTING HEAD ASSEMBLY BOTTOM BLADE SHORT
32	S08130	1	CUTTING HEAD ASSEMBLY TOP BLADE SHORT
33	S08189	2	CASTOR BEAM AND WHEEL ASSEMBLY
34	S08250	84	CHAIN LINK ASSEMBLY 10 DIA X 13 LINKS
35	S08250-2	2	CHAIN LINK ASSEMBLY 10 DIA X 6 LINKS
36	S08320	4	D SHACKLE
37	S08321	2	CHAIN LINK STAY 10 DIA
38	S08322	2	WIRE ROPE 8 DIA X 3150MM LONG
39	S08328	1	GEARBOX COMPLETE 150HP RATIO 1:1
40	S08337	2	WIRE ROPE CLAMP 8MM

41	S08346	2	WIRE FERRULE 8 DIA
42	S08510	1	FABRICATED SLASHER BODY
43	S09086	2	ADAPTOR COUPLING AND CLUTCH ASSEMBLY
44	S09087	1	SLIP CUTCH ASSEMBLY 4 PLATE
45	ST02231	1	CENTRE GEARBOX PLATE
46	ST02234	1	BOTTOM COVER PLATE



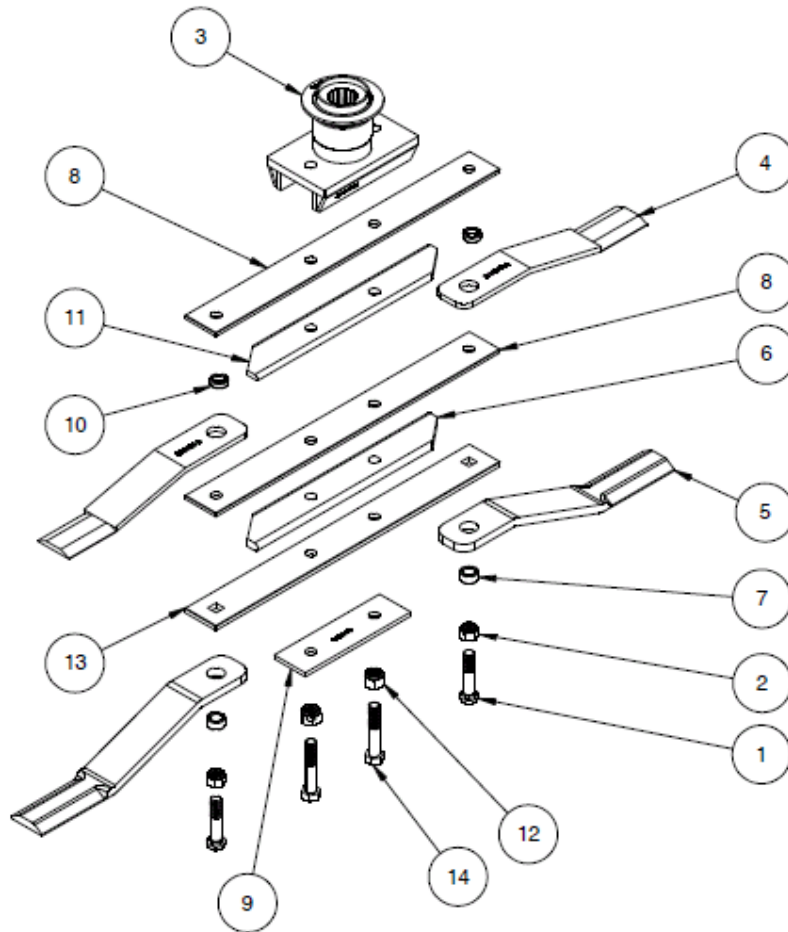
# LNT 12 SERIES ASSEMBLY



S02380	LNT 12 SLASHER BODY COMPLETE		
	REVISION A FROM 06/2015		
REF NO	PART NO	QTY	DESCRIPTION
1	MI00034-6	1	DECAL "ROTATING DRIVELINE"
2	MI00034-1	2	DECAL "SUPERIOR" (BIG)
3	MI00034-2	3	DECAL "CHECK OIL LEVEL"
4	MI00034-3	2	DECAL "KEEP CLEAR OPEN DISCHARGE"
5	MI00034-5	4	DECAL "ROTATING BLADES"
6	MI00034-8	2	DECAL "THIS COVER MUST NOT BE REMOVED"
7	MI00035-6	1	DECAL "MANUFACTURED BY"
8	S01025	6	HEX NUT 3/8 UNC
9	S01033	4	NYLOC NUT 5/8 UNC
10	S01866	2	GEABOX COMPLETE 120HP RATIO 1.92
11	S02360	2	1410 UNIVERSAL CONNECTOR
12	S02384	2	CLUTCH COVER
13	S03292	4	BOLT 5/16 UNF X 1" LONG
14	S03388	4	HEX BOLT 3/4 UNF X 2" LONG HT
15	S03389	8	HEX BOLT 3/4 UNF X 2 1/4" LONG
16	S03390	6	HEX BOLT 3/4 UNF X 2 1/2" LONG
17	S03395	2	HEX BOLT 3/4 UNF X 4 1/2" LONG HT
18	S03478	6	HEX BOLT 3/8 UNC X 1" LONG
19	S03539	4	HEX BOLT 5/8 UNC X 2 1/2" LONG
20	S03558	4	HEX BOLT 3/4 UNC X 5" LONG
21	S04011	3	LYNCH PIN
22	S04067	14	NYLOC NUT 3/4 UNF
23	S04132	1	TPL PIN 1" X 5" LONG CAT 2
24	S04233	18	WASHER FLAT HEAVY 21 ID X 38 OD X 3MM
25	S04241	4	SPRING WASHER 5/16"
26	S04908-1	1	CLUTCH COVER
27	S05067	4	NYLOC NUT 3/4 UNC
28	S05629	4	SKID TAB
29	S06640-2	2	ADJUSTABLE SKID WITH 54 1/4" HOLE CENTRE
30	S07004	1	HEAVY DUTY TOWER ASSEMBLY
31	S07008	2	TPL PIN 1.12" DIA X 8" LONG
32	S07226	1	DRIVESHAFT COMPLETE 8 SERIES
33	S08128	1	CUTTING HEAD ASSEMBLY TOP BLADE SHORT
34	S08131	1	CUTTING HEAD ASSEMBLY BOTTOM BLADE SHORT
35	S08189	2	CASTOR BEAM AND WHEEL ASSEMBLY
36	S08250	100	CHAIN LINK ASSEMBLY 10 DIA X 13 LINKS
37	S08250-2	2	CHAIN LINK ASSEMBLY 10 DIA X 6 LINKS
38	S08320	4	D SHACKLE
39	S08328	1	GEARBOX COMPLETE 150HP RATIO 1:1
40	S08330	2	CHAIN LINK STAY 10 DIA
41	S08337	2	WIRE ROPE CLAMP 8MM

42	S08346	2	WIRE FERRULE 8 DIA
43	S08511	1	FABRICATED SLASHER BODY
44	S08548	2	WIRE ROPE 8 DIA
45	S09087	3	SLIP CLUTCH ASSEMBLY 4 PLATE
46	ST02231	1	CENTRE GEARBOX PLATE
47	ST02234	1	BOTTOM COVER PLATE

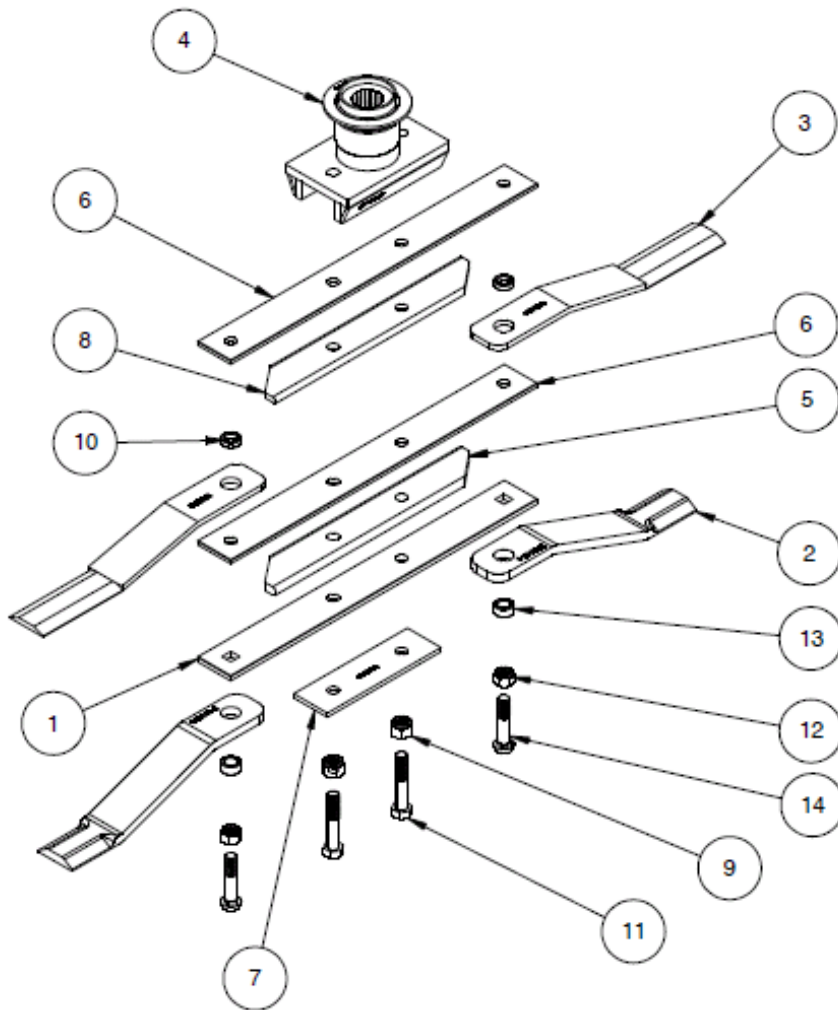
## LNT 10 CUTTING HEAD ASSEMBLY



S08130	<b>LNT 10 CUTTING HEAD ASSEMBLY TOP SHORT REVISION A FROM 06/2015</b>		
REF NO	PART NO	QTY	DESCRIPTION
1	S08127	2	DOME HEAD BOLT $\frac{3}{4}$ UNC X 3 $\frac{1}{2}$ " LONG
2	S05067	2	NYLOC NUT $\frac{3}{4}$ UNC
3	S04051	1	CUTTING HEAD ADAPTOR
4	S02424-2	2	BLADE 75X10 SHORT 1 $\frac{1}{2}$ " STEP
5	S02143	2	BLADE 75X16 3" STEP
6	S04057	1	SPACER 75 X 16 19" LONG
7	S05069	2	BLADE BUSH 16MM
8	S04058	2	HEADFLAT ROUND HOLE 75 X 8 27" LONG
9	S04060	1	HEADFLAT RETAINER PLATE
10	S04068	2	BLADE BUSH 10MM
11	S04061	1	SPACER 75 X 10MM 19"
12	S04067	2	NYLOC NUT $\frac{3}{4}$ UNF



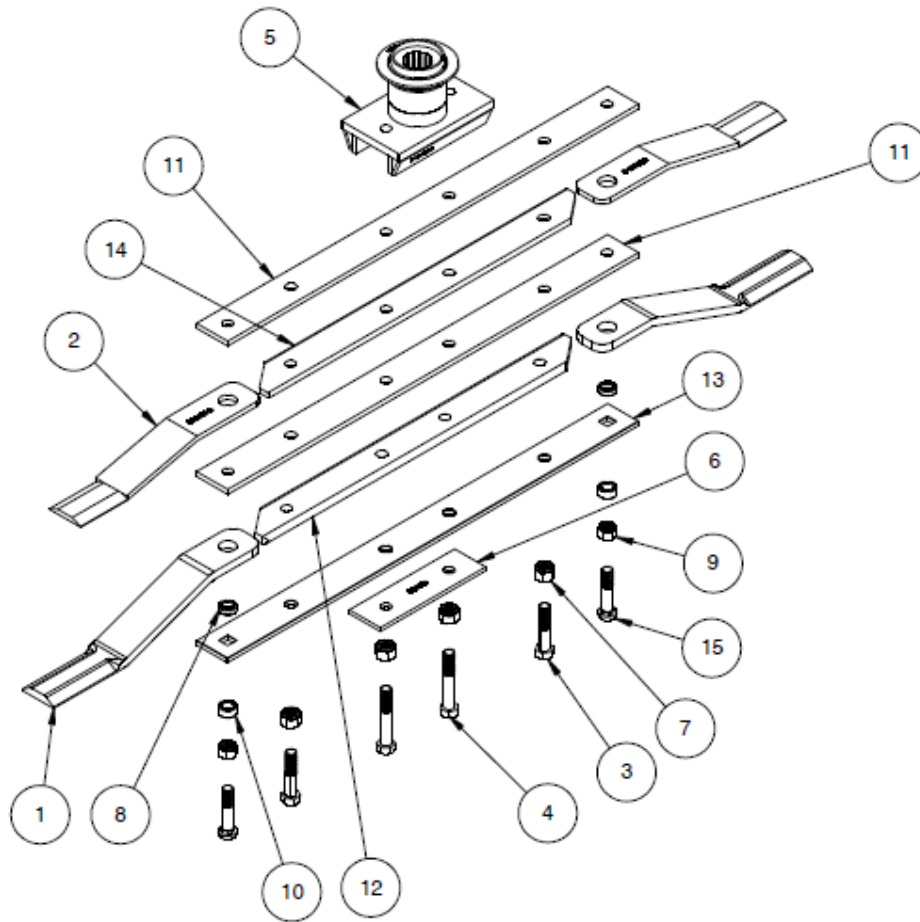
13	S02112	1	HEADFLAT SQUARE HOLE 75 X 10 27" LONG
14	S05066	2	HEX BOLT $\frac{3}{4}$ UNF X 4" LONG



S08129		<b>LNT 10 CUTTING HEAD ASSEMBLY BOTTOM SHORT</b>	
		<b>REVISION A FROM 06/2015</b>	
REF NO	PART NO	QTY	DESCRIPTION
1	S02112	1	HEADFLAT SQUARE HOLES 75 X 10 27" LONG
2	S02143-2	2	BLADE SHORT 14" 75 X 16 3" STEP
3	S02424	2	BLADE 20" 75 X 10 1 1/2" STEP
4	S04051	1	CUTTING HEAD ADAPTOR 75HP
5	S04057	1	SPACER 75 X 16 19" LONG
6	S04058	2	HEADFLAT ROUND HOLE 75 X 8 27" LONG
7	S04060	1	HEADFLAT RETAINER PLATE
8	S04061	1	SPACER 75 X 10 19" LONG
9	S04067	2	NYLOC NUT 3/4 UNF
10	S04068	2	BLADE BUSH 10MM
11	S05066	2	HEX BOLT 3/4 UNF X 4" LONG

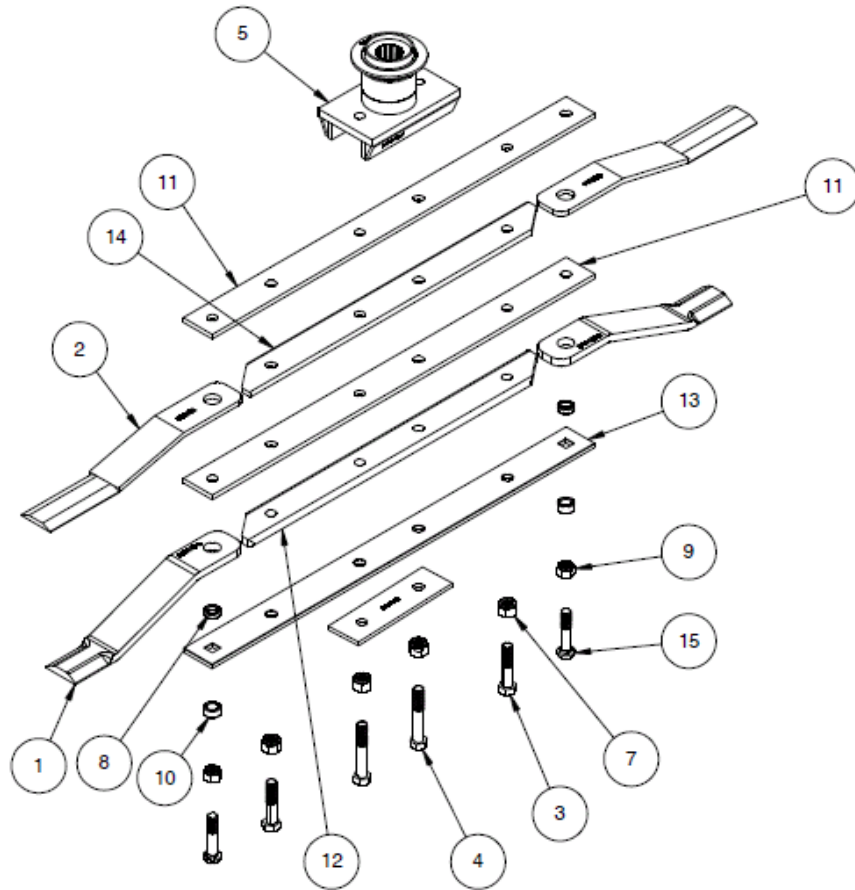
12	S05067	2	NYLOC NUT 3/4 UNC
13	S05069	2	BLADE BUSH 16MM
14	S08127	2	DOME HEAD BOLT 3/4 UNC X 3 1/2" LONG

## LNT 12 CUTTING HEAD ASSEMBLY



<b>S08128 LNT 12 CUTTING HEAD ASSEMBLY TOP SHORT</b>			
<b>REVISION A FROM 07/2015</b>			
<b>REF NO</b>	<b>PART NO</b>	<b>QTY</b>	<b>DESCRIPTION</b>
1	S02143	1	BLADE 75X16 3" STEP
2	S02424-2	2	BLADE 75X10 1 1/2" STEP
3	S03393	2	HEX BOLT 3/4 UNF X 3 1/2" LONG
4	S03395	1	HEX BOLT 3/4 UNF X 4 1/2" LONG
5	S04051	1	CUTTING HEAD ADAPTOR 75HP
6	S04060	2	HEADFLAT RETAINING PLATE
7	S04067	1	NYLOC NUT 3/4 UNF
8	S04068	1	BLADE BUSH 10MM
9	S05067	2	NYLOC NUT 3/4 UNC
10	S05069	2	BLADE BUSH 16MM
11	S06052	2	HEADFLAT ROUND HOLES 75X10 39" LONG
12	S06055	2	SPACER 75X16 31" LONG
13	S06056	2	HEADFLAT SQUARE HOLE 75X10 39" LONG
14	S06061	2	SPACER 75X10 31" LONG

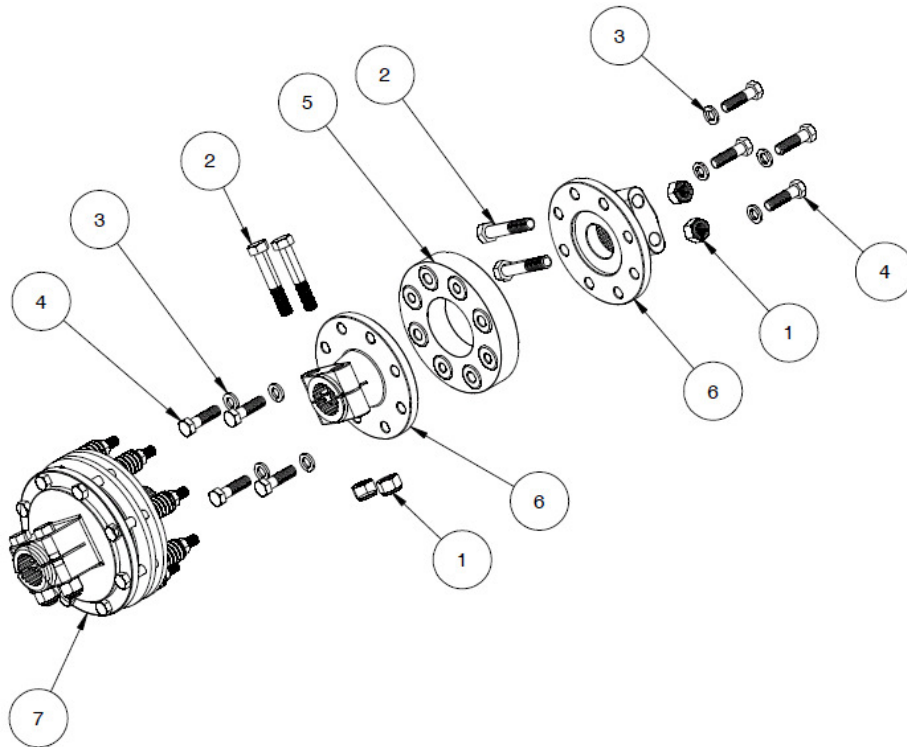
15	S08127	2	DOME HEAD BOLT $\frac{3}{4}$ UNC X 3 $\frac{1}{2}$ " LONG
----	--------	---	--



S08131		<b>LNT 12 CUTTING HEAD ASSEMBLY BOTTOM SHORT</b>	
		<b>REVISION A FROM 07/2015</b>	
<b>REF NO</b>	<b>PART NO</b>	<b>QTY</b>	<b>DESCRIPTION</b>
1	S02143-2	2	BLADE SHORT 75X16 3" STEP
2	S02424	2	BLADE 75X10 20" LONG 1 1/2" STEP
3	S03393	2	HEX BOLT 3/4 UNF X 3 1/2" LONG
4	S03395	2	HEX BOLT 3/4 UNF X 4 1/2" LONG
5	S04051	1	CUTTING HEAD ADAPTOR 75HP
6	S04060	1	HEADFLAT RETAINING PLATE
7	S04067	4	NYLOC NUT 3/4 UNF
8	S04068	2	BLADE BUSH 10MM
9	S05067	2	NYLOC NUT 3/4 UNC
10	S05069	2	BLADE BUSH 16MM
11	S06052	2	HEADFLAT ROUND HOLE 75X10 39" LONG
12	S06055	1	SPACER 75X10 31" LONG
13	S06056	1	HEADFLAT SQUARE HOLE 75X10 39" LONG
14	S06061	1	SPACER 75X10 31" LONG
15	S08127	2	DOME HEAD BOLT 3/4 UNC X 3 1/2" LONG



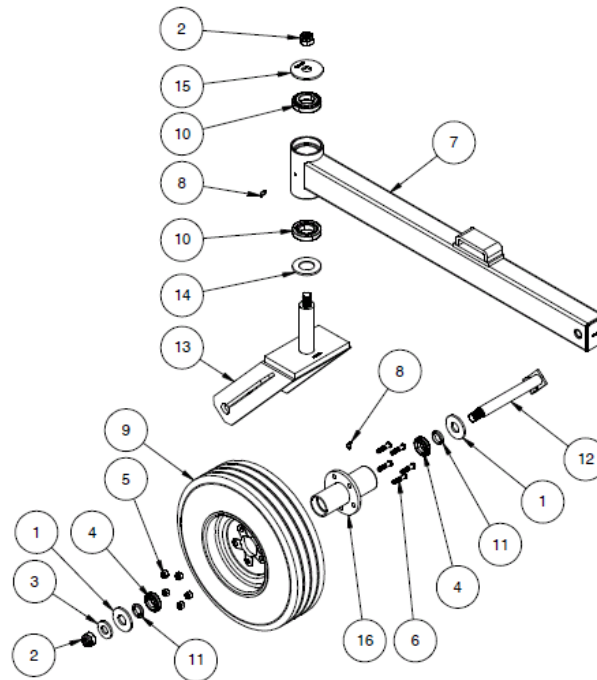
## LNT 10 ADAPTOR COUPLING & CLUTCH ASSEMBLY



S09086		ADAPTOR COUPLING & CLUTCH ASSEMBLY	
		REVISION A FROM 07/2015	
REF NO	PART NO	QTY	DESCRIPTION
1	S01033	4	NYLOC NUT 5/8"UNC
2	S03542	4	HEX BOLT 5/8 UNC 3 1/2" LONG
3	S04249	8	SPRING WASHER M 14 X 3.5MM
4	S04958-2	8	HEX BOLT M 14 X 50MM LONG
5	S04959	1	RUBBER COUPLER
6	S09085	2	CLUTCH BACK PLATE 1 3/4 X 20
7	S09087	1	SLIP CLUTCH ASSEMBLY



## LNT 10 & 12 CASTOR ASSEMBLY



S08189	<b>CASTOR BEAM AND WHEEL ASSEMBLY</b>		
<b>REVISION B FROM 06/2015</b>			
REF NO	PART NO	QTY	DESCRIPTION
1	S01008	2	WASHER 1 1/4" X T6
2	S01100	2	NYLOC NUT 1" UNF THIN
3	S01804	1	1" HEAVY FLAT WASHER
4	S02223	2	BEARING TPR ROL LM67048 LM67000
5	S02225	5	HEX NUT 7/16 UNF
6	S02237	5	WHEEL HUB STUD 7/16" UNF
7	S02379	1	CASTOR BEAM 46" LONG
8	S04120	2	GREASE NIPPLE 1/8" BSP 45 DEG
9	S04269-1	1	MONOFIL CASTOR WHEEL (520 X 10)
10	S04646	2	BEARING 30209 32105
11	S05103	2	SPACER SUIT 1 1/4" AXLE
12	S05229-3	1	AXLE 1 1/4" SHAFT
13	S08156	1	FORK
14	S08158	1	CASTOR THRUST WASHER
15	S08159	1	TOP THRUST WASHER
16	S08190	1	WHEEL HUB 5 STUD