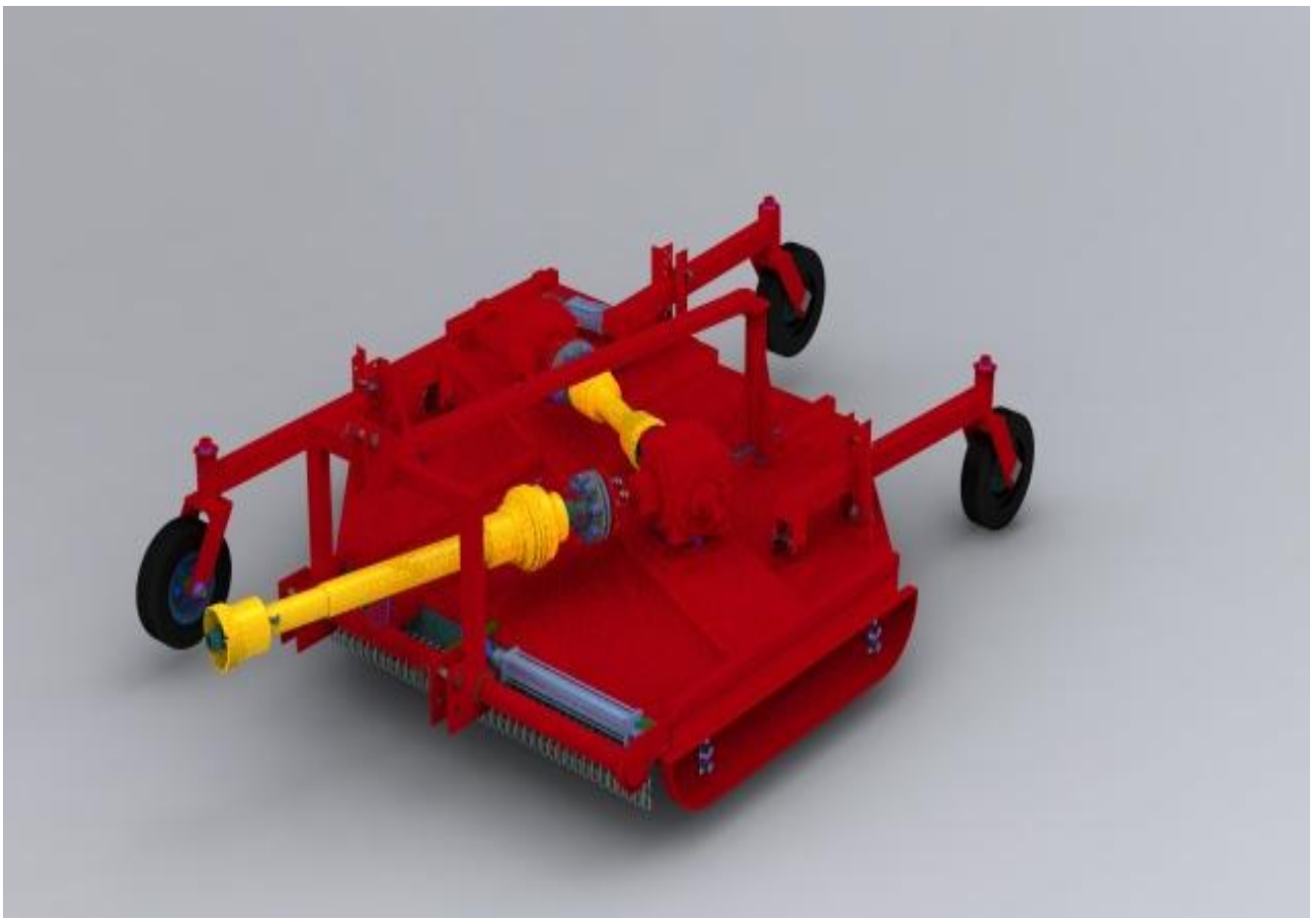


INSTRUCTION AND PARTS MANUAL FOR LCNT240 HYDRAULIC SHIFT SLASHER



INDEX

	PAGE
• CORPORATE PHILOSOPHY	1
• OPERATIONAL SAFETY INSTRUCTIONS	2
• HAZARDS & SAFETY GUIDE	3 - 4
• OPERATING, CARE & MAINTENANCE	5 - 6
• MAINTENANCE SCHEDULE	7
• MAIN BODY ASSEMBLY AND COMPONENTS	8
• BILL OF MATERIAL FOR MAIN BODY ASSEMBLY`	9
• FABRICATED BODY	10
• TPL TOWER AND CASTOR WHEEL ASSEMBLY	11
• CLUTCH ASSEMBLY	12
• DRIVE SHAFT ASSEMBLY 6 SERIES	13
• WIDE ANGLE DRIVE SHAFT ASSEMBLY	14
• CUTTING HEAD ASSEMBLY	15
• OWNERS NOTES / WARRANTY CARD	16

**SUPERIOR ROTARY SLASHERS
MAINTENANCE SCHEDULE
TO SUIT LCNT240 HYDRAULIC SHIFT SLASHER**

The diagram illustrates the maintenance schedule for the LCNT240 hydraulic shift slasher. It features a detailed line drawing of the machine's internal components, including the hydraulic cylinder, shift lever, and various joints. Maintenance tasks are indicated by numbered circles (1, 2, 6) and text labels:

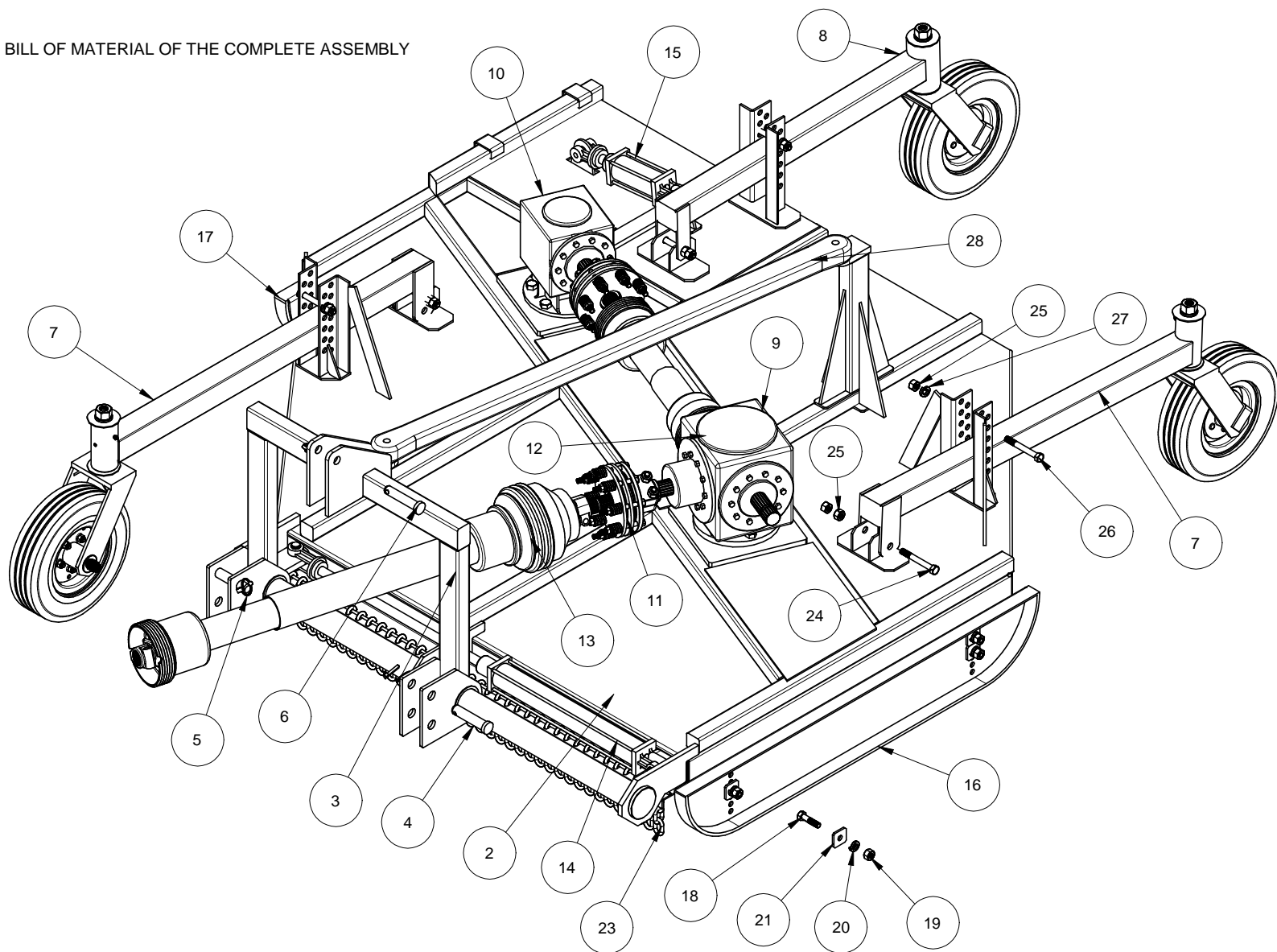
- 1 DAILY:** Indicated at several points, likely referring to daily checks of hydraulic fluid levels and joint lubrication.
- 2 DAILY:** Indicated at the bottom right, likely referring to the gearbox breather and level.
- 6 OIL:** Indicated at the top left and top right, likely referring to the main hydraulic oil level.
- GEARBOX BREATHER:** A label pointing to the breather component.
- 'GEARBOX LEVEL:** A label pointing to the gearbox level component.

CHECK OIL DAILY
85W-140EP GEAR OIL
CHANGE EVERY 6 MONTHS

LCNT240 HYDRAULIC SHIFT SLASHER COMPLETE ASSEMBLY 1

PLEASE NOTE:

* REFER PAGE 9 FOR BILL OF MATERIAL OF THE COMPLETE ASSEMBLY



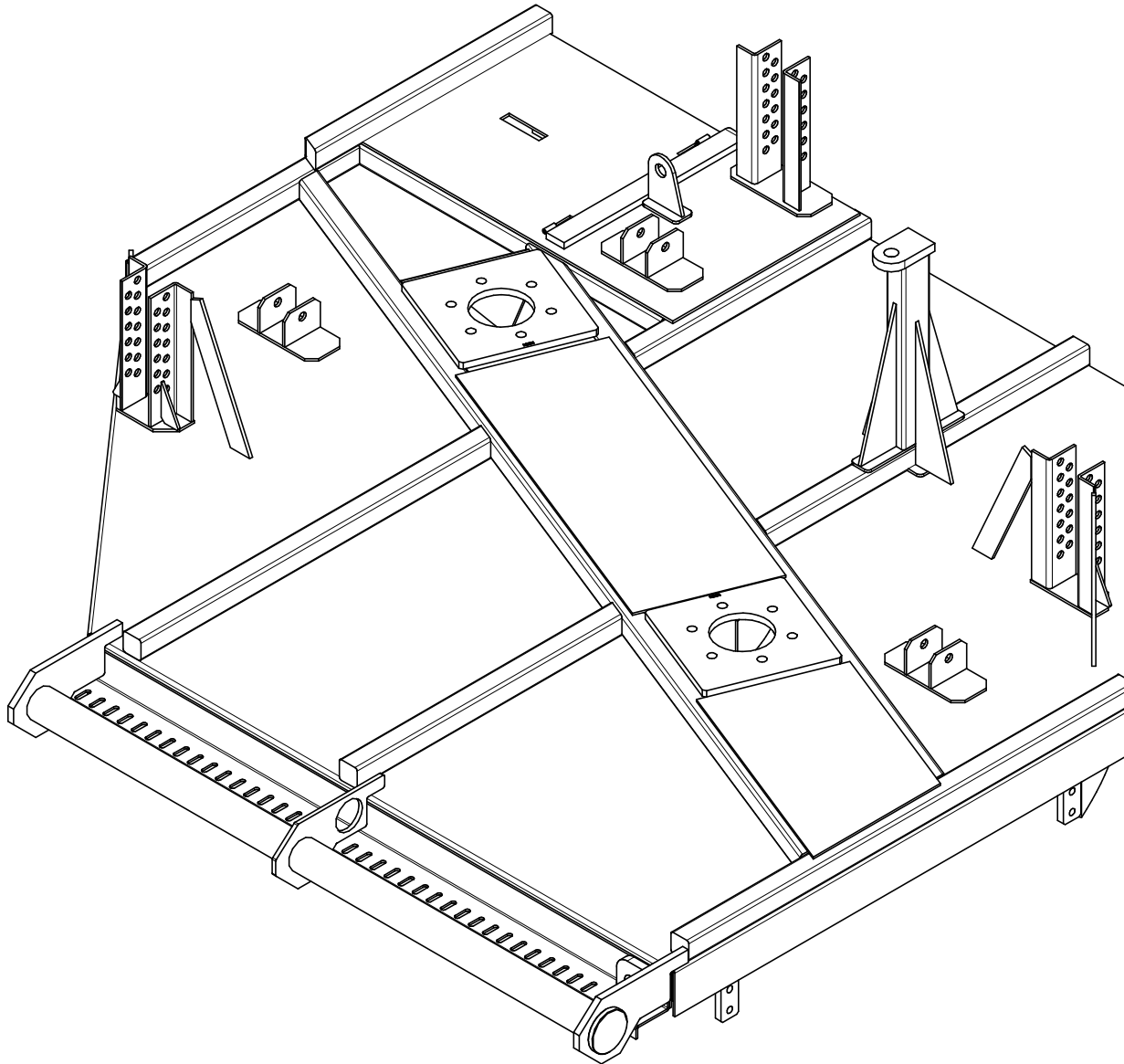
LCNT240 HYDRAULIC SHIFT SLASHERS

PLEASE NOTE:

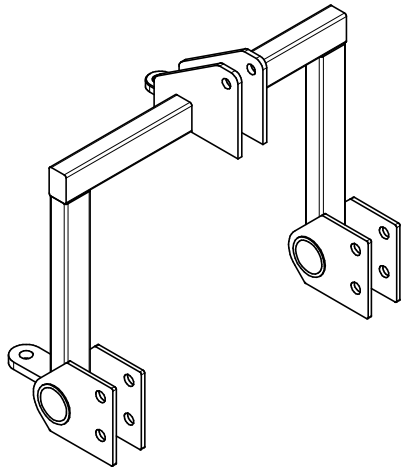
*** REFER PAGE 8 FOR COMPLETE GEOMETRIC DETAILS OF THE SLASHER.**

ITEM #	PART NUMBER	PART DESCRIPTION	QTY.	PAGE #	COMMENTS
1	S07273	LCNT240 COMPLETE ASSEMBLY	1	8	
2	S07276	MAIN BODY FABRICATED	1	10	
3	S07275	TPL TOWER	1	11	
4	S07008	TPL PINS	2	8	
5	S04011	LINCH PINS	3	8	
6	S04132	TOP LINK PIN	1	8	
7	S07277	CASTOR BEAM 49" AND WHEEL ASSEMBLY	3	11	
8	S07278	CASTOR BEAM 39" AND WHEEL ASSEMBLY	1	11	
9	S07297	GEAR BOX 4 WAY 150HP 1.93 RATIO	1	-	
10	S07296	GEAR BOX 135HP 1:1 RATIO	1	-	
11	S09402	CLUTCH ASSEMBLY	2	12	
12	S07917	DRIVE SHAFT STANDARD 1 3/4" SPLINED ENDS	1	13	
13	S08203	WIDE ANGLE DRIVE SHAFT	1	14	
14	S07298	MAIN HYDRAULIC CYLINDER	1	-	
15	S08405	HYDRAULIC CYLINDER FOR CHUTE	1	-	
16	S07279	ADJUSTABLE SKID 55 1/2"	1	8	
17	S07280	ADJUSTABLE SKID 22 1/2"	1	8	
18	S03539	SKID BOLT 5/8UNCX2 1/2" LONG	4	8	
19	S01033	SKID NUT 5/8 UNC	4	8	
20	S04224	SPRING WASHERS FOR SKID	4	8	
21	S05639	SKID TABS	4	8	
22	S05517-1	CUTTING HEAD ASSEMBLY	2	15	
23	S02642	CHAIN LINKS DIA10	(AS REQD.)	8	
24	S03545	BOLT 5/8UNC X5"	3	8	
25	S01033	NUT 5/8UNC	12	8	
26	S03544	BOLT 5/8UNCX 4 1/2"	6	8	
27	S04244	SPRING WASHERS	6	8	
28	S07274	PULL BAR	1	8	

FABRICATED BODY FOR LCNT240 HYDRAULIC SHIFT SLASHER



PART NUMBER: S07276
QTY. 1 OFF



LCNT240 HYDRAULIC SHIFT SLASHER

TPL TOWER
PART NUMBER: S07275
QTY: 1 NO.

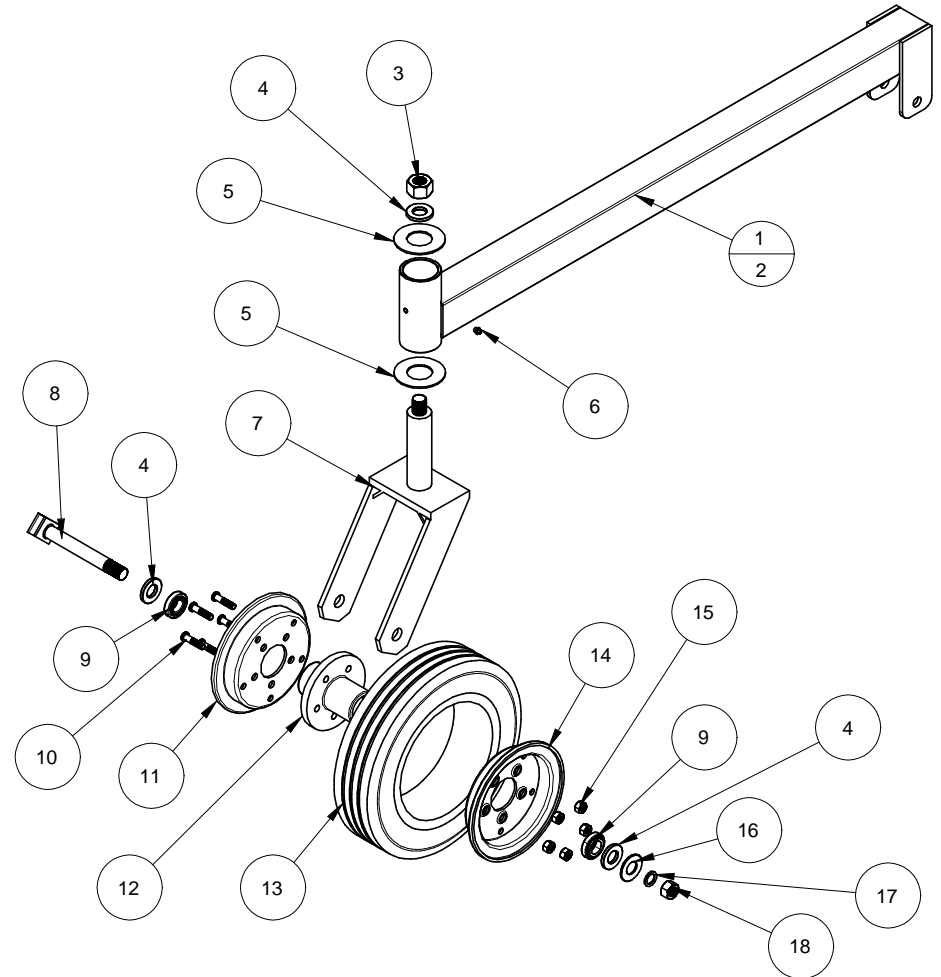
CASTOR ASSEMBLY AND WHEEL ASSEMBLY COMPLETE

PLEASE NOTE:

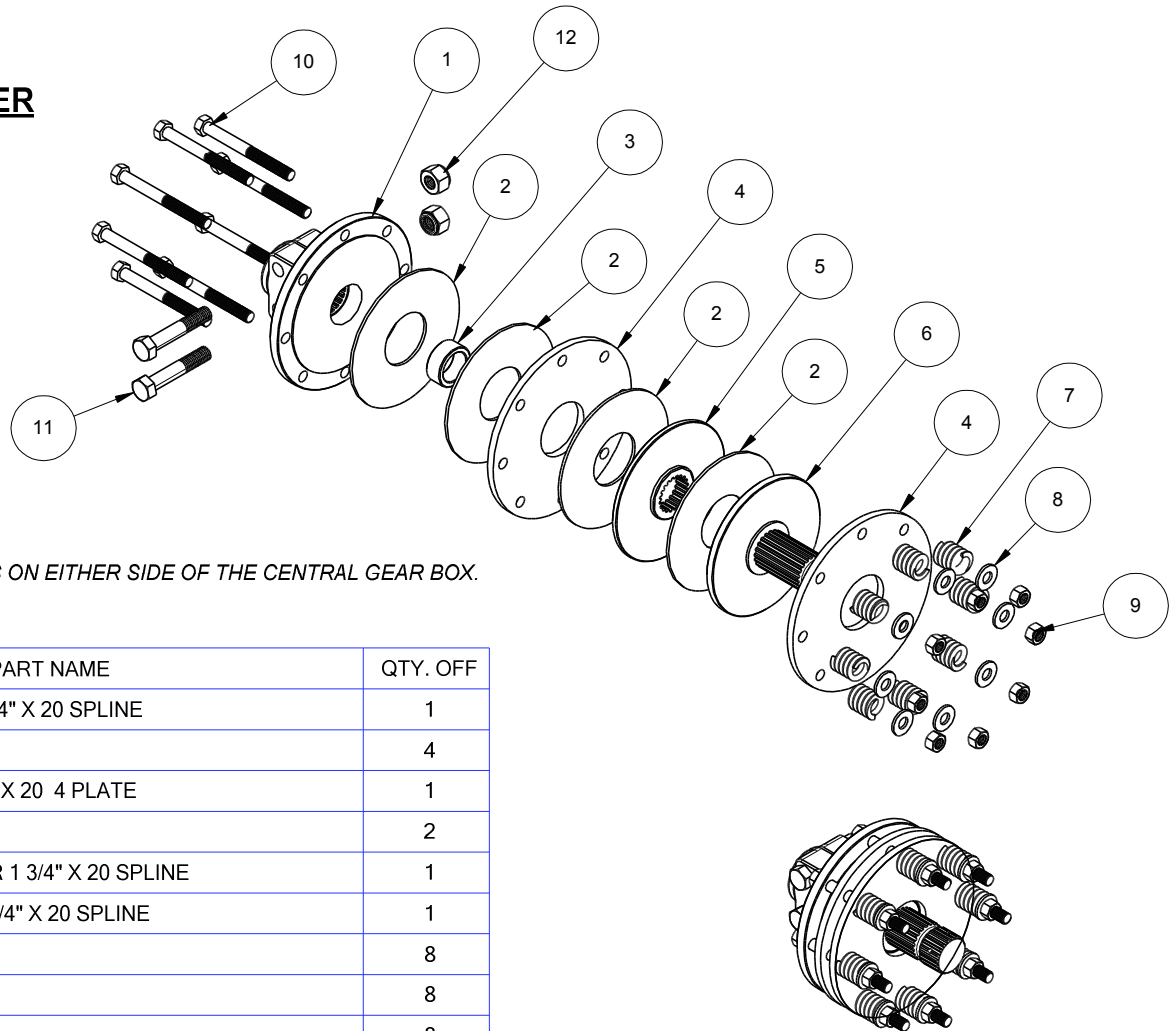
*BILL OF MATERIAL TABLE SHOWN HERE IS FOR CASTOR ASSEMBLY ONLY.

*THE QTY MENTIONED IN THE TABLE IS FOR SINGLE ASSEMBLY.

ITEM #	PART #	PART NAME	QTY/ ASSY
1	S02379	CASTOR BEAM TYPE 2_3"x4"x49"	1
2	S04591	CASTOR BEAM TYPE 2_3"x4"x39"	1
3	S01038	HEX NUT "1UNF	1
4	S04078	WASHER 1" X 1/4"THICK	3
5	S08158	WASHER OD 3 3/4" X ID 1 7/8"	2
6	S04085	GREASE NIPPLE	1
7	S04092-2	FORK DOUBLE LEG 400 X 8 1 3/4" SHAFT	1
8	S04082	WHEEL AXLE 1" DIA X 8" LONG X 1" THREAD	1
9	S04084	SINGLE TPR BRG_L 44600-L 44610	2
10	S02237	WHEEL HUB STUD_7/16" UNF X1 1/2" LONG	5
11	S05078	SPLIT RIM PLAIN 400X8_5 STUD	1
12	S05080	HUB 5 STUD SUPERIOR	1
13	S07255	SOLID TYRE ITALIAN_400X8	1
14	S05079	SPLIT RIM EMBOSSED 400X8_5 STUD	1
15	S02225	HEX NUT 7/16" UNF	5
16	S04227	FLAT LIGHT WASHER 1INCH	1
17	S04226	WASHER 3/4" X T3	1
18	S05067	HEX NUT 3/4" UNC	1
19	S05083	WHEEL HUB ASSEMBLY COMPLETE (ITEM 4,8 TO 18)	1
20	S07277	CASTOR BEAM 49" AND WHEEL ASSEMBLY COMPLETE	1
21	S07278	CASTOR BEAM 39" AND WHEEL ASSEMBLY COMPLETE	1
22	S04106-1	S02379_CASTOR BEAM TYPE 2_1 1-2 TUBE ID_3"x3"x49"	1



STANDARD SLIP CLUTCH ASSEMBLY FOR LCNT240 HYDRAULIC SHIFT SLASHER



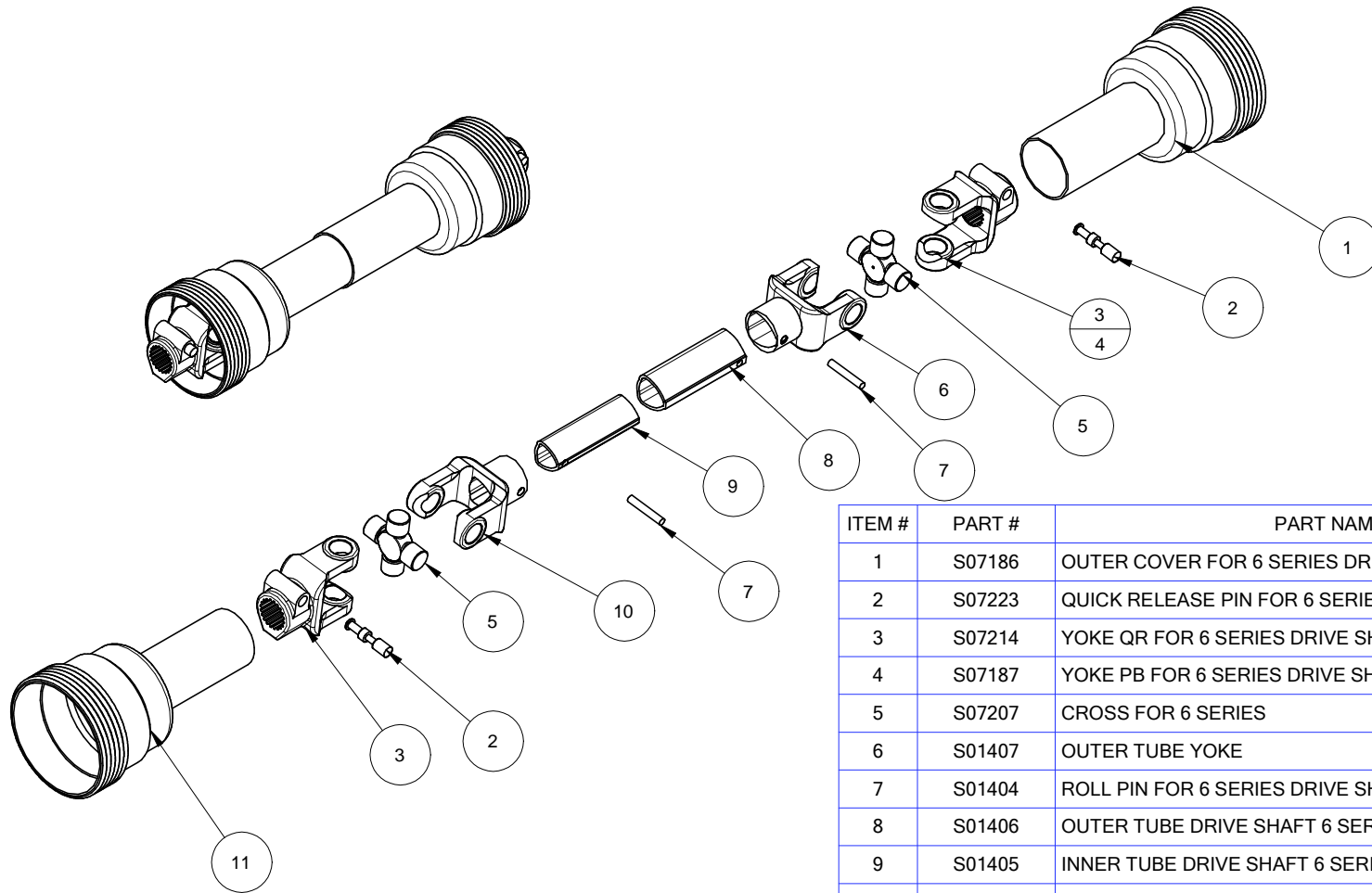
PLEASE NOTE:

* ASSEMBLY DETAILED HERE IS FOR A SINGLE ASSEMBLY.

* LCNT240 SLASHERS CONSIST OF TWO SLIP CLUTCH ASSEMBLIES ON EITHER SIDE OF THE CENTRAL GEAR BOX.

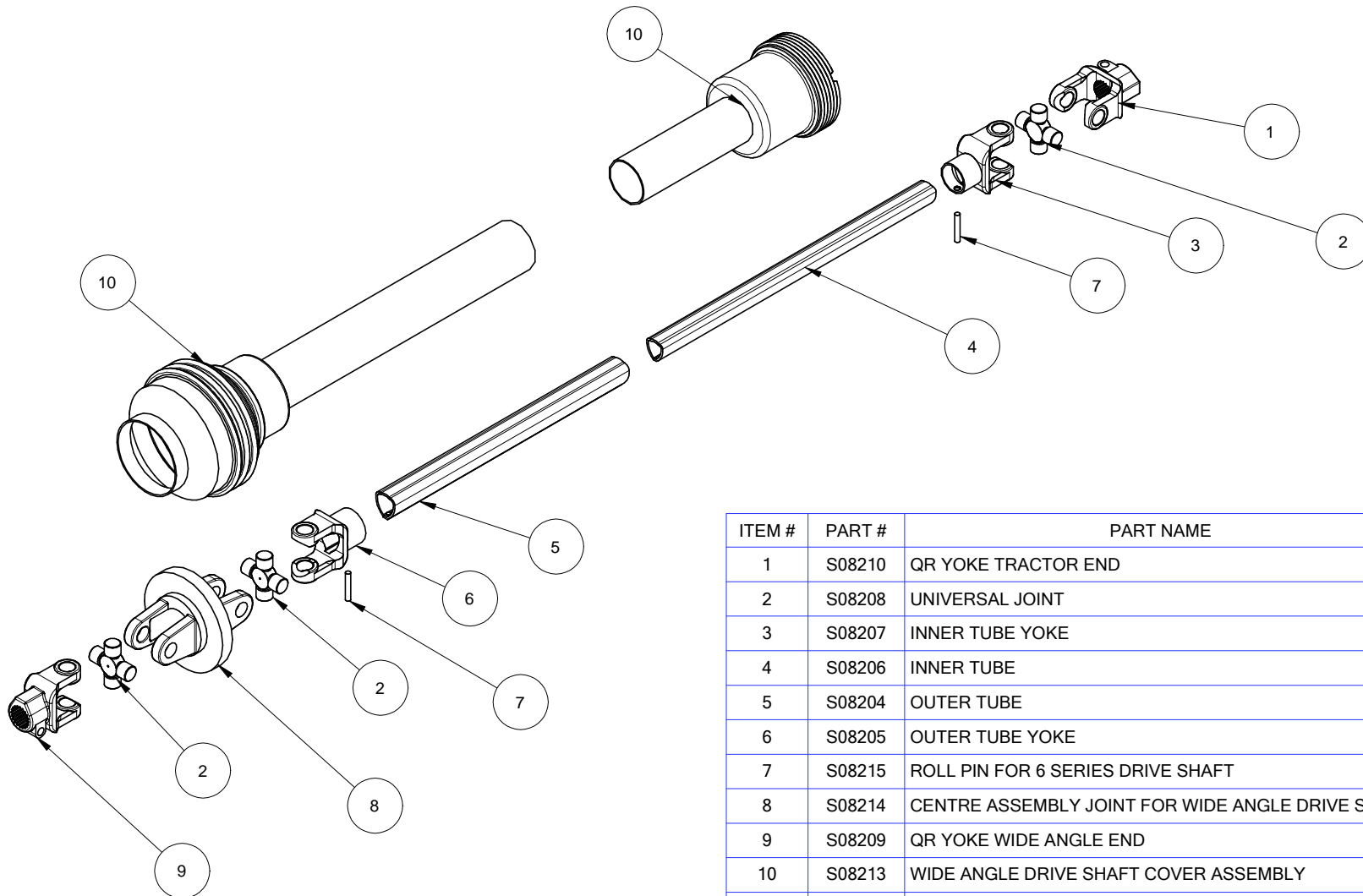
ITEM NO.	PART NUMBER	PART NAME	QTY. OFF
1	S02317	CLUTCH BACK PLATE 1 3/4" X 20 SPLINE	1
2	S04027	CLUTCH LININGS	4
3	S04103	BUSH FOR CLUTCH 1 3/4" X 20 4 PLATE	1
4	S04026-1	CLUTCH FRONT PLATE	2
5	S06401	CLUTCH SLIDING SPACER 1 3/4" X 20 SPLINE	1
6	S06400	CLUTCH DRIVE PLATE 1 3/4" X 20 SPLINE	1
7	S04100	CLUTCH SPRING	8
8	S04224	WASHER 1/2" X T3	8
9	S02334	NUT 1/2" WHIT	8
10	S02334	BOLT 1/2" WHIT X 5 LONG	8
11	S03230	HEX BOLT 5/8" UNC 3 1/2" LONG	2
12	S01033	HEX NUT 5/8" UNC	2
13	S09087	SLIP CLUTCH ASSEMBLY COMPLETE	1

DRIVE SHAFT 6 SERIES FOR LCNT240
WITH 1 3/4" X 20 SPLINE



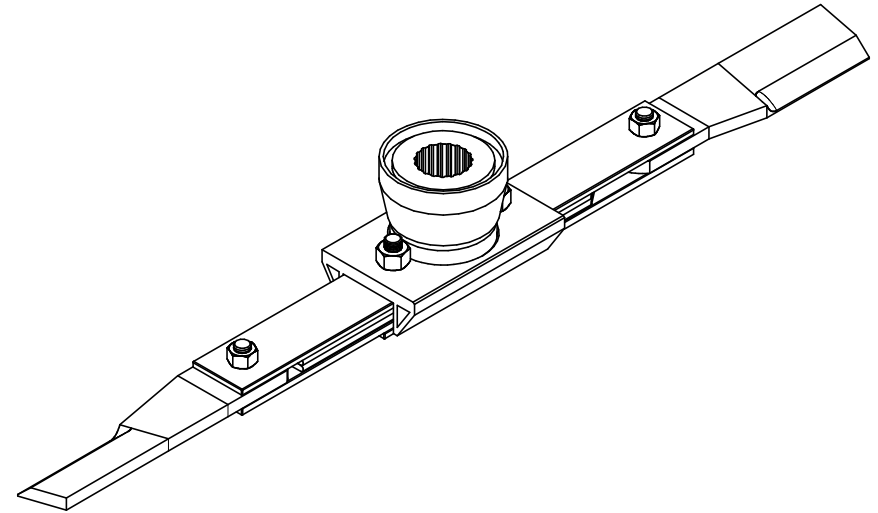
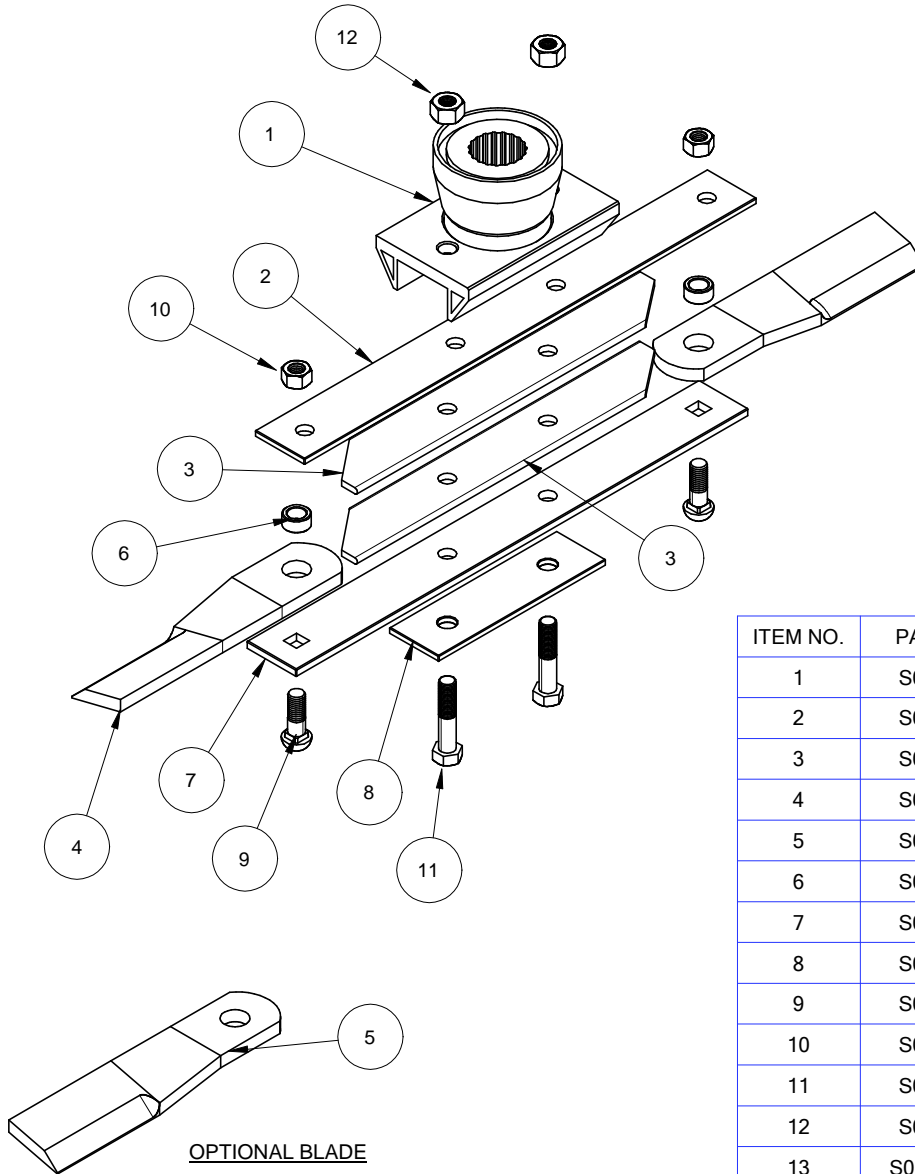
ITEM #	PART #	PART NAME	QTY
1	S07186	OUTER COVER FOR 6 SERIES DRIVE SHAFT	1
2	S07223	QUICK RELEASE PIN FOR 6 SERIES DRIVE SHAFT	2
3	S07214	YOKE QR FOR 6 SERIES DRIVE SHAFT	2
4	S07187	YOKE PB FOR 6 SERIES DRIVE SHAFT (OPTIONAL)	2
5	S07207	CROSS FOR 6 SERIES	2
6	S01407	OUTER TUBE YOKE	1
7	S01404	ROLL PIN FOR 6 SERIES DRIVE SHAFT	2
8	S01406	OUTER TUBE DRIVE SHAFT 6 SERIES	1
9	S01405	INNER TUBE DRIVE SHAFT 6 SERIES_SAMPLE LENGTH	1
10	S01403	INNER TUBE YOKE	1
11	S07186	INNER COVER FOR 6 SERIES DRIVE SHAFT	1
12	S07197	DRIVE SHAFT ASSEMBLY COMPLETE	1

WIDE ANGLE DRIVE SHAFT FOR LCNT240 HYDRAULIC SLASHER



ITEM #	PART #	PART NAME	QTY.
1	S08210	QR YOKE TRACTOR END	1
2	S08208	UNIVERSAL JOINT	3
3	S08207	INNER TUBE YOKE	1
4	S08206	INNER TUBE	1
5	S08204	OUTER TUBE	1
6	S08205	OUTER TUBE YOKE	1
7	S08215	ROLL PIN FOR 6 SERIES DRIVE SHAFT	2
8	S08214	CENTRE ASSEMBLY JOINT FOR WIDE ANGLE DRIVE SHAFT	1
9	S08209	QR YOKE WIDE ANGLE END	1
10	S08213	WIDE ANGLE DRIVE SHAFT COVER ASSEMBLY	1
11	S08203	WIDE ANGLE DRIVE SHAFT COMPLETE ASSEMBLY	1

CUTTING HEAD ASSEMBLY FOR LCNT240 HYDRAULIC SLASHERS



ITEM NO.	PART #	PART NAME	QTY. OFF
1	S04051	CUTTING HEAD ADAPTOR	1
2	S04058	HEAD FLAT WITH ROUND HOLES 8MMX75MMX27"	1
3	S04059	HEAD FLAT SPACER 8MMX75MMX19 5/8"	2
4	S04091	BLADE RH SELF SHARPEN SUCTION LIFT 3"X14" X 16MM (ADVISE DIRECTION)	2
5	S04090	BLADE LH SELF SHARPEN SUCTION LIFT 3"X14" X 16MM (ADVISE DIRECTION)	2
6	S05069	BLADE BUSH	2
7	S02112	HEAD FLAT WITH SQUARE HOLES 10MMX75MMX27"	1
8	S04060	CUTTING HEAD RETAINER PLATE	1
9	S02115	DOME HEAD BOLT 3/4"UNC	2
10	S05067	HEX NUT 3/4" UNC	2
11	S04066	HEX BOLT 3/4"UNF 3 1/2" LONG	2
12	S04067	HEX NUT 3/4" UNF	2
13	S05517-1	CUTTING HEAD ASSEMBLY COMPLETE (EXCLUDING ITEM NO.1)	1

LCNT240 HYDRAULIC SHIFT
SLASHERS

WARRANTY

Your Superior Product is covered by **Manufacturers Warranty of 180 days** against faulty parts and or workmanship. Warranty does not cover operator abuse, or damage to the cutting head assembly (head flats, blades etc.) Should a warranty type problem develop with your new Mower **contact your local dealer** who will refer the problem to SUPERIOR EQUIPMENT. Items for any warranty inspection must be **forwarded on a pre-paid basis. Goods supplied are on a charge basis, subject to warranty inspection.**

(See page 1 for Corporate Philosophy / Warranty / Liability)

OWNERS NOTES

Model:	Serial No.
---------------	-------------------

LUBRICATION DATES	

-

SPARE PARTS REFERENCES	